

Symposium on Home and Community-Based Care

☰ SECTION MENU



6th Annual Symposium on Home and Community Based Care:

Emerging Issues in Home and Community Based Care Settings in 2023: Getting Care and Staying Alive

APRIL 17, 2023

8:30 a.m. - 3:30 p.m.

University of Maryland, Baltimore
Southern Management Corporation Campus Center
621 W. Lombard St., Baltimore, MD 21201




6th Annual Symposium on Home and Community-Based Care:



Emerging Issues in Home and Community-Based Care Settings in 2023:
Getting Care and Staying Alive



Monday, April 17, 2023

8:30 a.m. - 3:30 p.m.

Time	Content
8 - 8:45 a.m.	Continental Breakfast and Registration Check-in
8:45 - 9 a.m.	Greetings and Welcome Marik Moen, PhD, MPH, RN Assistant Professor, University of Maryland School of Nursing Jane M. Kirschling, PhD, RN, FAAN The Bill and Joanne Conway Dean of the University of Maryland School of Nursing

Time	Content
9 - 9:15 a.m.	<p>Opening of Symposium: Leadership in Care for Older Adults in Home and Community</p> <p>Aileen McShea Tinney, MHS, MA President and CEO, Keswick</p>
9:15 - 9:45 a.m.	<p>National Perspective: Opportunities and Challenges in Federal and State Policy Across Home/Community Care Service Delivery and Payment </p> <p>Erica Reaves, DrPH, MPP Senior Consultant Health Management Associates</p> <p>Aaron Tripp, MSW Principal Health Management Associates</p>
9:45 - 10:00 a.m.	<p>Interactive Question and Answer Session I</p>
10:00 - 10:25 a.m.	<p>State Perspective: Maryland Medical Assistance - Medicare “Dual Eligible” Eligibility and Approval Process; Medicare Savings Programs </p> <p>Taavon Brown Manager, Medicare Buy-In Programs Office of Eligibility Services Maryland Department of Health</p>
10:25 - 10:40 a.m.	<p>Interactive Question and Answer Session II</p>
10:40 - 10:55 a.m.	<p>Break (All posters must be set up by 10:55 a.m.)</p>
10:55 a.m. - 11:15 p.m.	<p>Local Perspective: Navigating the Constellation of Programs: Waivers, Adult Evaluation and Review Services, Maryland Access Point </p> <p>Byron Pugh, MPH Assistant Commissioner, Bureau of Home and Community-Based Services Division of Aging and Care Services, Baltimore City Health Department</p>
11:15 - 11:30 a.m.	<p>Interactive Question and Answer Session III</p>

Time	Content
11:30 p.m.-noon	<p>Innovative Programs in Home Care Support</p> <p>Aileen McShea Tinney, MHS, MA President and CEO Keswick West Baltimore Program of All-Inclusive Care for the Elderly (PACE®)</p> <p>Amanda Young Wesley at Home</p> <p>Audience Innovations</p>
noon - 1:15 p.m.	Lunch and Poster Session
1:15 - 2:30 p.m.	Interactive Case Study (Small Groups)
2:30 - 3:30 p.m.	<p>Prevention and Management: Substance Use in Home and Community-Based Services Settings (Overdose Response, Withdrawal, Referral to Treatment)</p> <p>Sarah Kattakuzhy, MD, MPH </p> <p>Associate Professor, Institute of Human Virology University of Maryland School of Medicine</p> <p>Aaron Greenblatt, MD </p> <p>Maryland Addiction Consultation Service, University of Maryland School of Medicine</p>
3:30 - 3:45 p.m.	Poster Presentation
3:45 - 4 p.m.	<p>Closing Remarks and Evaluation</p> <p>Marik Moen, PhD, MPH, RN Assistant Professor, University of Maryland School of Nursing</p>

Title	Author(s)
Cost-effectiveness Analysis of a Worksite Wellness Program for Reducing Cardiovascular Disease Risk Among Long-Term Care Workers 	Amylee Anyoha, MSPH; Lauren Anderson, CNA; Dajah White-Dumpson, BS; Kelly Doran, PhD, RN, FAAN; Barbara Resnick, PhD, CRNP, FAAN, FAANP; and Shijun Zhu, PhD, DrE
Exploring Patient Interest in Portal Use and Barriers to Access in Behavioral Health 	Maiya Bazel, RN, and Marik Moen, PhD, MPH, RN

Title	Author(s)
Factors Associated with a Reduction in Modifiable Risk Factors, with a Focus on Physical Activity, Healthy Diet, and Sleep among Long-Term Care Workers Diagnosed with Diabetes	Abaneh Ebangwese, BSN, RN; Kelly Doran, PhD, RN, FAAN; Barbara Resnick, PhD, RN, CRNP, FAAN, FAANP; and Shijun Zhu, PhD, DrE
Implementing Mobile Text Messaging to Improve Well Visit Rates in Early Head Start Programs	Martine Kirwin, MS, RN; Kelsey McGinty, DNP, APRN, FNP-C, RN, CPHQ, CPPS; and Meagan Clemence, MS
Implementing the “Core 5” Screening Tool in Early Childhood Education Settings	Martine Kirwin, MS, RN; Amy Nahley, MS, RN, OCN; Laura Allen, MA, MS, RN; and Briah Lynch, MS, RN
Initiating a Research Advisory Committee in a Substance Use Treatment Center and Launching the PURPLE Project	Marik Moen, PhD, MPH, RN; Kate Storm, BS, BFA; Wendy Potts, MS; Heather Fitzsimmons, MS; Aaron Greenblatt, MD; Max Spaderna, MD; Sarah Dunston-Lee; Sandy Ford; Rosalind Haines-Jones; Christina McCardle, AS, RN; Diana Surland; Anthony Walker; Donald Young; and Sarah Kattakuzhy, MD, MPH
Innovative Pathways to Health Equity: The West Baltimore RICH Collaborative	Yolanda Ogbolu, PhD, CRNP-Neonatal, FNAP, FAAN; Janette North-Kabore, MPH; Asunta Johnson, BS, MSHCM; Kelly Doran, PhD, RN, FAAN; and Shannon Idzik, DNP, CRNP, FAAN, FAANP
Lessons Learned from Community-based Collaboration to Explore Factors for Sustaining Recovery Among Parenting Women with Opioid Addiction	Doris Titus-Glover, PhD, RN; George Unick, PhD, MSW; Jocelyn Gainers, EdD, CAC-AD, CEBL; and Somadinauwa Ezekwu, BSN, RN
Stressors of Long-Term Care Facility Nursing Assistants During the COVID-19 Pandemic Utilizing Ecological Momentary Assessment, Wearable Sensors, and End-of-Day Reconstruction	Susanna Witmer, BSN, RN, PCCN; Kelly Doran, PhD, RN, FAAN; K. Lira Yoon, PhD; Ethan Fischer, BS; Abaneh Ebangwese, BSN, RN; Shifali Sharma, MS; G.S. Charan Duggirala, BS; and LuJie Karen Chen, PhD
The Community and Public Health Environmental Initiative: Bringing Nursing Services to Early Childhood Education Programs in Maryland	Robyn Gildea, PhD, RN; Amy Nahley, MS, RN, OCN; Laura Allen, MA, MS, RN; and Katie McElroy, PhD, RN
The Rebuild, Overcome, and Rise Center: Supporting Survivors in Baltimore City	Ella Hestand, BSN, RN; Laurel Smith-Raut, LMSW; and Monifa Jeffrey-Riggins, LCSW-C

Taavon Brown

Taavon Brown is the manager of the Medicare Buy-In Program for Maryland Medicaid. He has 28 years of service with the state of Maryland. Brown has served in many positions within the Maryland Department of Health. He

and his staff assure the payments and services of 189,041 dual-eligible Medicare and Medicaid beneficiaries.

Aaron Greenblatt, MD

Aaron Greenblatt, MD, is the medical director of the University of Maryland Medical Center Addiction Treatment Program and an assistant professor of Family and Community Medicine and Psychiatry at the University of Maryland School of Medicine. His clinical focuses are primary care, addiction, substance use disorders, opioid use disorder, reverse colocation, family medicine, and smoking cessation. Greenblatt also introduces students to these topics and populations. He serves as a consultant for the Maryland Addiction Consultation Service.



Sarah Kattakuzhy, MD, MPH

Sarah Kattakuzhy, MD, MPH, is a clinician-investigator, internal and addiction medicine-trained physician, and associate professor in the departments of Medicine and Psychiatry at UMSOM. She co-directs the Research Initiative in Infectious Diseases and Substance Use at the Institute of Human Virology, where her work is focused on implementation science and education to improve the substance use disorder care continuum.

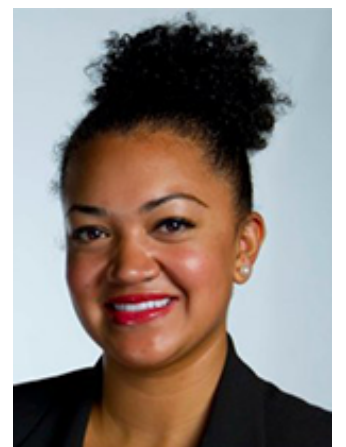


Byron Pugh

Byron Pugh, MPH, is the Baltimore City Health Department assistant commissioner for the Bureau of Home and Community-Based Services. He provides oversight of the Adult Evaluation and Review Services, Community Personal Assistance Services, and Home and Community-Based Options Waiver management team. He has more than 25 years of public health experience in health system administration, including with the District of Columbia, the Maryland Department of Health, and the U.S. Department of Health and Human Services.

Erica Reeves

Erica Reeves, DrPH, MPP, Senior Consultant Health Management Associates. She is a public health practitioner who has collaborated with beneficiaries, advocates, researchers, policymakers, and providers to promote person-centered care options for seniors and addressing the structural drivers of health inequities. people with disabilities, and family caregivers. She has provided policy analysis, implementation support, and program evaluation for Medicaid programs in multiple states as well as long-term services and supports (LTSS) reports for legislative, research, and media audiences. She served as a program manager with the MassHealth (Massachusetts Medicaid) Payment and Care Delivery Innovation Unit.



Aileen McShea Tinney

Aileen McShea Tinney, MHS, MA, President and CEO, leading the organization's strategic development process. Tinney also serves as the immediate past board chair of LeadingAge Maryland which supports nonprofit organizations to expand the world of possibilities for aging. She has dedicated her career to the design and delivery of logical and dignified health and housing options for older people. She has 25 years of experience in

operations and business development in affordable senior living, health care, post-acute and long-term care, community health and aging services.



Aaron Tripp

Aaron Tripp, MSW, Principal, Health Management Associates. He is a social scientist who has partnered with private organizations, government agencies, and policymakers to improve programs and policies as well as focusing on Medicaid, Medicare, and programs designed for the aging. He served in leadership positions with LeadingAge, including providing strategic leadership for payment policy, long term services and supports (LTSS), aging services, and emerging models of health care service delivery. His recent work includes Medicare post-acute care payment reforms, their impact on health care providers and related effects for state Medicaid programs.



Nurses

Nurses may receive up to 5.0 contact hours upon successful completion of this continuing nursing education (CE) activity. Successful completion is demonstrated by attending the entire activity and completing the activity evaluation. All requests for CE must be received within 30 days of the conference.

The University of Maryland School of Nursing is accredited as a provider of continuing nursing education by the American Nurses Credentialing Center's Commission on Accreditation.



Social Worker

The University of Maryland School of Social Work Office of Continuing Professional Education is authorized by the Board of Social Work Examiners in Maryland to sponsor social work continuing education programs and maintains full responsibility for this program. **We are also approved to offer CE to Licensed Counselor and Psychologists.** This training qualifies for up to 5 Category 1 Continuing Education Units (CEUs). Successful completion of this activity requires your **signature on the sign-in sheet**, participation in the entire activity, **Signature on the sign out sheet** and completion of an evaluation form. If you have any questions, please email us at cpe@ssw.umaryland.edu. We will not honor any certificate requests after one month from the date of the program.

Visit: [Social Work Continuing Education](#)

Overview:

Millions of people who need in-home care cannot afford to pay for it. In addition to costs, confusing eligibility processes and delayed service are barriers to receiving care. Health care personnel need to know facts and resources for payment and services for populations in home, facility, and community settings.

Additionally, 12 million people over the age of 60 and many other people in home or community-based care have substance use disorders. Health care personnel need to know evidence-based strategies for substance use prevention and management in these settings.

This one-day conference will highlight emerging trends in home and community-based care. Participants will learn from local, state, and national experts on topics such as Medicare Advantage, dual eligibility, and eligibility pathways for home-based care, including Medicaid waiver options. They will also learn from substance use disorder experts about prevention and management of overdoses, medication assisted treatment, and withdrawal, and public health implications of substance use in home and community-based settings.

Objectives:

- To explore multilevel resources for services and payments for home and community-based care services
- To gain knowledge and skills for prevention and management of substance use issues and connections to care for people in home and community-based settings

Key audience:

Professionals caring for those who are homebound, unhoused, in skilled nursing and long-term care, aging in place, and those with disabilities or multiple complex health conditions.

Committee Chair:

[Marik Moen, PhD, MPH, RN](#)

Assistant Professor
University of Maryland School of Nursing

Members:

[Laura Allen, MA, MS, RN](#)

Program Director, Community and Public Health Environmental Initiative
Family and Community Health
University of Maryland School of Nursing

[Amylee Anyoha, MSPH](#)

Health Services Research PhD Student
University of Maryland School of Public Health

[Megan Doede, PhD, RN](#)

Assistant Professor
Family and Community Health
University of Maryland School of Nursing

[Kelly Doran, PhD, RN, FAAN](#)

Associate Professor
Family and Community Health
University of Maryland School of Nursing

[Abaneh Ebangwese](#)

PhD student
University of Maryland School of Nursing

[Ella Hestand, RN-BSN](#)

Nurse Care Manager
Rebuild, Overcome and Rise Center (ROAR)
University of Maryland School of Law

Brooke Paluzzi
Director of Communications, Development & External Relations
Keswick

[Sonia Smith, BS](#)

Senior Program Specialist
University of Maryland School of Nursing
Office of Professional Education

Continuing Education (CE) Opportunities

UMSON offers year-round opportunities for continuing education, which is now recognized for license renewal in Maryland. Take advantage of [online, simulation, and in-person activities](#) to enhance your professional development.

Opening Session Sponsors:



Elizabeth Cooney Care Network

Student Scholarships Sponsors:



AHC Greater Baltimore, Inc.

Breakfast Sponsors:



Lunch Sponsors:

