

Call to Action for Continuum of Care in Foreign-Born Populations

Odera Ekwunife, MPH, PharmD Candidate

Department of Pharmaceutical Health Services Research University of Maryland School of Pharmacy, Baltimore, Maryland

Background

- Continuity of care post-discharge allows for a seamless transition between the inpatient care that was received and any post-discharge care such as filling prescriptions and visiting a primary care physician
- The literature to date on continuity of care has not focused on foreign-born populations who can be at risk of poor transitions following an inpatient stay
- There is limited information regarding the factors that represent barriers to a successful transition from hospital to home

Objectives

The study objectives were to:

- Explore perspectives on the barriers to adequate post-discharge transitional care among foreign-born patients
- Identify ways to improve the quality of the transition from hospital to home

Methods

Study Design

- A descriptive research study was administered to identify barriers to successful post-discharge care transitions in foreign born populations
- Our team conducted in-depth key informant interviews (KIIs) with providers who self-identified as knowledgeable about inpatient and post-discharge care for foreign-born individuals
- The KIIs explored barriers to adequate post-discharge, identified reasons for hospital readmission, and asked about approaches to improve the quality of the transition from hospital to home among FB patients
- A preliminary coding of the interview data was conducted to report results to date

Conclusions

- It is recommended to identify the variations in continuum of care based on the diverse nature of patients accessing healthcare in today's society
- The foreign-born population is an omitted demographic who face modifiable barriers to adequate post-discharge transitional care
- Health care providers with specific foreign-born patient populations equipped with an understanding of these factors will undoubtedly be in a better position to provide quality healthcare
- The findings from this study ultimately identify areas for further exploration in qualitative and quantitative inclusive research for patients and healthcare providers

Results

Table 1: Sociodemographic Characteristics of Key Informant Interviewers

Characteristic	N (%)
Race/Ethnicity	
African	3 (75%)
Caucasian American	1 (25%)
Gender	
Male	3 (75%)
Female	1 (25%)
Practice Setting	
Hospitalist	2 (50%)
Emergency Room	1 (25%)
Family Medicine	1 (25%)

Figure 1: Factors Associated With Readmission in Foreign Born Populations

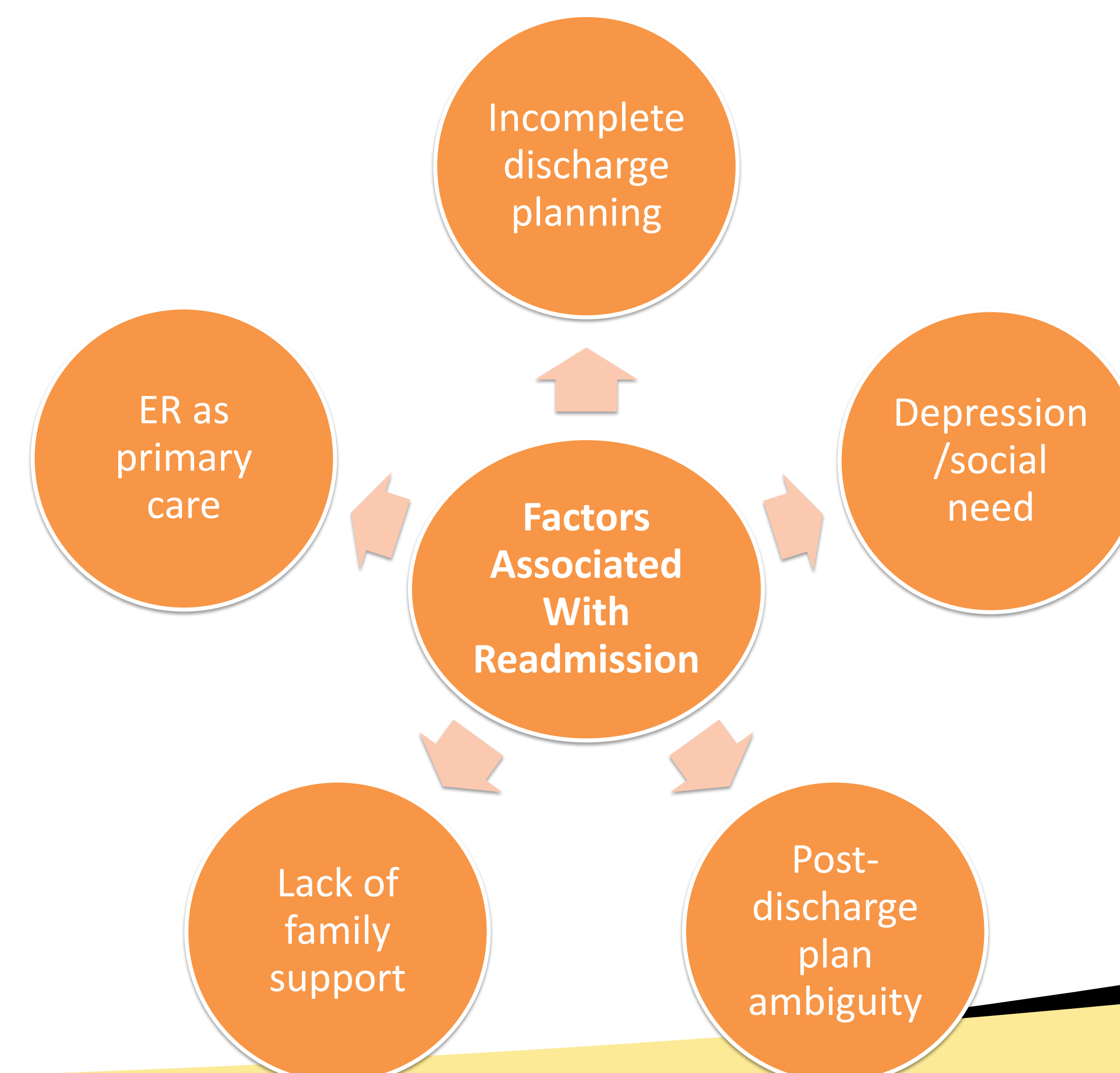


Figure 2: Structural and Cultural Barriers to Successful Care Transitions

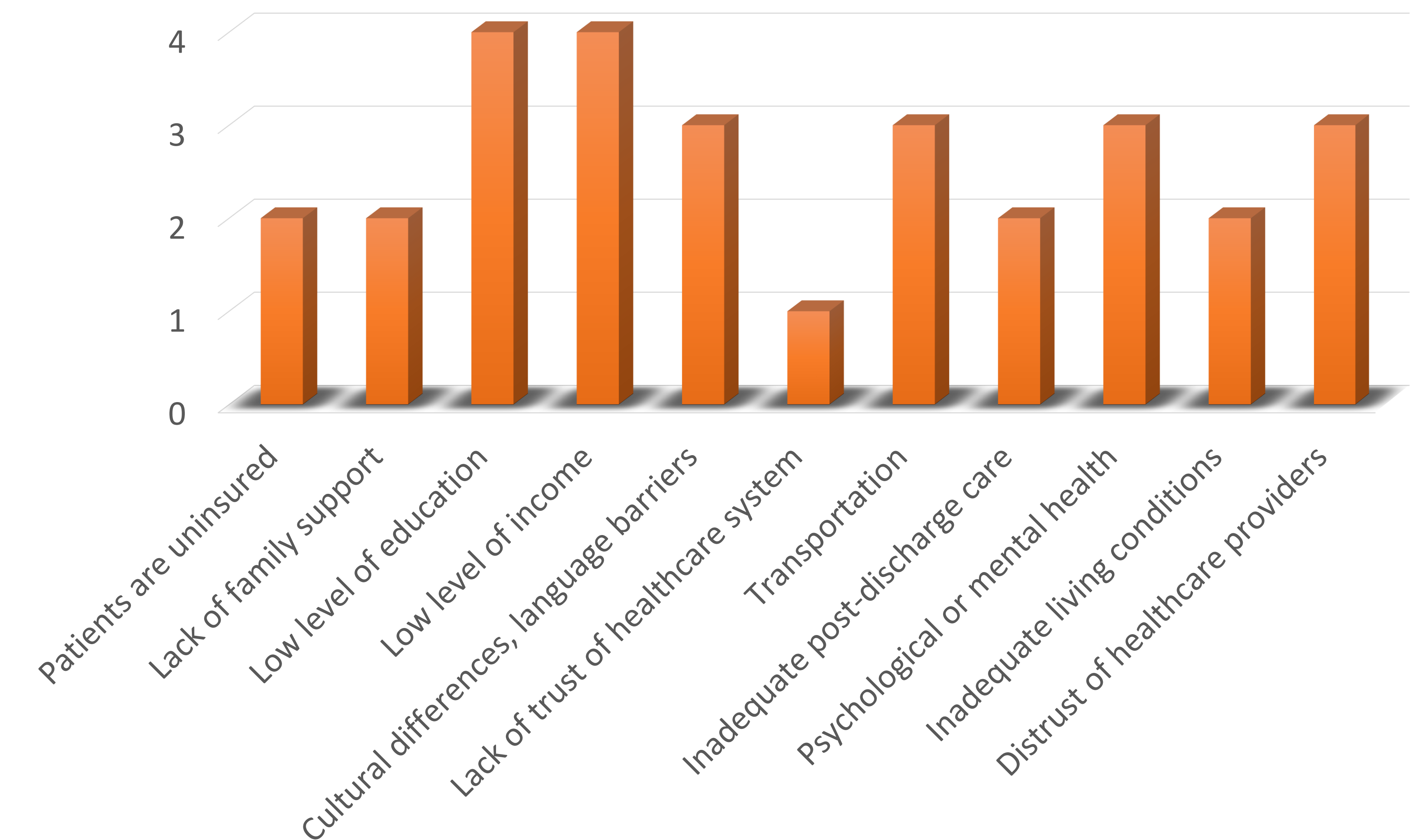
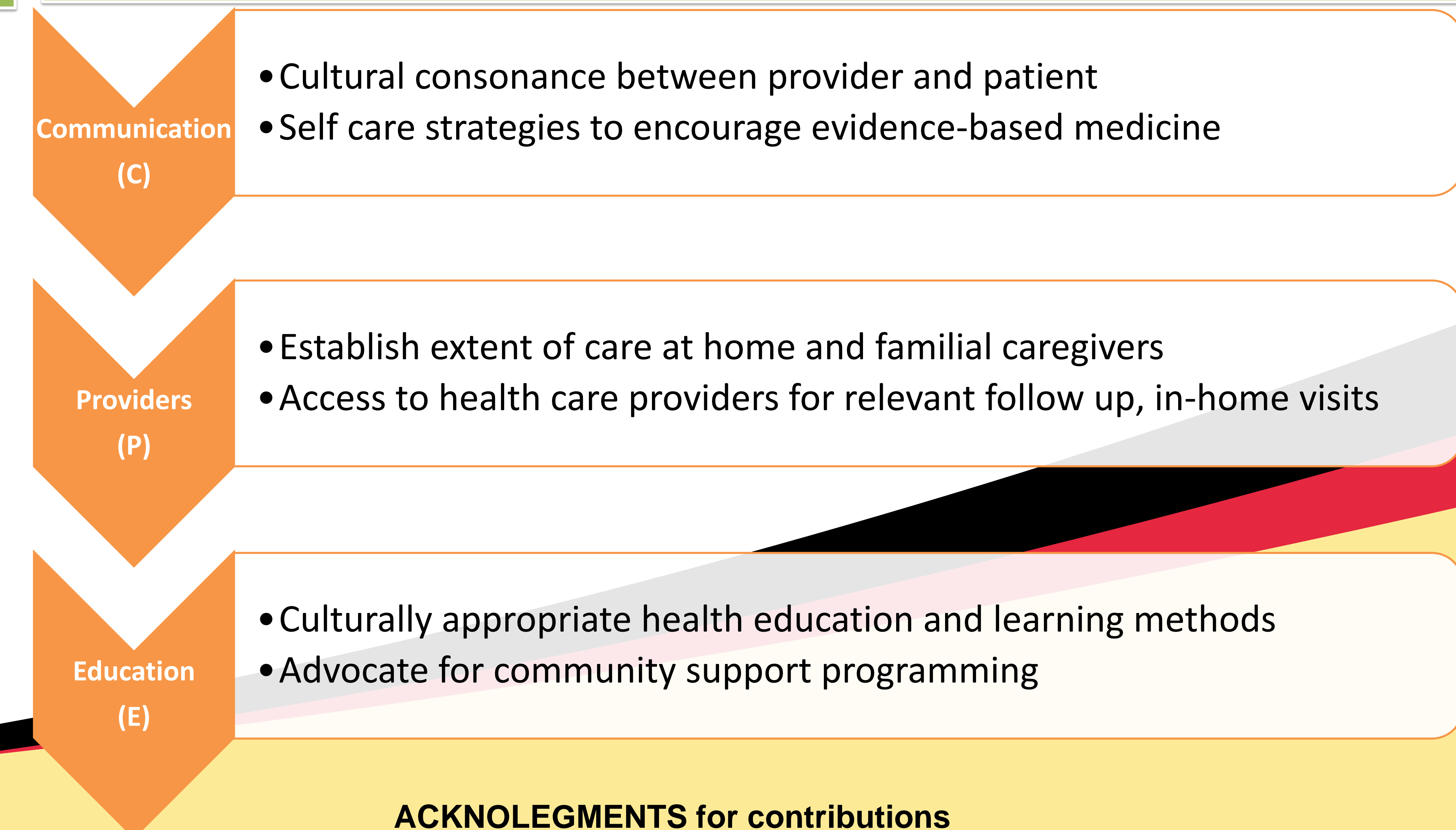


Figure 3: CPE Model: Recommendations to Improve Post-Discharge Care



ACKNOLEGMENTS for contributions
Poster summarizes interview data conducted by dr o at PGHC with collaborative feedback by dr botwe – dr o, dr botwe