

Connections

University of Maryland
School of Social Work

A Magazine for Alumni & Friends of the School of Social Work

Summer 2010



Connecting with the Peace Corps



UMB and the School of Social Work have turned a corner and are moving rapidly into a new era. The last 15 years have been years of significant stability and building, here, under the artful and entrepreneurial leadership of President David Ramsay. I am delighted that pediatrician and scholar, Jay Perman, MD has now assumed the leadership of UMB (see story within) and will continue the intense commitment to the growth of our expertise and resources on this campus and a special love for interprofessional education. This interest is a great platform for expanding our work at the School of Social Work because we are already deeply involved in a number of initiatives with colleagues in other professional schools and will soon have a role in President Perman's new "President's Clinic."

Dr. Perman builds on the work of recent years to ensure that UMB is engaged in "real world research and worldwide reach" and that we set our gaze well beyond the campus boundaries to the local community and on to international venues. The School of Social Work has been deeply involved in international responses and in developing international initiatives to broaden the horizons of our students. Much of this is informed by the experiences of the many former Peace Corps volunteers who grace our student body and faculty; some of their stories are central to this issue of *Connections*.

This *Connections* is also rich with stories of new initiatives and faculty and student advances. These efforts are changing the composition of the School by continuing to add top flight practitioners and scholars to complement our faculty. We are, in turn further

expanding our capacity to respond to the array of often fast breaking new offerings bursting from the Obama's administration's new domestic program initiatives.

One of the emerging foci is the prevention and reduction of obesity which is also a keen interest of President Perman's. Along with a growth of efforts to develop community schools and boost educational achievements of local students, a new focus on reducing unwanted pregnancies and sexually transmitted diseases, development of financial supports for struggling families, and a commitment to primary and preventive health and mental health care. Extramural support for research and training at the School has grown markedly—by nearly 50%—in the last 4 years and I expect that a substantial proportion of the future growth will be in these areas.

We continue to develop our capacity to make a difference in West Baltimore, with the Promise Heights Initiative, around the US (we have recently begun projects in Camden, New Jersey and Colorado Springs, CO), and around the world. Our teaching remains strong (see story on the Regent's Award to Geoff Greif) and our large and diverse entering class is increasingly from strong academic programs. For many reasons the continued growth of the School is bounded but the growth in quality of what we achieve is unlimited. I hope that you will enjoy the snapshot of these activities offered in these pages and offer my thanks to all of you who help us in our endeavors.

With warm regards,

Richard P. Barth, PhD, MSW
Dean and Professor

Inside Connections

A Magazine for Alumni & Friends of the School of Social Work

10



- page **2** **School News**
New faculty members; Employee Awards; New Social Work Academy; UMB Welcomes New President Jay A. Perman, MD.
- page **8** **Faculty Profile**
Raju Varghese:
A groundbreaker in international social work at the School.
- page **9** **Student Profile**
Inspired by Jane Goodall, Sara Montag looks to take her social work skills to new levels.
- page **10** **Connecting with Peace Corps**
Students, alumni, faculty, and staff are making a world of difference.
- page **17** **Donor Profile**
Writer, editor, media junkie, and recovering journalist are all words to describe School supporter Jane Brown.
- page **18** **Alumni News**
Alumni Scholarship winners announced and alumnae Sue Wolman establishes matching gift opportunity.
- page **19** **Class Notes**
Read the latest news from your classmates.
- page **24** **Alumni Profile**
Darnell Morris-Compton, MSW '07 is a former Peace Corps volunteer whose experience changed his career path.

Connections is published twice each year by the University of Maryland School of Social Work. Send comments to:

**University of Maryland
School of Social Work**
Alumni Affairs Office
525 W. Redwood St.
Baltimore, MD 21201

E-mail us at:
alumni@ssw.umaryland.edu

Editor:
Matthew O. Conn

Assistant:
Rennette Cowan

Contributing Writer:
Patricia Fanning

Connections School News

Three Join the Faculty



Kantahyane Whitt Murray, PhD (above left) has joined the School of Social Work as a Research Assistant Professor. Dr. Murray has a PhD from the University of Maryland, College Park School of Public Health and a MA in Policy Studies from The Johns Hopkins University. In addition, Dr. Murray has participated in a post-doctoral fellowship in general academic pediatrics at the School of Medicine, The Johns Hopkins University.

As a pre-doctoral fellow at the National Institute of Child Health and Human Development, Dr. Murray coordinated various components of the Steppin' Up Project, a mixed-methods youth violence prevention study in Baltimore City. Dr. Murray used data from this study to complete her dissertation, "Aggression and Perceptions of Parenting among Urban Public Middle School Students." She also led a team that conducted 44 home visit interviews with East Baltimore parents. Results of her mentored and independent research have been presented at national scientific conferences, including the American Public Health Association, the Society for Research on Child Development, and the International Society for Urban Health.

Murray will initially be assigned to lead evaluation activities for a project of the Family Tree and two new federal awards, one in collaboration with the Maryland Department of Human Resources and the other with ACTION for Child Protection. In addition, she will join a UMB team working with Casey Family Services (an arm of the Annie E. Casey Foundation) on a Parent Child Foster Care (PCFC) Implementation Evaluation that will study a unique program to provide quality foster care and family-linking services to pregnant and parenting foster youth.

Susan Roll, PhD, (above center) has joined the School as an Assistant Professor. Dr. Roll earned her PhD from the University of Denver and her MSW from Arizona State University. Her expertise and research interests include social welfare policy, urban poverty, neighborhood effects, and community organizing.

Roll has had several articles published in research journals. They are:

Brisson, D., Roll S. & East, J. (2009). Race and ethnicity as moderators of neighborhood bonding social capital: Testing the effects on employment outcomes for families living in low-income neighborhoods. *Families in Society* 90(4).

Brisson, D. & Roll, S. (2008). An adult education model of resident participation: Building community capacity and strengthening neighborhood-based activities in a comprehensive community initiative (CCI). *Advances in Social Work* 9(2).

Walls, N. E., Roll, S., Griffin, R., & Sprague, L. (In press). A model for teaching about privilege in graduate social work education. *Understanding & Dismantling Privilege Journal*.

Brisson, D. & Roll, S. (in press). The Effect of Neighborhood on Crime and Safety: A Review of the Evidence. *Journal of Evidence-Based Social Work*.

Roll, S., Passerella, V. & Miller-Mack, E. (2005). Organizing for Change. In J. Norsigian, H. Stephenson & K. Zeldes (Eds.), *Our Bodies, Ourselves: A New Edition for a New Era*. (pp. 748-758). Touchstone, New York, NY.

Michael Woolley, PhD, (above right) comes to the School of Social Work as an Associate Professor. Dr. Woolley completed his PhD at the University of North Carolina at Chapel Hill. He earned his MSW at Virginia Commonwealth University.

Woolley served previously as an Assistant Professor at the University of Chicago School of Social Service Administration. His research and teaching interests revolve around the provision of social work services in schools, the risk and protective social environmental factors impacting school success, interpersonal practice with children and families, and the construction and validation of self-report assessment instruments for children and adolescents. Dr. Woolley is both a member of the Academy of Certified Social Workers and a Diplomate in Clinical Social Work through the National Association of Social Workers.

Dr. Woolley has published numerous book chapters about school issues such as advancing the social climate in schools, reducing school violence, and the assessment of children in social work practice. He has also published numerous articles in journals such as *Family Relations*, *Children & Schools*, *Educational Psychologist*, *Educational and Psychological Measurement*, *Community Psychology*, and *Research on Social Work Practice*. He recently co-edited two special issues of the journal *Children & Schools* focused on social work assessment in schools.

Dr. Woolley is the principal investigator of an NIMH-funded research project applying cognitive methods to examine how adolescents interpret and respond to self-report assessment instruments. He also has been the principal investigator of funded research on how neighborhood social factors impact school outcomes.

Electronic Field Notebook Prompts Employee Awards



Wanda Bair (shown above) of the School of Social Work Field Education Office and Chris Raab of the University's Computer Information Technology Services Office were honored with Employee of the Month awards for their collaborative efforts and work in developing a Field Management System and Electronic Field Notebook.

The Field Management System employs a flexible database with easy data retrieval, storage and interactive capabilities. This enables the SSW Field Education faculty to electronically

refer students to agencies, and for agencies to make their dispositions online.

A secondary result of this database was the development of an Electronic Field Notebook (EFN) where students, their field instructors, and faculty liaisons can work together online to view students' assignments, give feedback, and complete evaluations.

The value-added benefits of the EFN have been: eliminating paper (and postage costs) for over 700 referrals and thousands of process recordings and evaluations each year, allowing for timely and efficient responses to problems, easy access to information and report data, and secure access from anywhere via the Internet. Educational benefits include history/ documentation of learning, easy and quick communication between the School and agencies, and the ability for faculty liaisons to provide timely supervision to their students—who are at times as far away as India.

Last November, Bair and Raab presented a hands-on live demo of the system to other academic institutions, social workers, and agencies at CSWE's (Council on Social Work Education) Annual Program Meeting in San Antonio.

ETO (Efforts to Outcomes) Measuring SWCOS' Impact

by Dr. Rebecca Sander, Clinical Research Specialist, SWCOS

This year SWCOS begins to capture the work done by student interns using ETO Software®. The software was developed by a local Baltimore company, Social Solutions Inc., and is used by a wide variety of nonprofits locally and nationally. Implementing the software requires that an agency go through an extensive internal examination of its mission, theories of change, activities, and (hoped for) impact or outcomes.

SWCOS staff began the implementation process in February 2009 and decided to focus on two aspects of its work this pilot year: student intern learning and community-building activities and outcomes. A workgroup was formed for each of these areas and worked through the summer to discuss what information to collect and how to measure the impact of the SWCOS field placement experience on both social work interns and the placement communities.

The implementation process will continue throughout this upcoming academic year. Initially data will need to be collected manually as Social Solutions custom designs the software for SWCOS this fall. Currently we are on-target to begin piloting the software in November. We anticipate that the software will vastly improve our ability to articulate the distinctive nature of SWCOS' work to the School of Social Work, the community, our alumni, and our funders. Once we fully implement the systematic collection of data over time, we can use this information to address cutting edge research questions about the impact of community-based social work in our neighborhoods and with our social work interns.

twitter™

Follow us on Twitter at:
twitter.com/mdsocialwork

School Hosts Unique Art Exhibit

In celebration of Social Work Month in March, the School of Social Work sponsored an art exhibit featuring works by the talented artists from Studio



In-Sight at St. Luke's House, Inc. (SLH). A reception honoring the artists (above center) was held at the School on March 8.

St. Luke's House has provided comprehensive psychiatric rehabilitation and treatment to clients in Montgomery County since 1971. Studio In-Sight is one component of SLH's Life Skills Program which offers independent living skills training and social



skills development.

The Studio In-Sight (SIS) program is dedicated to individuals who want to work as artists. SIS offers the artists a way to share their talents in a nurturing environment along with providing vocational opportunities in galleries and group shows in the community.

This show provided an opportunity for the UMB campus community and the general public to experience the best outcomes of this alternative program and expand the exposure of the Studio In-Sight clients by helping



to reduce stigma and support their goals. Along with the artwork, the show displayed a unique combination of featured artists' biographies

and their description of how this program has supported their rehabilitation.

The School of Social Work is pleased to acknowledge that two of its graduates direct the Studio In-Sight program. Eric Gordon and Elaine Byergo both earned their MSW degrees here--Gordon in 2008 and Byergo in 1998.

Did You Know?

The School of Social Work and the University of Maryland, Baltimore generate a tremendous amount of economic activity in Maryland. According to a survey by The Jacob France Institute, "Total University spending of \$1.2 billion generates nearly \$1.5 billion in Indirect Economic Impacts for a total impact on the Maryland economy of close to \$2.7 billion. Total direct University employment of 6,676 is augmented by an estimated 18,589 jobs supported or created through indirect impacts, for a total employment impact of 25,265 jobs. There is a total of nearly \$1.2 billion in salaries and wages associated with these 25,265 jobs."

The School of Social Work's output impact according to the survey was \$36.6 million in direct impact, \$107.4 million in indirect impact for a total economic impact \$144 million!

Perman Era Begins at UMB

Jay A. Perman, MD, took office as the new president of the University of Maryland, Baltimore (UMB) on July 1, 2010.

"I am highly honored to be the next president of the University of Maryland, Baltimore," said Perman, who was dean and vice president for clinical affairs at the University of Kentucky (UK) College of Medicine before returning to Baltimore. "Working with its faculty, staff, students, and alumni, I relish the opportunity to lead this important institution to even greater heights. The state of Maryland and UMB were my personal and professional home for many years. To come back in this role is a special privilege.

"At the same time, I take immense pride in all that we have accomplished at the University of Kentucky, its College of Medicine, and UK HealthCare over the past six years. The University of Kentucky is a special place in a special state. I cherish the opportunity I have had to be a part of the University's distinguished history and to have been a Kentuckian during these years."

UMB is the state's only public academic health, law, and human services university.

Since becoming dean at the UK College of Medicine in May 2004, Perman had overseen the recruitment of nearly 200 faculty members, a 40 percent increase in the number of science faculty and a 30 percent increase in clinical department faculty. Total all-source revenues had grown by \$150 million to \$500 million in the current fiscal year. Based on the most recent data, the UK College of Medicine had risen from 35th to 28th among public medical schools in total funding from the National Institutes of Health.

"I am delighted Dr. Perman has accepted the regents' appointment," said William E. Kirwan, chancellor of the University System of



Maryland. "His compelling accomplishments as an educator, administrator, and fundraiser at the University of Kentucky College of Medicine position him quite well for the presidency. We have found a national leader who will advance the University's excellence as a top research university."

Perman's appointment reflects a return to the UMB campus. In 1999, he was recruited to the University of Maryland School of Medicine and served as chair of pediatrics and as chief of pediatrics for the University of Maryland Medical System.

From 1996 to 1999, Perman was the Jessie Ball duPont Professor and Chairman in the Department of Pediatrics at Virginia Commonwealth University (VCU) Medical College of Virginia. Before his appointment at VCU, Perman was at the Johns Hopkins University School of Medicine for 12 years, serving as professor of pediatrics. From 1977 to 1984, he was an assistant professor and associate professor of pediatrics at the University of California, San Francisco.

Perman received a Doctor of Medicine

degree with Distinction in 1972 from Northwestern University in Chicago. Following his residency at Northwestern University Children's Memorial Hospital in 1975, he completed a fellowship in pediatric gastroenterology at Harvard Medical School and at the Children's Hospital Medical Center in Boston in 1977. He was named a *Baltimore* magazine Top 25 Pediatrician in 2003.

Perman succeeds UMB President David J. Ramsay, DM, DPhil, who had served in the position since 1994. "The University and the state of Maryland clearly benefited from David's visionary leadership during the institution's impressive growth since he became president 15 years ago," Kirwan said.

Dr. Perman has already become actively involved at the School. He has visited the School to meet with Dean Barth and other School leaders, attended a dinner to honor the extraordinary service of outgoing Capital Campaign Chairs Ed and Barbara Brody, and discussed with the School an obesity initiative and an interprofessional education clinic he will be starting this fall.

Faculty Honors

Richard P. Barth, PhD, MSW, dean and professor of the University of Maryland School of Social Work has been honored by the Society for Social Work and Research (SSWR) with its 2010 Distinguished Achievement Award.

Barth was recognized for decades of outstanding contributions. His “cumulative career accomplishments have set him apart from other leaders in social work research regarding the extent to which his contributions have advanced the state of the art of social work research and its utilization,” according to SSWR.

Barth has authored more than 180 peer-reviewed research papers and 13 books. His research articles have been cited more than 1,900 times, among the highest citation rates in social work. Before becoming dean of the School of Social Work, he held chaired professorships at the University of North Carolina and the University of California, Berkeley.

As a leader in children’s services research, Barth has served as principal investigator for more than 40 studies and was co-principal investigator for the first examination of the nation’s child welfare system that used a nationally representative sample. Congressionally mandated, the “National Study of Child and Adolescent Well-Being” was an important generator of research on the processes and outcomes of our response to child abuse and neglect and related services such as parent training, foster care and adoption.



The Society for Social Work and Research also selected Assistant Professor **Nalini Negi, PhD, MSW**, as the 2010 recipient of the Outstanding Dissertation Award

for “Protective and Risk Factors for Well-being Among Latino Day Laborers.”

A letter to Negi says that SSWR “recognizes the significance of the problem addressed in your research, the rigor of the analysis, and its contribution to knowledge

in social work and social welfare. The Society conveys the award with the expectation that you will continue to pursue excellence in research and knowledge development in social work.”

The awards were presented at the SSWR annual conference held in January.

School of Social Work Professor **Geoffrey Greif, DSW, MSW**, has been honored by the University System of Maryland with its prestigious 2010 Board of Regents’ Faculty Award for Teaching Excellence. This award is the highest honor the System bestows to recognize exemplary faculty achievement. Greif is among a group of four professors at University of Maryland System schools to be chosen.

“Dr. Greif has been internationally recognized for his research on men, group work as a practice method, and children who have experienced kidnapping,” says a System spokesperson who adds, “Through direct classroom instruction, mentoring, and research, Dr. Greif has shaped the lives and careers of thousands of social workers who graduated from UMB during his tenure.”

Recent Publications

Kolko, D. J., Hurlburt, M. S., Zhang, J. J., **Barth, R. P.**, Leslie, L. K., & Burns, B. J. (2010). Posttraumatic stress symptoms in children and adolescents referred for child welfare investigation: A national sample of in-home and out-of-home care. *Child Maltreatment*, 15, 48-63.

McCrae, J. S., Barth, R.P., & Guo, S. Y. (2010). Changes in maltreated children’s emotional-behavioral problems following typically provided mental health services. *American Journal of Orthopsychiatry*, 80, 350-361.

Postlethwait, A. W., **Barth, R. P.**, & Guo, S. Y. (2010). Gender variation in delinquent behavior changes of child welfare-involved youth. *Children and Youth Services Review*, 32, 318-324.

Dicianno, B. E., **Bellin, M. H.**, & Zabel, T. A. (2009). Spina bifida and mobility in the transition years. *American Journal of Physical Medicine & Rehabilitation*, 88, 1002-1006.

Bright, C. L. & Jonson-Reid, M. (2010). Young adult outcomes of juvenile court-involved girls. *Journal of Social Service Research*, 36(2), 94-106.



Dickinson, N.S., & Painter, J.S. (2009). Predictors of undesired turnover for child welfare workers. *Child Welfare*, 88(5), 187-208.

Greif, G. L. (2009). One Dozen Considerations When Working With Men in Substance Abuse Groups. *Journal of Psychoactive Drugs*, 41(4), 387-390.

Jacobson, J. and Jones, A. (2010). Standards for the EAP Profession: Isn’t it Time We All Start Speaking the Same Language? *Journal of Workplace Behavioral Health*, 25(1).

Lee, B. R. & **Lindsey, M. A.** (2010). North Carolina Family Assessment Scale (NCFAS): Measurement properties for youth mental health services. *Research on Social Work Practice*, 20, 202-211.

Hadjistavropoulos, T., Marchildon, G., Fine, P.G., Herr, K., **Palley, H.A.**, Kaasalainen, S., and Beland, F. (2009). Transforming Long-Term Care Pain Management in North America: The Policy-Clinical Interface. *Pain Medicine*, 10(3).



Sharpe, T.L. (shown here), **DePanfilis, D.**, **Strieder, F.**, and **Gregory, G.K.** (2009). Replication the Family Connections Program: Lessons Learned from

Grandparents. *Protecting Children*, 24(3), 58-68.

Shdaimah, Corey (2010). The law cannot terminate bloodlines: Families and child welfare decisions. *Children and Youth Services Review*, 32(5), 704-10.

In the Headlines



Research by School of Social Work Associate Professor **Dr. Michael Lindsey** that found social support among African-American boys may play an important role in

lowering depressive symptoms, particularly when these youth face stigma regarding mental illness was part of a story published by *Healthcanal.com*.

The *Frederick News-Post* in Maryland did a story on School of Social Work Visiting Professor and former Deputy Director of the Peace Corps **Jody Olsen** speaking to a group there on sharing ways to bridge cultural gaps drawn from her experiences abroad.

School of Social Work student **Judith Kuzmak** has created a local organization, Baltimore Do-Gooders, that promotes unity, diversity and activism. The group's one-year anniversary and their work in the community was the subject of a story in *Examiner.com*.

Sonja Sohn, who once played Detective Kima Greggs on the HBO series "The Wire", which ran for five seasons, is now doing real-life work with youngsters whose lives resembles the show's brutal and crime-ridden plotlines. There's now a core group of a dozen Rewired for Change participants, meeting twice a week in a small room at the University of Maryland School of Social Work. Her work, in conjunction with assistance from School of Social Work Assistant Professor **Dr. Tanya Sharpe** appeared in a story in *TrueSlant.com*.

A 2007 study by School of Social Work Associate Dean for Research and Professor **Dr. Diane DePanflis**, the National Foster Parent Association, and Children's Rights that looked at the rate states reimburse foster families was the subject of a news story in the *Idaho Statesman*. The story examined how Idaho ranks in the bottom five in compensation to foster care families.



AMERICAN ACADEMY OF SOCIAL WORK AND SOCIAL WELFARE

Social Work Leaders Establish Academy, Honor Two from UMB

By Patricia Fanning

The newly-established American Academy of Social Work and Social Welfare (AASWSW) has selected its first group of fellows, who were urged during their recent induction ceremonies to emulate the leadership and advisory roles of members of the National Academies. The AASWSW recognized 28 scholars and practitioners, including five board members, at an event held April 21 at the National Press Club in Washington, D.C.

Richard P. Barth, PhD, MSW, dean of the University of Maryland School of Social Work (SSW) and chair of the AASWSW board, called the establishment of the academy "a milestone for the profession." Selected as a fellow for his accomplishments, Barth was most recently honored by the Society for Social Work and Research with its 2010 Distinguished Achievement Award. Previously he was recognized as Researcher of the Year by the National Association of Social Workers (NASW) and as recipient of the Flynn Prize from the University of Southern California.

Jesse J. Harris, PhD, MSW, MA, a professor and dean emeritus of the School, was also among those chosen as fellows for achieving excellence in high-impact work that advances social good. "I am honored to have been selected," said Harris, who served as dean from 1991 until 2006.

He is a retired Army colonel who was chief of social workers for the Army Surgeon General and who now chairs a SSW task force on returning soldiers. Harris is the recipient of numerous awards including the Army Legion of Merit, the NASW Social Work Pioneer Certificate of Honor and the NASW Ruth Knee/Milton Wittman Lifetime Achievement Award in Health and Mental Health Practice.

"I am very happy that the profession has established an academy," he said. "I expect

it's going to make a tremendous contribution not only to the profession but to the country as well." Harris said members of the academy expect that policymakers will look to the fellows to address "major issues of our society."

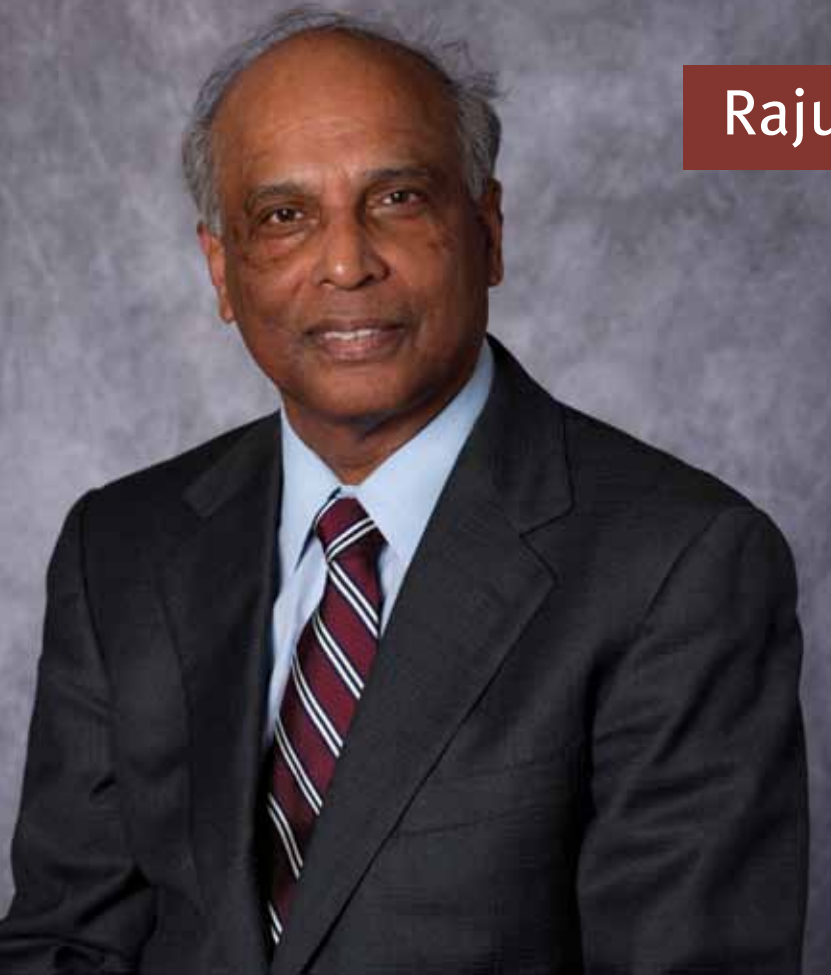
Presiding at the event were AASWSW founders, including Grover C. Gilmore, PhD, dean, Mandel School of Applied Social Sciences at Case Western Reserve University, and Barth, whose peers had chosen him to chair the Academy's board. The group was informed of federal health-care reform provisions by Sheldon Fields, PhD, RN, FNP-BC, a Robert Wood Johnson health policy fellow in the office of United States Senator Barbara A. Mikulski, Democrat of Maryland.

In emulating the scientific advisory role of the National Academies, Barth said, "We are building on a tradition." Yet the AASWSW also is seen as an innovation that offers "a substantial new opportunity to bring the best minds of researchers and best practices to bear in the redesign of social services and preventive and community-strengthening programs."

The purposes of the AASWSW are: to encourage and recognize outstanding research, scholarship, and practice that contribute to a sustainable, equitable, and just future; to inform social policy by serving as a frontline source of information for the social work profession as well as Congress and government agencies and entities charged with advancing the public good; to promote the examination of social policy and the application of research to test alternative policies, programs, and practices for their impact on society; and to celebrate excellence in social work and social welfare research, education, and practice.

To view a video of the event, please visit <http://bit.ly/csqzK7> or www.aaswsw.org.

Raju Varghese



It was the 1950s and growing up in Kerala, India as the oldest of three children, Raju Varghese was expected to join his father in the family's precision tool selling business when he finished college. But for Raju, now an associate professor at the School of Social Work, things would be different, much different.

Raju's younger brother decided to enter the family business and "I made the decision to explore my luck in a different field," says Raju. After earning an undergraduate degree in natural science from Kerala University, Raju moved to Madras, India where he worked part-time for his uncle and attended the Madras School of Social Work. Following his graduation in 1961, Raju returned home and worked for the family business for more than one year and in his words, "kept busy with community activities." One day, Raju was introduced to Rev. Fr. Francis Sales who was looking to establish the first school of social work in the entire Indian state of Kerala. "Fr. Sales invited me to teach a class on groups and offered me a faculty position," Raju explains. He adds, "During my tenure at the college, I had the opportunity to meet several of the social work professors from the United States. Among them was Dr. Ruby Pernell who talked to me about the need for furthering my education and recommended me for admission at University of Pennsylvania School of Social Work." So it was off to the United States.

Raju graduated from Penn in 1969 with a masters in social work degree and decided to pursue the PhD in social work from Temple University. "Temple convinced me of the linkage between social work and group dynamics and I felt that I found the niche I was looking for," explains Raju. While studying at Temple, Raju had a chance encounter with Dr. Daniel Thursz, then dean of the School of Social Work. Thursz was looking for people to come to UMB to teach groups and human behavior. So, in 1972, while still working on his PhD, Raju began teaching at the School of Social Work and has continued teaching here ever since.

While at UMB, Raju has not forgotten his ties to his homeland, his hometown, or Kerala. "All these years I have kept my relationship with Rajagiri College of Social Sciences in Kerala by providing curriculum consultation, supplying new books in the field, and also conducting faculty training whenever I visit. During one of my visits, Rajagiri proposed a student exchange program and we worked out a plan where Rajagiri students could finish their first year education in India and attend UMB for their second year and receive the MSW degree from UMB. I also developed a course on international social work that involves traveling to Kerala, India, attending classes at Rajagiri, interacting with Rajagiri MSW students, and visiting selected field agencies depending on the interests of students. We have also developed a program which offers second-year international field placement for UMB students."

For many decades, Raju Varghese has worked hard at bridging the boundaries of international education. His efforts to help connect the School of Social Work in Baltimore with his peers in Kerala, India, have created life-changing opportunities for students from each country. The efforts have also helped spawn a growing interest in expanding similar opportunities to other places around the globe.

Sara Montag



As a child, noted anthropologist Jane Goodall was given a chimpanzee toy by her father. This gift turned into a life-time love and study of primates and their social and family interactions. Such a commitment inspired current student Sara Montag, who calls Goodall her “hero.” Like, Goodall, Montag wanted more than anything growing up to travel to Africa. But first, she would have to get “out of Oregon.”

Montag grew up in the wonderful Pacific Northwest in Portland, Oregon. From there, she traveled to Minnesota to earn her bachelor’s degree in biology from Carleton College then she went on to fulfill her dream of travelling to Africa through a two-year commitment with the Peace Corps. “By the time I was graduating college,” said Montag, “I was just ready to dive into something head first. I thought how else will I get to go to Africa and really see what it’s all about? Some people say the two-year commitment is daunting, but I was ready for a big challenge, something I couldn’t back down from.”

Montag was assigned to Tanzania from 2001 to 2003. “I lived in a small rural village called Ihomasa and worked with farmers on projects to help improve their livelihoods

while conserving natural resources,” Montag explained. She was able to put her biology background to work with the Tanzanian people through environmental education efforts. “I worked with a group of farmers who wanted to try keeping milk goats, which can be more sustainable than cows in that environment. So we invited a livestock expert to come give sessions on planting fodder and building pens, and eventually raised enough money to buy some goats. Since firewood is the main cooking fuel, I worked with a women’s group to build fuel-efficient stoves that used less wood.”

Montag’s experience in the Peace Corps fostered in her a desire to come back to America and continue helping people. “During my two years in Tanzania, my heart was constantly pulled and stretched by people’s needs that I was unable to meet. The interconnecting social factors that influenced each person’s well-being – poverty, HIV, domestic violence and gender inequality – were so complex, and I thought a social work education could help me start figuring out how to help.” She added, “When I did come back home and worked in the non-profit sector for a while, I also saw the practical side of things, that an MSW is a versatile degree that can open the door to work in many

different types of jobs.”

The Peace Corps Fellows Program at the School of Social Work appealed greatly to Montag. “It was a chance to go to school with other students who have shared the experience of being in the Peace Corps, and work with an advisor who understands what the Peace Corps is all about.”

Montag has selected the Management and Community Organization concentration here at the School and specializes in Social Action and Community Development. Montag explained her choices stem from her Peace Corps experience, “I found that my mind just thinks in social justice and community terms after my experience. When I see an individual, I immediately think of how he is affected by the larger society, the structural barriers he might face, and I really hold on to the belief that solutions to social problems have to come from the community members themselves.”

When Montag graduates from the School she plans on moving to Colorado. She spent a summer there recently working for a county health and human services department and really enjoyed the experience and the area. Maryland’s loss will certainly be Colorado’s gain.



Since 1961, the Peace Corps has shared with the world America's most precious resource – its people. Peace Corps Volunteers serve in 77 countries in Africa, Asia, the Caribbean, Central and South America, Europe, and the Middle East. Collaborating with local community members, Volunteers work in areas like education, youth outreach and community development, the environment, and information technology.

Coming from all walks of life and representing the rich diversity of the American people, Volunteers range in age from college students to retirees. Every Peace Corps

Volunteer's experience is different. From teaching English to elementary school children in Zambia to launching a computer learning center in Moldova to promoting HIV/AIDS awareness in South Africa to working on soil conservation in Panama, Volunteers bring their skills and life experiences to where they are needed most.

The Peace Corps traces its roots to when then Senator John F. Kennedy challenged students at the University of Michigan to serve their country in the cause of peace by living and working in developing countries. From that inspiration grew a federal

agency devoted to world peace and friendship.

Today's Peace Corps is more vital than ever, working in emerging and essential areas such as information technology and business development, and committing more than 1,000 new Volunteers as a part of the President's Emergency Plan for AIDS Relief. Peace Corps Volunteers continue to help countless individuals who want to build a better life for themselves, their children, and their communities.

(Portions above reprinted from the Peace Corps Web Site, www.peacecorps.gov.)

Connecting with the Peace Corps

Students, Alumni, Faculty, and Staff Make a World of Difference

The Peace Corps and the University of Maryland School of Social Work share the same birth year--1961. They also share similar values, people, and even a program for master's level students.

The School of Social Work has a proud and rich tradition of former Peace Corps volunteers coming to the School to pursue their graduate degree in social work. These masters level and doctoral graduates go on to begin or continue their careers well prepared to handle the social work profession's toughest challenges.

Their mix of Peace Corps experiences and social work education creates a unique

combination of skills that help set them apart in many distinguishing ways.

The School of Social Work is building on its history of international collaborations by actively pursuing new and enhanced relationships with the Peace Corps, its volunteers, and others in the international community. These efforts include taking part in new partnerships with the Peace Corps through its Master's International program; the hiring at the School of former Peace Corps Deputy Director and alumna Jody Olsen to reinvigorate our international efforts; the encouragement of new and demanding international learning and field placement

experiences for students in India, El Salvador, and elsewhere around the globe; more scholarship opportunities for incoming students who bring with them valuable international learning experiences; and tapping into our extensive alumni network to explore additional opportunities to expand our reach and provide our students with the best possible educational experiences.

The stories that follow touch on many of the areas mentioned above and wrap up with as a list of returning Peace Corps Volunteers among our alumni, faculty, staff, and students and where and when they served.



Improving the School's Presence Internationally Starts With the Right People

Jody Olsen, PhD, MSW '72, who most recently served as acting director of the Peace Corps, has joined the School of Social Work as a visiting professor. She had been deputy director of the Peace Corps for the previous seven years after having begun her distinguished international career in 1966 as a volunteer in Tunisia.

Olsen's responsibilities are "to assist in the development of international programs, public service initiatives, and to contribute to the teaching of management, international social work, and community practice courses as a resource and occasional lecturer," says Richard P. Barth, PhD, MSW, dean of the School.

Barth designated Olsen as coordinator of the School's response to the Haiti earthquake, which occurred only days before she arrived on campus for the spring semester. She collaborated with other University leaders in overseeing the School's outreach efforts, starting with

the Haitian community in the Baltimore-Washington area. "This is the beginning of what can be a long reconstruction effort that will enrich our work here at the School and give desperately needed assistance to the people of Haiti, whether in their own country or here in our metropolitan neighborhoods," says Olsen.

Among her first accomplishments in her new position, Olsen joined Dick Cook, MSW, director of the School's Social Work Community Outreach Service, in leading a group of 15 students to El Salvador in early January. The group met with organizations and individuals who serve that country's most disadvantaged residents. It also met with people involved in a generation-long rebuilding process following the Civil War.

Olsen has traveled to more than 80 countries. As she ascended to the executive level during three separate stints in the Peace Corps, which

mandates turnover to bring in fresh perspectives, Olsen says she relied on her Social Work degree. "It prepared me as much as I think any degree could have prepared someone" for a career in public policy and for leadership, she says.

Olsen was drawn to social work as early as age 11, when she accompanied a relative to the

office and saw what it was like to manage a social services agency. As a young adult she experienced another pivotal moment, which directed her toward a policy career. Assigned to the case of a woman in New York, Olsen recalls concluding: "She doesn't need counseling; she needs a Medicaid card."

As chief of staff of the Peace



The School of Social Work's Jody Olsen on a recent trip with students to El Salvador.

Corps in 1989, she took on the aftermath of two very different international events: the Tiananmen Square massacre in China and the fall of the Berlin Wall in Germany. She went on to oversee the opening of the agency's first program in Hungary and other Central and Eastern European countries, noting the cultural challenges during this period of significant change.

Earlier this summer, Olsen joined a multidisciplinary student research team to Malawi in hopes of gathering a more comprehensive understanding of global health issues through the incorporation of diverse disciplinary perspectives. "I have had many amazing experiences, but this ranks close to the top," says Olsen. She has also recently led the development of a successful proposal to establish a Peace Corps Master's International program at the School--the first school of social work to establish one. This program allows students to synopate time at the School with a two-year stint in the Peace Corps before returning to complete their MSW degree.

"From the first time I met her," Dean Barth reflects, "I knew that Jody Olsen was a very talented and dedicated leader who would make great contributions to the School. Within a month of her arrival I knew that she would be able to contribute considerably to the imagining and implementation of international field placements, the deepening of our connections to the Peace Corps, the strengthening of our work with the HIV Prevention and Response programs in Africa, and new initiatives to prevent and reduce gender-based violence. I am very grateful to Dr. Olsen for jumping into the fray and holding her own in a swift current of new initiatives that I have asked her to lead or that she has uncovered."



The School Works with the Peace Corps to Attract Some of the World's Best Students

Returning Peace Corps volunteers often make the School of Social Work's most outstanding students and they are recruited heavily by the very best schools of social work across the country. Something about the experience of committing two years of one's life to a noble cause creates an energy and focus that translate well into earning a graduate degree in social work. Since 2005, the School of Social Work has become more aggressive in terms of recruiting these highly sought after students through the Peace Corps Master's International Program. Helping to lead the charge for the School is Lane Victorson.

Lane Victorson is a former Shriver Center Peace Worker and former Peace Corps Volunteer who traveled to the Comoros Islands off the east coast of Africa. "I went to teach environmental education in the local schools but the teachers were not being paid for over a year so the schools actually were closed. I ended up doing agri-forestry work. I planted living fences and terraces and I also worked with the United States Embassy to help lead the development of several nurseries in the area."

Victorson and the School's Peace Corps Fellows program

are housed in the School's Social Work Community Outreach Service (SWCOS) office, where the idea for the program originated with SWCOS Director Dick Cook.

Working hand-in-hand with the Peace Corps' national offices, the Fellows program tries to provide Peace Corps workers with an educational benefit besides the volunteer experience itself. "One of the incentives the Peace Corps provides is this special scholarship program," says Victorson. This incentive is needed for a variety of reasons. The educational support, post-Peace Corps experience, is designed to help diversify the Peace Corps ranks in terms of students who may have not pursued the Peace Corps option.

The School's participation in the Peace Corps USA Fellows program gives the School benefits as well. Victorson explains that "The School is on the Peace Corps USA web site and at the close of service for all the volunteers abroad we are kind of front and center when educational options are being discussed." He adds, "Every PC volunteer knows that if they want to pursue graduate school, the School of Social Work is an option for them. This is an excellent recruiting arm we do

not have to maintain and that's why we have students coming here from Oregon, California, and all over the place. I work with these students who say to me they would not have looked at Baltimore had it not been for the Fellows program."

Unlike other better-funded programs where schools can offer full-tuition scholarships, the School of Social Work is currently able to assist with work-study opportunities, paid field placements, or some level of tuition assistance. According to Victorson, "We, on the average, take 4 to 6 students a year. We can usually offer them \$4,000 for their first year of study and \$12,000 for the second." Stipends for the program come from several sources--funded field placements; SWCOS endowment funds; federal work study dollars; and the School of Social Work which helps guarantee funding for up to six Peace Corps Fellows if the other resources fall short. As part of the program, Peace Corps fellows work in the School's SWCOS office and experience extra benefits being a part of the SWCOS team. According to Victorson, "SWCOS gives them additional social work training and they feel more connected. What happens is these Peace Corps volunteers

have been overseas for two or three years, they come back, they are in transition, and they don't really know where they are going to land so you come to Baltimore and commit another two years of your life. When people get done here they have this SWCOS network and have gone through three or four other networks (undergrad, Peace Corps, and graduate school). They get to this point where I think there is a settling in of 'wow, I got some contacts, got some networks, relationships built' and we find our alumni feel more comfortable staying in the Baltimore area."

To date, sixteen students have gone through the Peace Corps Fellows program at the School. Many remain in the area to pursue jobs given its excellent location. These graduates work for such places as the International Youth Foundation; Lutheran Immigration Refugee Services, Maryland Board of Child Care, and Advocates for Survivors of Torture and Trauma to name but a few.

While still young, the School's Peace Corps Fellows program competes against other schools of social work recruiting these outstanding students. "Returning PC volunteers are among our most engaged students," explains Victorson, who adds, "We hope to increase our funding to recruit even more of these students to the School."

You can read more about the Peace Corps Master's International program online at www.ssw.umaryland.edu/peace_corps.

Julia Freed, MSW '07, Puts Her Peace Corps Experience Into Action



Julia Freed is a 2007 graduate of the School. She returned from serving in the Peace Corps to study social work. Here, in her own words, she describes how important the Peace Corps, and the School, were in shaping her future.

"I was a Peace Corps Volunteer in the Federated States of Micronesia (FSM) from 2003 through 2005. During that time, I worked with the State Health and Social Affairs Departments to co-create a Youth Center for young people aged 10 – 24 in the nation's capital. The youth center included computers, a library, a tutoring group for at-risk youth, and a cadre of peer educators that we trained to educate others in adolescent reproductive health, using the United National Population Fund model (and funding). I assisted the FSM national government in developing national youth health policy at this time. Additionally, I coordinated Camp GLOW (Girls Leading Our World) which provided leadership training to

at-risk girls from all over the area.

After receiving a Peace Corps Fellows scholarship I attended the School of Social Work. At that time, I acquired additional knowledge on community mobilization and organizing and program management that has helped me in my current job at the International Youth Foundation.

I currently manage several health and life skills projects globally at the International Youth Foundation. I manage the Empowering Africa's Young People Initiative (EAYPI), a 5-year USAID/PEPFAR (U.S. President's Emergency Plan for AIDS Relief) funded project which trains youth peer educators and parent-to-child communication facilitators to disseminate HIV prevention messages in Uganda, Tanzania, and Zambia. We work with 16 local organizations such as the YMCA, YWCA, Scouts, Girl Guides, and Red Cross. So far we have reached over a million youth in these countries. I also manage the Zambia Community Health

Worker Initiative, a Johnson & Johnson-funded project that will train 100 of our EAYPI Peer Educators as Community Health Workers, and then place them into jobs and internships in Zambia.

Additionally, I am a master trainer and manager of IYF's 'Passport to Success' Life Skills program, an interactive and participatory model of life skills education that has been utilized among IYF's partner organizations globally. I currently manage Wrigley-funded life skills programs in the Philippines, India, Russia, Poland, and Spain.

My Peace Corps experience and education at UMB have contributed significantly to my current job position. Through the Peace Corps, I gained knowledge and experience in Health Education, community mobilization and policy. At UMB, I learned information about logical frameworks and indicators that guides me in my everyday program management tasks. Additionally, the program management and supervision classes that I took at UMB taught me how to successfully circumnavigate challenges in the projects I work with. We do a lot of community organizing and mobilization in our field work and my experiences both in the Peace Corps and at the School in Professor Steven Soifer's organizing class proved to be valuable precursors to my comprehension of this process.

My work now is focused on youth empowerment and prevention of risky behaviors through health and life skills education and by linking youth with livelihoods. I believe that this preventative approach saves social workers the task of problem-solving and rehabilitation down the road, because we are guiding young people toward successful futures using an asset-based approach."

International Social Work Experiential Course: Ten Days with El Salvadorian Social Services

By Dr. Jody Olsen, Visiting Professor and former Deputy Director of the Peace Corps

Even in 10 days, any new country offers multiple layers of discoveries, and El Salvador exceeded the expectations. Between January 4 and 14, 2010, professors Dick Cook and Jody Olsen led a group of 15 MSW students (SOWK 705) to El Salvador to learn how social work services are delivered and to gain a contextual background to the students' work with immigrant populations in the Baltimore and Washington DC areas.

The schedule included, from a social service perspective, examples of the diversity and richness of El Salvadorian history, culture, geography, social systems, and political and economic structures.

In San Salvador, specific activities included a day at the Congress, meeting representatives from both political parties, and visits to a hospital and clinics, to a factory, and with mining laborer union organizers and advocates, to churches and seminaries pivotal during the El Salvadorian civil war (1979 – 1992), to memorials to those slain during the war, to centers of community HIV/AIDS prevention programs, and to neighborhoods from which many El Salvadorians have emigrated. Throughout the trip, El Salvadorians providing services, including social workers, described their work, the populations they serve, resources available, and significant problems they face.

In villages outside San Salvador, the class spent time

with two different women's co-ops. The women in each co-op had been refugees from the civil war, and they told stories about significant loss and subsequent rebuilding of their lives and livelihoods.

During a two-day trip to rural Cinquera, students visited clinics and talked to the caregivers, climbed hills (now forests) where some of the most intense fighting took place during the war, and interacted with local leaders who have spent a generation helping refugees return to reestablish families and rebuild communities.

Two critical themes were reinforced throughout the trip:

- After 18 years, the civil war's impact on individuals, families and communities continues. The war still affects their beliefs, their livelihoods, their safety, their politics, and their hopes for themselves and their families.
- The interconnectivity between El Salvador and the United States, and the impact of US foreign policy decisions on El Salvador. Students saw and heard first hand the impact of US immigration and deportation policies affecting families and urban gangs, of the flagging US economy on remittances and families receiving them, and of the Central American Free Trade Agreement (CAFTA) on factory and farm workers.

Throughout the trip, students experienced the heritage of El Salvadorians with whom they work in Baltimore and Washington. Many students were now eager to discover more details of their El Salvadorian clients' backgrounds, and also

those of other recent immigrants, so as to serve better.

Students completed journals based on questions requiring detailed observation, and

are writing a paper on an El Salvadorian social service issue that has the most impact on them as they continue their work and schooling.



Those Called to Serve in the Peace Corps

The School of Social Work has a long list of alumni, students, and staff who have spent time, either before attending the School or after, volunteering to serve in the Peace Corps. Here is a far from complete list of alums who have served.*

Name - Graduation Year - Peace Corps Placement & Years

ALUMNI:

Elizabeth Alex, MSW '02: Mali 1998-2000, Ecuador 2003-05
Sally Altland, MSW '08: Botswana 2003-05
Margot Aronson, MSW '85: Washington, DC 1975-81
Wardell Barksdale, Jr., MSW '97: Liberia 1975-77
Barbara Beach, MSW '72: South Korea 1969-70
Rebecca Cornfield, MSW '04: Uzbekistan 1999-2001
Stephen Davidson, MSW '66: Washington, DC 1961-62
Phyllis Yvonne (Bradley) Dodd, MSW '96: Ecuador 1978-79
Julia Freed, MSW '07: Micronesia 2003-05
Michael Gaffney, MSW '08: Panama 2002-05
Michael Giordano, MSW '99: Lithuania 1993-95
Stephanie Hagan (Myers), MSW '05: Paraguay 2002-04
Brenda Jaudon, MSW '77: India 1968
Paul Kaplan, MSW '71: Sierra Leone 1967-69
Elizabeth Kaylor, MSW '93: Grenada 1997-2000
Jim Krebs, MSW '95: Chad 1996
Michael Lynch, MSW '06: Guatemala 2001-03
Krista Mahler, MSW '07: Moldova 2003-05
James Manni, MSW '98: Mali 1990-92
Catherine McAvoy, MSW '08: Madagascar 2000-02
Kerry McCarthy, MSW '00: Hungary 1993-95
Michael Misterka, MSW '05: Micronesia 2003-05
Harve A Mogul, MSW '71: Philippines 1964-66
Patricia Pella, MSW '76: Tonga 1998-2000
Erin Penniston, MSW '09: Moldova 2004-06
Angela Ratkowski, MSW '07: Benin 2002-04
Chad Sawyer, MSW '09: Vanuatu 2000-02
Unkonda Sawyer, MSW '06: Burkina Faso 2010-2012
Laura Scherner, MSW '07: El Salvador 2003-05
Sarah Shapiro, MSW '08: Dominican Republic 2003-05
Gina Short, MSW '05: Eritrea 1996-98
Richard Southworth, MSW '70: Paraguay 1974-75
Brandon Stratford, MSW '03: Paraguay 1998-2000
Devon Snider, MSW '07: El Salvador 2001-03
Laura Sundquist, MSW '09: Dominican Republic 2003-06
Crystal Thompson, MSW '02: Madagascar 2004-07
James Traglia, MSW '73: Tunisia 1967-69
Nancy Weaver, MSW '82: Guatemala 1976-78
Kim Weingarten, MSW '09: Zambia 2002-04
Steve White, MSW '99: Mali 1983-85

STUDENTS:

Alicia Bower, South Africa 2005-07
Jamie Bussiere, Uzbekistan 2005, Moldova 2005-07
Melissa Esmero, Dominican Republic 2006-08
Sara Montag, Tanzania 2001-03
Tenly Pau, Nigeria 2005-06
Sarah Schweizer, Ghana 2005-07

FACULTY & STAFF:

Richard Cook, Venezuela 1966-67
Jody Olsen, Tunisia 1966-68, former deputy director of the Peace Corps
2002-2009
Laurie Richardson, Turkey 1968-70
Terry Shaw, Nepal 1991-93
Mathew Uretsky, South Africa 2005-07
Lane Victorson, Comoros Islands 1992-94

* list determined by those who responded to an email from the School of Social Work asking if they once served in the Peace Corps. If you notice a name missing we would love to hear about it. Please email us the information at alumni@ssw.umaryland.edu. Thank you.



peace



Jane Brown

Writer, editor, media junkie, and “recovering journalist” are some words Jane Brown uses to describe herself. Today, she may be best known as an innovative philanthropist.

Brown’s career accomplishments include serving previously as editor of *Maryland Business*, managing editor of *Baltimore Magazine*, and features and special projects editor for the *Baltimore Sun*. She has devoted the last 15 years to learning about philanthropy, as executive director of The Robert W. Deutsch Foundation.

The daughter of Robert and Florence Deutsch, the Foundation was started by her father in the early 1990s. Brown says the Foundation “has attempted to work with a variety of Maryland colleges and universities by providing multi-year financial support, partnership (and cheerleading) to enable selected programs and projects to advance and become sustainable.” Projects supported by the Foundation include the Imaging Research Center at the University of Maryland, Baltimore County, the School of Information Arts and Technologies at the University of Baltimore, and the Center for Applied Information Technologies at Towson University. The Foundation also supports biological nanotechnology research at the University of Maryland, College Park. Brown, herself, is a long-time supporter of the School of Social Work, SWCOS, and the Peace Corps Fellowship Program.

“I became aware of the School of Social Work and the Peace Corps Fellowship Program,” states Brown, “through my participation in the



Jane’s parents,
Robert and
Florence Deutsch

Baltimore Neighborhood Collaborative (BNC)--a funder’s collaborative that supported organizing efforts in Baltimore communities--and my work on the board of the Association of Baltimore Area Grantmakers. Even though our Foundation does not directly fund nonprofits in local communities, I felt it was important to understand the community context. Through BNC activities, I was exposed to many community organizations and grew to better understand their challenges. I could see the added value created by those with previous Peace Corps experience.” The School’s Social Work Community Outreach Service (SWCOS) also impacted her decision to become involved with the School’s efforts. “I became intrigued with SWCOS as I attended their annual tour and met MSW students who were doing extraordinary work in difficult communities. While I am not a social worker myself, I began to consider the significant ‘return on investment’ of supporting programs that train graduate students to be effective change agents in communities.” She adds, “Often the complex nature of poverty and underserved communities appears as a ‘black hole’ to funders; a hole that could exhaust mass sums of financial resources without making a lasting difference. SWCOS seemed like an important solution to this conundrum.”

Brown supports this solution through the Peace Corps Fellowship. Her \$10,000 fellowship program helps support Peace Corps volunteers returning to the United States who are pursuing their Master’s degree at the School. Returning Peace Corps volunteers like Liz Alex who works with CASA de Maryland Workers Center, Elise Reuschenberg with the Maryland Department of Housing and Community Development, and Laurel Smith with the Advocates for Survivors of Torture and Trauma to name a few. Many of these returning Peace Corps volunteers work behind-the-scenes and that is one of the main reasons behind Brown’s strong support of this program. “Our gift for the Peace Corps Fellowship Program is in honor of my wonderful parents. My Polish-born mother worked in what would be called today ‘workforce development’ in the Baltimore City government of William Donald Schaefer. This gift is especially intended to honor all her years of ‘behind-the-scenes’ efforts.”

Connections Alumni News

Alumni Supported Scholarships Awarded

The School of Social Work recently announced scholarship winners for its endowed scholarships and other alumni/donor supported initiatives.

The recipients are:

Alumni Association Scholarships

Jessica Lloyd, MSW '10, Laurel, MD

Lyndsey Gue, MSW '10, Dundalk, MD

Kirsten Peterson, MSW '11, Pella, IA

Annual Fund Scholarship

Shana McNew, MSW '11, Abingdon, MD

Mark Battle Scholarship in Non-Profit Management

Ebony Lea, MSW '10, Washington, D.C.

Barbara & Edward Brody Scholarship

Kimberly Gill, MSW '10, Columbia, MD

Paul Ephross Scholarship in Social Work with Groups

Stephanie Bobloch, MSW '11, Baltimore, MD

Deans Lily Gold & Jesse J. Harris Scholarship

Amy Kestelman, MSW '11, Milwaukee, WI

Sylvia and Ephraim Lisansky Scholarship Endowment

Leslie Sherrod, MSW '11, Baltimore, MD

Virginia Lane Magladery and Sarah Magladery Lamont Scholarship Fund

Joshua Brusca, MSW '11, Baltimore, MD

Resnick-Sollins Gerontological Scholarship

April Melton, MSW '11, Damascus, MD

Ellen Virginia Richardson Scholarship

Cory Luquet, MSW '11, Lansdale, PA

Alison & Arnold Richman Endowed Scholarship

Joy-Ann Hogue, MSW '11, Gaithersburg, MD

Stanley Wenocur Scholarship in Community Organizing

Rachel Jacobs, MSW '10, Baltimore, MD

Susan Wolman Scholarship for Work with Children & Families

Akillah Pone, MSW '11, Reisterstown, MD

Leah Soule, MSW '10, Baltimore, MD

Leontine Young Endowed Scholarship

Veronica Temple, MSW '11, Bethesda, MD

To learn more about supporting scholarships at the School, please contact our Development Office at 410-706-2357 or email David Flinchbaugh at dflinchbaugh@ssw.umaryland.edu.

Sue Wolman Peace Corps Matching Gift Program Announced



Long-time School of Social Work supporter and graduate Sue Wolman, MSW '79 has established the Wolman Matching Peace Corps Endowment. She will match all gifts that are made to the newly established Peace Corps Endowment at the School of Social Work. ALL gifts made to the endowment will be matched, with the goal of growing the Peace Corps Endowment to

\$100,000. This endowment will create a source of income to support additional returning Peace Corps volunteers at the School. The goal is to raise \$100,000 by the end of the School's 50th Anniversary celebration in 2011.

The Peace Corps Fellows is a program designed to attract returned Peace Corps Volunteers into social work in Baltimore. The program requires that we offer financial support to the individuals selected as Fellows. According to David Flinchbaugh, assistant dean of development at the School, "Sue knows how important these individuals are to the social work profession here. She also knows that we receive 20 applications for every five we select. We would all like to select more but a lack of funds restricts us."

For more information on supporting this matching gift program, please contact our development office at 410-706-2357 or email David Flinchbaugh at dflinchbaugh@ssw.umaryland.edu.

class of **1965**

Myra Bonhage-Hale, MSW

I was privileged to be inducted in the Towson High School Hall of Fame in 2008. "This Award Identifies the recipient as a successful graduate of Towson High School, Towson, Maryland but also as a role model whose character and achievement will serve as standards of excellence for all present and future students of our Alma Mater." After graduating in 1965, I worked as a community organizer in the Pennsylvania Avenue area of Baltimore for four years. In the 1970s I volunteered with the League of Women Voters of Baltimore City, hosted the league-sponsored radio program "Politics and People," and worked with displaced homemakers. In the 1980s I faced new challenges in Lewis County, WV, where I painstakingly transformed a run-down homestead into a certified organic farm, with seasonal workshops, college internships and annual Lavender Fair, and listing on the National Register of Historic Places. For the creation of my appealing and environmentally friendly product line, and the initiatives to develop markets in WV, I was named Green Entrepreneur of the Year in 2005 by the WV Environmental Council. I am past president of the WV Herb Association and the Mountain State Organic Grower and Buyers Association. Also, I am a co-founder and past co-director of the Sustainable Living for West Virginia Organization, a group that works with statewide educators and federal agencies, to encourage sustainable solutions in the economic, environmental, spiritual and social arenas. Visit my Peace Museum at www.lapaixherbfarmproducts.com for tools, techniques, and research on War and Peace, the Roads to Economic, Environmental, Peace of Mind, and Human Rights.

class of **1969**

Peg Davis Flannery Bauer, MSW

Don't see much from '69 graduates but I know we are out there. I retired from a private practice that I sold and now love being with my grandchildren and extended family. Social Work has served me well as I was able to develop Catholic Social Services on the eastern shore of Maryland, move on to open Delmarva Counseling Associates where I did clinical work, taught at Salisbury University (SU) in its early days of its social work program development and

also taught a bit in the eastern shore program of UMB School of Social Work before SU developed its graduate program. With all of that come many fine memories and a wonderful life to this very moment. Let's hear from some other of us old timers!

class of **1970**

Phyllis Mensh Brostoff, MSW

I was the President of the National Association of Professional Geriatric Care Managers in 2009 and am the Past President of the Board in 2010.



class of **1972**

Florence Able Harris, MSW

Florence Harris Abel has retired effective December 2009. Last place of employment as an LCSW-C was as Social Work Therapist at Christian Counseling Associates in Columbia, MD.

class of **1980**

Steven Rivelis, MSW

Steven Rivelis recently returned from the National MultiCultural Institute's Leadership Conference where he led the three-day Training of Trainers Diversity Awareness session for corporate, social-profit, and government leaders. He also recently conducted a diversity conflict resolution workshop for the Central Intelligence Agency. He also returned to the University of Washington School of Medicine for phase two of an initiative to help them create a work environment that attracts, retains, and enriches diverse students, faculty and staff. Steven is co-founder and CEO of Campaign Consultation, Inc. Considered by *Inc. Magazine* to be one of the "Top 100 Inner-City Companies in the United States," Rivelis and the Campaign Consultation team have been helping

to organize and advance Cities of Service, a joint campaign by the Obama administration and New York City Mayor Bloomberg's office. Recent projects of Campaign Consultation also include helping to launch First Lady Michelle Obama's "United We Serve: Let's Read. Let's Move" campaign, the rebuilding and rebranding of *Serve.gov* - the nation's go-to site for volunteering and service, as well as staffing and being the "thought partner" for the White House Council on Community Solutions and Civic Engagement. Campaign Consultation has also been early-adapters of social media, building social networking sites and applications for use by the White House, National MLK Day of Service, and VISTA [the domestic Peace Corps]. Steven has served as an adjunct professor at the School of Social Work as well as for Johns Hopkins University's Institute for Policy Studies/Third Sector Project and for the Supreme Court of Virginia.

class of **1984**

Sharon England Slingerland, MSW

After practicing as an attorney/guardian ad litem for children in Richmond, Virginia for over 13 years, I have moved to Pennsylvania and work as a Curriculum and Instructional Specialist.

class of **1985**

Sandra Falconer, MSW

Sandra just published her first full length collection of poetry, "The Six o'clock Siren" through Otter Bay Books. In addition to her MSW in social work (1985), Sandra also has her MFA in Writing (2005) from Spalding University in Louisville, KY.

Elizabeth Schneewind, MSW

Having retired twice, I am now working at the New York City Department for the Aging, through REServe, a program for professionals wanting to work, for a small stipend, for a non-profit. I supervise MSW students from various NY schools - Hunter, Columbia, Fordham - in the Assigned Counsel Projects, which offers legal and social services to low-income elderly facing eviction. We've lived in NYC four years now and are enjoying the city, the culture, and, best of all, a daughter and her family close by.

class of **1988**

Lynn Grodzki, MSW

Lynn Grodzki, LCSW, MCC (Master Certified Coach) has published her fifth book on practice-building tools for therapists. Her new book, *Crisis-Proof Your Practice: How to Survive and Thrive in an Uncertain Economy* was published by WW Norton last month. Grodzki is a popular presenter at national social work conferences. For more information visit www.privatepracticesuccess.com.



Hanneke Miley, MSW

Hanneke Miley lives in Holland and recently visited Baltimore with her husband and paid a visit to her alma mater. She was happy to reconnect with the School and spent time visiting with several School officials. She is interested in our work with parents and children. Though now retired, she is helping a university in the Netherlands establish a Masters Program to enhance the European version of social work, but specifically with parenting.

class of **1990**

Kathleen Combs (Sencindiver), MSW

I was part of the Western Maryland program started by Dr. Iona Hyland. Since graduation, I have worked in all settings from inpatient psychiatric to day treatment, outpatient, residential treatment programs, private practice, and even in school settings. I currently work in two VA primary care clinic settings here and at Hagerstown and do outpatient therapy with youth & families in Virginia at Crossroads Counseling. I've received certifications as a Master Social Worker Addictions Counselor and as a Reiki Master. Much of my time is involved with Lakota ceremonies and advocating for American Indians. I've enjoyed being the breeder of Nokota & Appaloosa horses at Wolf Spirit Farm. I still do some EAP work here at the VA and am the Program Manager for the Special Emphasis Native American Program with the EEO Office here. I would enjoy hearing from past classmates.

class of **1991**

Virginia Hines Sherman, MSW

On September 30, 2009 I completed my doctoral degree in Human Services. My dissertation topic was Homelessness: Women Veterans' Perspective. I have submitted two articles for publication and have two upcoming speaking engagements. I have been employed with the Department of Veteran Affairs for 24 years.

class of **1992**

John Archambeault, MSW

John has been living and working in London, England since 2001. Following six and a half years working as a psychotherapist with the Alexandria Mental Health Center in Alexandria, VA, John moved to England to study traditional Chinese medicine and acupuncture. He became a qualified acupuncturist in 2004. On top of this, he continues to be actively involved in social work practice, consulting and education. He is currently a Senior Lecturer in Social Work at Kingston University where he leads modules in human growth and development and in social work issues, teaching both on its Master's and Bachelor's programs. In 2008, he taught at Kemi Tornio University of Applied Sciences in northern Finland as part of a European Union lecturer exchange. In 2009, he published his first book, *Reflective Reader: Social Work and Mental Health*, which, through a combination of extracts from other writing and reflective exercises, provokes readers to engage with meaningful and pertinent aspects of practicing mental health social work. Between 2003 and 2008, he worked at the Henderson Hospital, a well-known democratic therapeutic community which offered residential treatment for trauma and personality disorder. While there, he co-conducted psychotherapy and task groups. The Henderson temporarily closed in 2008. Currently, John is coordinating a learning needs inquiry of mental health social workers working in southwest London before becoming part of a large United Kingdom initiative that will expand the provision of cognitive behaviour therapy. Outside of work, John has had some great opportunity with London as a base to travel to many parts of Europe and in northern Africa. He has maintained US social work links by working with Florida State University's international

social work programs as a field instructor for London-based MSW students and as an adjunct faculty member. Please feel free to be in touch by writing to: jarchambeaultmsw@googlemail.com.

class of **1994**

Nancy Craven Kurtz, MSW

I began a private practice in April 2008. How wonderful it is to be at this stage in this outstanding career and helping clients to become more comfortable with life's struggles.



Robert Scuka, MSW

Robert had his article "That's Just Who I Am: How the Ambiguities of Language Influence Our Concept of Personality and Negatively Impact Couple Relationships" published in the *Journal of Couple & Relationship Therapy* (9)16-30, 2010.

class of **1996**

Tracye Polson, MSW

I have a private psychotherapy and parenting coordination practice in Bethesda, MD. I am teaching in the MSW program at Catholic University's National School for Social Service. I completed the coursework for my PhD from Smith College School for Social Work and have begun work on my dissertation.

class of **1998**

Renee Collins, MSW

Correction: In a class note published in the Winter 2010 issue we forget to include that Renee also received her PhD from the School of Social Work in 2008. Renee added in an e-mail to the School, “I am still in England and most likely will retire here if I am granted ‘leave to remain’ when it comes time to renew. I continue to work with Gloucestershire County Council as a social worker and trainer for ongoing SSW education as well as training foster careers.”



Stacey Curran, MSW

I would love to reconnect with members of the class of 1998 for networking. Contact me at spunkstace@yahoo.com.

class of **1999**

Patricia Brown Henry, MSW

Wrote the following for the School’s most recent graduates and current students: “Good luck to all of you as you go forward with your career! Study hard and work hard to achieve bigger and better things in Life! God Bless you all.”

class of **2001**

Margaret Kasmierski, MSW

I have just accepted a Senior Social Worker position with the VA working in the MS and Spinal Cord Injury Clinics. My goal is to return to the School of Social Work to pursue a Doctorate degree and research therapeutic interventions with chronic illness and PTSD.

class of **2004**

David Dowd, MSW

My social work career has been very exciting and challenging over the past 5 years. I am now embarking on a new challenge as the Director of Mental Health Services for the Miami-Dade Regional Juvenile Detention Center. I want to express my appreciation for the outstanding education provided me by all my professors! Also, I would love to hear from my classmates.

class of **2006**

Kerra Trusty, MSW

The Social Work profession has enabled me to secure a position as the Senior Counselor with the University of Maryland, Baltimore County Upward Bound Program. I have had the distinct privilege of working with low-income, first-generation students in the Baltimore city and Baltimore county regions. My primary focus has been providing a holistic approach to providing college preparatory services for participants in the program. I am truly thankful and grateful for the education I received at the University of Maryland School of Social Work. The critical skills I obtained during my tenure in graduate school have given me the ability to effectively work with adolescents and their families. Through my experiences with Upward Bound I have been given an opportunity to give back to my community as well as develop my expertise within the field of human services. Much of my expertise has involved providing clinical services for adolescents and their families. Through these endeavors I have served as the Maryland Upward Bound program representative, certified facilitator via the Princeton Center for Leadership Training, and established member of TRIO organizations governed in Maryland and the Mid-Atlantic region. Nonetheless, UMB has provided me with a foundation to pursue future goals which include the following: obtaining my LGSW license, becoming a published poet, and continuing my work with the Upward Bound Programs.

NASW Honors Alums

The School is pleased to announce that several School of Social Work alums were selected to be honored at the National Association of Social Work-Maryland Chapter's Annual Social Work Month Conference back in March.



NASW-MD honored Ms. Jean Tucker Mann, MSW '74, with the Lifetime Achievement Award. She has been a social work professional for 35 years, providing every level of social work service throughout her career. Her accomplishments are far reaching. She was a member and officer of the Board of Advisors at the School from 1994 through 2008.



Mr. Jeff Singer, MSW '85, was recognized as Social Worker of the Year highlighting his leadership at Health Care for the Homeless where he is currently CEO and for his tireless efforts on behalf of those in need of health services.



Ms. Carrie Vick, MSW '79, received the honor of Field Instructor of the Year for her work overseeing the field education program at the Johns Hopkins Hospital which provides training for graduate level students from several master's programs.

In Memoriam



Former University of Maryland, Baltimore (UMB) Chancellor **Albin Owings Kuhn, PhD, MS, BS**, died March 24, at his home in Carroll County. He was 94.

Kuhn was the leader of UMB from 1965 until 1980. During that period, the Baltimore campus grew from eight acres to more than 25 acres. New facilities

were provided for each of the six professional schools and University Hospital.

Former University of Maryland School of Social Work **Professor Max Siporin** died in May. He was 93.

Robin McKinney, MSW '97, passed away unexpectedly on February 21. She was a doctoral student at Virginia Commonwealth University's School of Social Work.

Timothy Quinn, MSW '84, executive director of The ARC-Northern Chesapeake in Maryland, died January 10 following a battle with melanoma.

The Rev. Grafton E. "Lindy" Keeney, MSW '67, died July 9 in Birmingham, Alabama. He was 83.

Darnell Morris-Compton MSW '07

With a journalism background, a life researching and writing stories awaited Darnell Morris-Compton. Darnell was editor-in-chief of Ball State University's daily newspaper while he was a student and graduated with a bachelor's degree in journalism from there in 1998. Darnell also did freelance writing for the *Fort Wayne News-Sentinel* and the *Indianapolis Star* newspapers. "As a journalist, I interviewed social workers and appreciated their contributions to society. I have always respected social workers and I have always been interested in the profession. My wife, Sarah, received her bachelor's degree in social work from Ball State and her work with various populations piqued my interest as well," stated Darnell. Sarah had long wanted to be part of the Peace Corps and the newlyweds signed up together a few weeks after they married.

The Peace Corps sent Darnell and his wife to Turkmenistan in 2000 and it was career-changing experience for the aspiring writer. Turkmenistan is located in central Asia and is mostly desert. "We were health volunteers where I worked mainly in the local school teaching health concepts with the school nurse, and Sarah worked with the nurses in the clinic. She focused on women's issues, while I worked with children and some of the men in the community," Darnell explained. In a 2006 interview in *The New Social Worker*, Darnell said the experience brought out in him a part that aimed to work for change rather than just "be a fly on the wall" and document it. Darnell stated in that interview that "journalism didn't have the direct influence as social work." Darnell added, "I learned about the complexities and interactions of people, culture, organizations, and government, all of which affected community development. I learned about how different communities can organize themselves. I learned about differences in governmental structures and processes and its impact on individuals and families. In addition, I learned about myself. I gained a greater confidence about my abilities after living overseas. I guess living in a tin-roofed home with no water or electricity will do that. I learned a lot about myself, my own culture, and my sense of self. I broadened my understanding of the world through Peace Corps."

Following the couple's experience in Turkmenistan and another Peace Corps experience performing HIV/AIDS education in Kenya, Darnell returned to the United States and altered his well-prepared career plan that included spending the rest of his life living in Indiana and writing for the *Indianapolis Star*. Darnell explored earning a



master's degree in social work and decided to move to Baltimore to attend the University of Maryland School of Social Work. Earning his MSW degree in 2007, Darnell is now enrolled in the School's Doctoral program. "I was a student earning my master's degree in social work when I first considered the PhD program. The professors at the School of Social Work are very supportive and accessible. They, along with my wife, encouraged me to transition into the PhD program." Darnell is teaching and researching while in the School's program. "I am teaching the statistics workshop during the summer session and Human Behavior in the Social Environment II during the Spring semester. I love it," Darnell exclaimed. Concerning his research work, "I am constructing a measurement instrument of resilience targeting urban African American youth. Right now, I am learning all I can about the construction and testing of measurement instruments."

Darnell's expects to earn his PhD degree from the School in 2012 and from there he hopes to one day teach on the university level, continuing his research on resilience, and obtaining his LCSW-C license.



Jane Brown

Writer, editor, media junkie, and “recovering journalist” are some words Jane Brown uses to describe herself. Today, she may be best known as an innovative philanthropist.

Brown’s career accomplishments include serving previously as editor of *Maryland Business*, managing editor of *Baltimore Magazine*, and features and special projects editor for the *Baltimore Sun*. She has devoted the last 15 years to learning about philanthropy, as executive director of The Robert W. Deutsch Foundation.

The daughter of Robert and Florence Deutsch, the Foundation was started by her father in the early 1990s. Brown says the Foundation “has attempted to work with a variety of Maryland colleges and universities by providing multi-year financial support, partnership (and cheerleading) to enable selected programs and projects to advance and become sustainable.” Projects supported by the Foundation include the Imaging Research Center at the University of Maryland, Baltimore County, the School of Information Arts and Technologies at the University of Baltimore, and the Center for Applied Information Technologies at Towson University. The Foundation also supports biological nanotechnology research at the University of Maryland, College Park. Brown, herself, is a long-time supporter of the School of Social Work, SWCOS, and the Peace Corps Fellowship Program.

“I became aware of the School of Social Work and the Peace Corps Fellowship Program,” states Brown, “through my participation in the



Jane’s parents,
Robert and
Florence Deutsch

Baltimore Neighborhood Collaborative (BNC)--a funder’s collaborative that supported organizing efforts in Baltimore communities--and my work on the board of the Association of Baltimore Area Grantmakers. Even though our Foundation does not directly fund nonprofits in local communities, I felt it was important to understand the community context. Through BNC activities, I was exposed to many community organizations and grew to better understand their challenges. I could see the added value created by those with previous Peace Corps experience.” The School’s Social Work Community Outreach Service (SWCOS) also impacted her decision to become involved with the School’s efforts. “I became intrigued with SWCOS as I attended their annual tour and met MSW students who were doing extraordinary work in difficult communities. While I am not a social worker myself, I began to consider the significant ‘return on investment’ of supporting programs that train graduate students to be effective change agents in communities.” She adds, “Often the complex nature of poverty and underserved communities appears as a ‘black hole’ to funders; a hole that could exhaust mass sums of financial resources without making a lasting difference. SWCOS seemed like an important solution to this conundrum.”

Brown supports this solution through the Peace Corps Fellowship. Her \$10,000 fellowship program helps support Peace Corps volunteers returning to the United States who are pursuing their Master’s degree at the School. Returning Peace Corps volunteers like Liz Alex who works with CASA de Maryland Workers Center, Elise Reuschenberg with the Maryland Department of Housing and Community Development, and Laurel Smith with the Advocates for Survivors of Torture and Trauma to name a few. Many of these returning Peace Corps volunteers work behind-the-scenes and that is one of the main reasons behind Brown’s strong support of this program. “Our gift for the Peace Corps Fellowship Program is in honor of my wonderful parents. My Polish-born mother worked in what would be called today ‘workforce development’ in the Baltimore City government of William Donald Schaefer. This gift is especially intended to honor all her years of ‘behind-the-scenes’ efforts.”

Connections Alumni News

Alumni Supported Scholarships Awarded

The School of Social Work recently announced scholarship winners for its endowed scholarships and other alumni/donor supported initiatives.

The recipients are:

Alumni Association Scholarships

Jessica Lloyd, MSW '10, Laurel, MD

Lyndsey Gue, MSW '10, Dundalk, MD

Kirsten Peterson, MSW '11, Pella, IA

Annual Fund Scholarship

Shana McNew, MSW '11, Abingdon, MD

Mark Battle Scholarship in Non-Profit Management

Ebony Lea, MSW '10, Washington, D.C.

Barbara & Edward Brody Scholarship

Kimberly Gill, MSW '10, Columbia, MD

Paul Ephross Scholarship in Social Work with Groups

Stephanie Bobloch, MSW '11, Baltimore, MD

Deans Lily Gold & Jesse J. Harris Scholarship

Amy Kestelman, MSW '11, Milwaukee, WI

Sylvia and Ephraim Lisansky Scholarship Endowment

Leslie Sherrod, MSW '11, Baltimore, MD

Virginia Lane Magladery and Sarah Magladery Lamont Scholarship Fund

Joshua Brusca, MSW '11, Baltimore, MD

Resnick-Sollins Gerontological Scholarship

April Melton, MSW '11, Damascus, MD

Ellen Virginia Richardson Scholarship

Cory Luquet, MSW '11, Lansdale, PA

Alison & Arnold Richman Endowed Scholarship

Joy-Ann Hogue, MSW '11, Gaithersburg, MD

Stanley Wenocur Scholarship in Community Organizing

Rachel Jacobs, MSW '10, Baltimore, MD

Susan Wolman Scholarship for Work with Children & Families

Akillah Pone, MSW '11, Reisterstown, MD

Leah Soule, MSW '10, Baltimore, MD

Leontine Young Endowed Scholarship

Veronica Temple, MSW '11, Bethesda, MD

To learn more about supporting scholarships at the School, please contact our Development Office at 410-706-2357 or email David Flinchbaugh at dflinchbaugh@ssw.umaryland.edu.

Sue Wolman Peace Corps Matching Gift Program Announced



Long-time School of Social Work supporter and graduate Sue Wolman, MSW '79 has established the Wolman Matching Peace Corps Endowment. She will match all gifts that are made to the newly established Peace Corps Endowment at the School of Social Work. ALL gifts made to the endowment will be matched, with the goal of growing the Peace Corps Endowment to

\$100,000. This endowment will create a source of income to support additional returning Peace Corps volunteers at the School. The goal is to raise \$100,000 by the end of the School's 50th Anniversary celebration in 2011.

The Peace Corps Fellows is a program designed to attract returned Peace Corps Volunteers into social work in Baltimore. The program requires that we offer financial support to the individuals selected as Fellows. According to David Flinchbaugh, assistant dean of development at the School, "Sue knows how important these individuals are to the social work profession here. She also knows that we receive 20 applications for every five we select. We would all like to select more but a lack of funds restricts us."

For more information on supporting this matching gift program, please contact our development office at 410-706-2357 or email David Flinchbaugh at dflinchbaugh@ssw.umaryland.edu.

class of 1965

Myra Bonhage-Hale, MSW

I was privileged to be inducted in the Towson High School Hall of Fame in 2008. "This Award Identifies the recipient as a successful graduate of Towson High School, Towson, Maryland but also as a role model whose character and achievement will serve as standards of excellence for all present and future students of our Alma Mater." After graduating in 1965, I worked as a community organizer in the Pennsylvania Avenue area of Baltimore for four years. In the 1970s I volunteered with the League of Women Voters of Baltimore City, hosted the league-sponsored radio program "Politics and People," and worked with displaced homemakers. In the 1980s I faced new challenges in Lewis County, WV, where I painstakingly transformed a run-down homestead into a certified organic farm, with seasonal workshops, college internships and annual Lavender Fair, and listing on the National Register of Historic Places. For the creation of my appealing and environmentally friendly product line, and the initiatives to develop markets in WV, I was named Green Entrepreneur of the Year in 2005 by the WV Environmental Council. I am past president of the WV Herb Association and the Mountain State Organic Grower and Buyers Association. Also, I am a co-founder and past co-director of the Sustainable Living for West Virginia Organization, a group that works with statewide educators and federal agencies, to encourage sustainable solutions in the economic, environmental, spiritual and social arenas. Visit my Peace Museum at www.lapaixherbfarmproducts.com for tools, techniques, and research on War and Peace, the Roads to Economic, Environmental, Peace of Mind, and Human Rights.

class of 1969

Peg Davis Flannery Bauer, MSW

Don't see much from '69 graduates but I know we are out there. I retired from a private practice that I sold and now love being with my grandchildren and extended family. Social Work has served me well as I was able to develop Catholic Social Services on the eastern shore of Maryland, move on to open Delmarva Counseling Associates where I did clinical work, taught at Salisbury University (SU) in its early days of its social work program development and

also taught a bit in the eastern shore program of UMB School of Social Work before SU developed its graduate program. With all of that come many fine memories and a wonderful life to this very moment. Let's hear from some other of us old timers!

class of 1970

Phyllis Mensh Brostoff, MSW

I was the President of the National Association of Professional Geriatric Care Managers in 2009 and am the Past President of the Board in 2010.



class of 1972

Florence Able Harris, MSW

Florence Harris Abel has retired effective December 2009. Last place of employment as an LCSW-C was as Social Work Therapist at Christian Counseling Associates in Columbia, MD.

class of 1980

Steven Rivelis, MSW

Steven Rivelis recently returned from the National MultiCultural Institute's Leadership Conference where he led the three-day Training of Trainers Diversity Awareness session for corporate, social-profit, and government leaders. He also recently conducted a diversity conflict resolution workshop for the Central Intelligence Agency. He also returned to the University of Washington School of Medicine for phase two of an initiative to help them create a work environment that attracts, retains, and enriches diverse students, faculty and staff. Steven is co-founder and CEO of Campaign Consultation, Inc. Considered by *Inc. Magazine* to be one of the "Top 100 Inner-City Companies in the United States," Rivelis and the Campaign Consultation team have been helping

to organize and advance Cities of Service, a joint campaign by the Obama administration and New York City Mayor Bloomberg's office. Recent projects of Campaign Consultation also include helping to launch First Lady Michelle Obama's "United We Serve: Let's Read. Let's Move" campaign, the rebuilding and rebranding of *Serve.gov* - the nation's go-to site for volunteering and service, as well as staffing and being the "thought partner" for the White House Council on Community Solutions and Civic Engagement. Campaign Consultation has also been early-adapters of social media, building social networking sites and applications for use by the White House, National MLK Day of Service, and VISTA [the domestic Peace Corps]. Steven has served as an adjunct professor at the School of Social Work as well as for Johns Hopkins University's Institute for Policy Studies/Third Sector Project and for the Supreme Court of Virginia.

class of **1984**

Sharon England Slingerland, MSW

After practicing as an attorney/guardian ad litem for children in Richmond, Virginia for over 13 years, I have moved to Pennsylvania and work as a Curriculum and Instructional Specialist.

class of **1985**

Sandra Falconer, MSW

Sandra just published her first full length collection of poetry, "The Six o'clock Siren" through Otter Bay Books. In addition to her MSW in social work (1985), Sandra also has her MFA in Writing (2005) from Spalding University in Louisville, KY.

Elizabeth Schneewind, MSW

Having retired twice, I am now working at the New York City Department for the Aging, through REServe, a program for professionals wanting to work, for a small stipend, for a non-profit. I supervise MSW students from various NY schools - Hunter, Columbia, Fordham - in the Assigned Counsel Projects, which offers legal and social services to low-income elderly facing eviction. We've lived in NYC four years now and are enjoying the city, the culture, and, best of all, a daughter and her family close by.

class of **1988**

Lynn Grodzki, MSW

Lynn Grodzki, LCSW, MCC (Master Certified Coach) has published her fifth book on practice-building tools for therapists. Her new book, *Crisis-Proof Your Practice: How to Survive and Thrive in an Uncertain Economy* was published by WW Norton last month. Grodzki is a popular presenter at national social work conferences. For more information visit www.privatepracticesuccess.com.



Hanneke Miley, MSW

Hanneke Miley lives in Holland and recently visited Baltimore with her husband and paid a visit to her alma mater. She was happy to reconnect with the School and spent time visiting with several School officials. She is interested in our work with parents and children. Though now retired, she is helping a university in the Netherlands establish a Masters Program to enhance the European version of social work, but specifically with parenting.

class of **1990**

Kathleen Combs (Sencindiver), MSW

I was part of the Western Maryland program started by Dr. Iona Hyland. Since graduation, I have worked in all settings from inpatient psychiatric to day treatment, outpatient, residential treatment programs, private practice, and even in school settings. I currently work in two VA primary care clinic settings here and at Hagerstown and do outpatient therapy with youth & families in Virginia at Crossroads Counseling. I've received certifications as a Master Social Worker Addictions Counselor and as a Reiki Master. Much of my time is involved with Lakota ceremonies and advocating for American Indians. I've enjoyed being the breeder of Nokota & Appaloosa horses at Wolf Spirit Farm. I still do some EAP work here at the VA and am the Program Manager for the Special Emphasis Native American Program with the EEO Office here. I would enjoy hearing from past classmates.

class of **1991**

Virginia Hines Sherman, MSW

On September 30, 2009 I completed my doctoral degree in Human Services. My dissertation topic was Homelessness: Women Veterans' Perspective. I have submitted two articles for publication and have two upcoming speaking engagements. I have been employed with the Department of Veteran Affairs for 24 years.

class of **1992**

John Archambeault, MSW

John has been living and working in London, England since 2001. Following six and a half years working as a psychotherapist with the Alexandria Mental Health Center in Alexandria, VA, John moved to England to study traditional Chinese medicine and acupuncture. He became a qualified acupuncturist in 2004. On top of this, he continues to be actively involved in social work practice, consulting and education. He is currently a Senior Lecturer in Social Work at Kingston University where he leads modules in human growth and development and in social work issues, teaching both on its Master's and Bachelor's programs. In 2008, he taught at Kemi Tornio University of Applied Sciences in northern Finland as part of a European Union lecturer exchange. In 2009, he published his first book, *Reflective Reader: Social Work and Mental Health*, which, through a combination of extracts from other writing and reflective exercises, provokes readers to engage with meaningful and pertinent aspects of practicing mental health social work. Between 2003 and 2008, he worked at the Henderson Hospital, a well-known democratic therapeutic community which offered residential treatment for trauma and personality disorder. While there, he co-conducted psychotherapy and task groups. The Henderson temporarily closed in 2008. Currently, John is coordinating a learning needs inquiry of mental health social workers working in southwest London before becoming part of a large United Kingdom initiative that will expand the provision of cognitive behaviour therapy. Outside of work, John has had some great opportunity with London as a base to travel to many parts of Europe and in northern Africa. He has maintained US social work links by working with Florida State University's international

social work programs as a field instructor for London-based MSW students and as an adjunct faculty member. Please feel free to be in touch by writing to: jarchambeaultmsw@googlemail.com.

class of **1994**

Nancy Craven Kurtz, MSW

I began a private practice in April 2008. How wonderful it is to be at this stage in this outstanding career and helping clients to become more comfortable with life's struggles.



Robert Scuka, MSW

Robert had his article "That's Just Who I Am: How the Ambiguities of Language Influence Our Concept of Personality and Negatively Impact Couple Relationships" published in the *Journal of Couple & Relationship Therapy* (9)16-30, 2010.

class of **1996**

Tracye Polson, MSW

I have a private psychotherapy and parenting coordination practice in Bethesda, MD. I am teaching in the MSW program at Catholic University's National School for Social Service. I completed the coursework for my PhD from Smith College School for Social Work and have begun work on my dissertation.

class of **1998**

Renee Collins, MSW

Correction: In a class note published in the Winter 2010 issue we forget to include that Renee also received her PhD from the School of Social Work in 2008. Renee added in an e-mail to the School, “I am still in England and most likely will retire here if I am granted ‘leave to remain’ when it comes time to renew. I continue to work with Gloucestershire County Council as a social worker and trainer for ongoing SSW education as well as training foster careers.”



Stacey Curran, MSW

I would love to reconnect with members of the class of 1998 for networking. Contact me at spunkstace@yahoo.com.

class of **1999**

Patricia Brown Henry, MSW

Wrote the following for the School’s most recent graduates and current students: “Good luck to all of you as you go forward with your career! Study hard and work hard to achieve bigger and better things in Life! God Bless you all.”

class of **2001**

Margaret Kasmierski, MSW

I have just accepted a Senior Social Worker position with the VA working in the MS and Spinal Cord Injury Clinics. My goal is to return to the School of Social Work to pursue a Doctorate degree and research therapeutic interventions with chronic illness and PTSD.

class of **2004**

David Dowd, MSW

My social work career has been very exciting and challenging over the past 5 years. I am now embarking on a new challenge as the Director of Mental Health Services for the Miami-Dade Regional Juvenile Detention Center. I want to express my appreciation for the outstanding education provided me by all my professors! Also, I would love to hear from my classmates.

class of **2006**

Kerra Trusty, MSW

The Social Work profession has enabled me to secure a position as the Senior Counselor with the University of Maryland, Baltimore County Upward Bound Program. I have had the distinct privilege of working with low-income, first-generation students in the Baltimore city and Baltimore county regions. My primary focus has been providing a holistic approach to providing college preparatory services for participants in the program. I am truly thankful and grateful for the education I received at the University of Maryland School of Social Work. The critical skills I obtained during my tenure in graduate school have given me the ability to effectively work with adolescents and their families. Through my experiences with Upward Bound I have been given an opportunity to give back to my community as well as develop my expertise within the field of human services. Much of my expertise has involved providing clinical services for adolescents and their families. Through these endeavors I have served as the Maryland Upward Bound program representative, certified facilitator via the Princeton Center for Leadership Training, and established member of TRIO organizations governed in Maryland and the Mid-Atlantic region. Nonetheless, UMB has provided me with a foundation to pursue future goals which include the following: obtaining my LGSW license, becoming a published poet, and continuing my work with the Upward Bound Programs.

NASW Honors Alums

The School is pleased to announce that several School of Social Work alums were selected to be honored at the National Association of Social Work-Maryland Chapter's Annual Social Work Month Conference back in March.



NASW-MD honored Ms. Jean Tucker Mann, MSW '74, with the Lifetime Achievement Award. She has been a social work professional for 35 years, providing every level of social work service throughout her career. Her accomplishments are far reaching. She was a member and officer of the Board of Advisors at the School from 1994 through 2008.



Mr. Jeff Singer, MSW '85, was recognized as Social Worker of the Year highlighting his leadership at Health Care for the Homeless where he is currently CEO and for his tireless efforts on behalf of those in need of health services.



Ms. Carrie Vick, MSW '79, received the honor of Field Instructor of the Year for her work overseeing the field education program at the Johns Hopkins Hospital which provides training for graduate level students from several master's programs.

In Memoriam



Former University of Maryland, Baltimore (UMB) Chancellor **Albin Owings Kuhn, PhD, MS, BS**, died March 24, at his home in Carroll County. He was 94.

Kuhn was the leader of UMB from 1965 until 1980. During that period, the Baltimore campus grew from eight acres to more than 25 acres. New facilities

were provided for each of the six professional schools and University Hospital.

Former University of Maryland School of Social Work **Professor Max Siporin** died in May. He was 93.

Robin McKinney, MSW '97, passed away unexpectedly on February 21. She was a doctoral student at Virginia Commonwealth University's School of Social Work.

Timothy Quinn, MSW '84, executive director of The ARC-Northern Chesapeake in Maryland, died January 10 following a battle with melanoma.

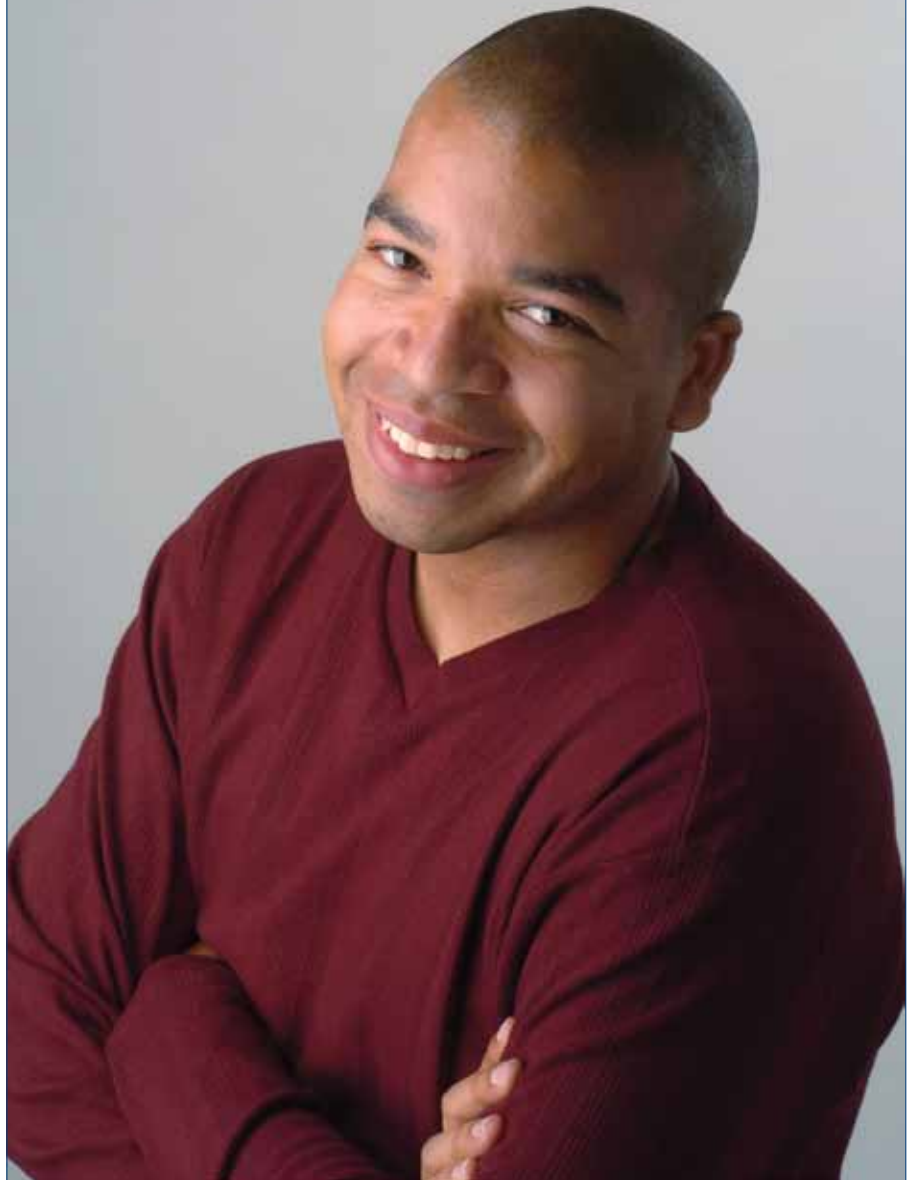
The Rev. Grafton E. "Lindy" Keeney, MSW '67, died July 9 in Birmingham, Alabama. He was 83.

Darnell Morris-Compton MSW '07

With a journalism background, a life researching and writing stories awaited Darnell Morris-Compton. Darnell was editor-in-chief of Ball State University's daily newspaper while he was a student and graduated with a bachelor's degree in journalism from there in 1998. Darnell also did freelance writing for the *Fort Wayne News-Sentinel* and the *Indianapolis Star* newspapers. "As a journalist, I interviewed social workers and appreciated their contributions to society. I have always respected social workers and I have always been interested in the profession. My wife, Sarah, received her bachelor's degree in social work from Ball State and her work with various populations piqued my interest as well," stated Darnell. Sarah had long wanted to be part of the Peace Corps and the newlyweds signed up together a few weeks after they married.

The Peace Corps sent Darnell and his wife to Turkmenistan in 2000 and it was career-changing experience for the aspiring writer. Turkmenistan is located in central Asia and is mostly desert. "We were health volunteers where I worked mainly in the local school teaching health concepts with the school nurse, and Sarah worked with the nurses in the clinic. She focused on women's issues, while I worked with children and some of the men in the community," Darnell explained. In a 2006 interview in *The New Social Worker*, Darnell said the experience brought out in him a part that aimed to work for change rather than just "be a fly on the wall" and document it. Darnell stated in that interview that "journalism didn't have the direct influence as social work." Darnell added, "I learned about the complexities and interactions of people, culture, organizations, and government, all of which affected community development. I learned about how different communities can organize themselves. I learned about differences in governmental structures and processes and its impact on individuals and families. In addition, I learned about myself. I gained a greater confidence about my abilities after living overseas. I guess living in a tin-roofed home with no water or electricity will do that. I learned a lot about myself, my own culture, and my sense of self. I broadened my understanding of the world through Peace Corps."

Following the couple's experience in Turkmenistan and another Peace Corps experience performing HIV/AIDS education in Kenya, Darnell returned to the United States and altered his well-prepared career plan that included spending the rest of his life living in Indiana and writing for the *Indianapolis Star*. Darnell explored earning a



master's degree in social work and decided to move to Baltimore to attend the University of Maryland School of Social Work. Earning his MSW degree in 2007, Darnell is now enrolled in the School's Doctoral program. "I was a student earning my master's degree in social work when I first considered the PhD program. The professors at the School of Social Work are very supportive and accessible. They, along with my wife, encouraged me to transition into the PhD program." Darnell is teaching and researching while in the School's program. "I am teaching the statistics workshop during the summer session and Human Behavior in the Social Environment II during the Spring semester. I love it," Darnell exclaimed. Concerning his research work, "I am constructing a measurement instrument of resilience targeting urban African American youth. Right now, I am learning all I can about the construction and testing of measurement instruments."

Darnell's expects to earn his PhD degree from the School in 2012 and from there he hopes to one day teach on the university level, continuing his research on resilience, and obtaining his LCSW-C license.



UNIVERSITY OF MARYLAND
SCHOOL OF SOCIAL WORK

Louis L. Kaplan Hall
525 West Redwood Street
Baltimore, MD 21201

Nonprofit
U.S. Postage
PAID
Baltimore, MD
Permit No. 5408

Save the Date for These October Events!



Modell Symposium on Domestic Violence with Anna Quindlen

The School of Social Work will kick off its new Modell Symposium Series on Domestic Violence on Wednesday, October 6, 2010 with Pulitzer Prize-winning journalist and best-selling novelist Anna Quindlen.

This special event takes place in the University of Maryland School of Nursing Auditorium beginning at 9:30 a.m. More information on the event can be found at www.ssw.umaryland.edu/modell.



The Daniel Thursz Social Justice Lecture with Donna Shalala

The School of Social Work hosts former President Clinton Cabinet member and current University of Miami President Donna Shalala on Tuesday, October 19, 2010 at 4 p.m. Shalala will discuss "The Unfinished Business of Health Care Reform." More information can be found online at www.ssw.umaryland.edu/thursz.