



UNIVERSITY *of* MARYLAND
BALTIMORE
INSTITUTE FOR CLINICAL &
TRANSLATIONAL RESEARCH

UMB Institute *for* Clinical & Translational Research

August 7, 2019

www.umaryland.edu/ICTR

ICTR-Navigator@umaryland.edu

UMB ICTR (ik-ter)

1st

Universitywide,
interdisciplinary hub for
clinical translational
research and training,
bringing together the
schools of ...



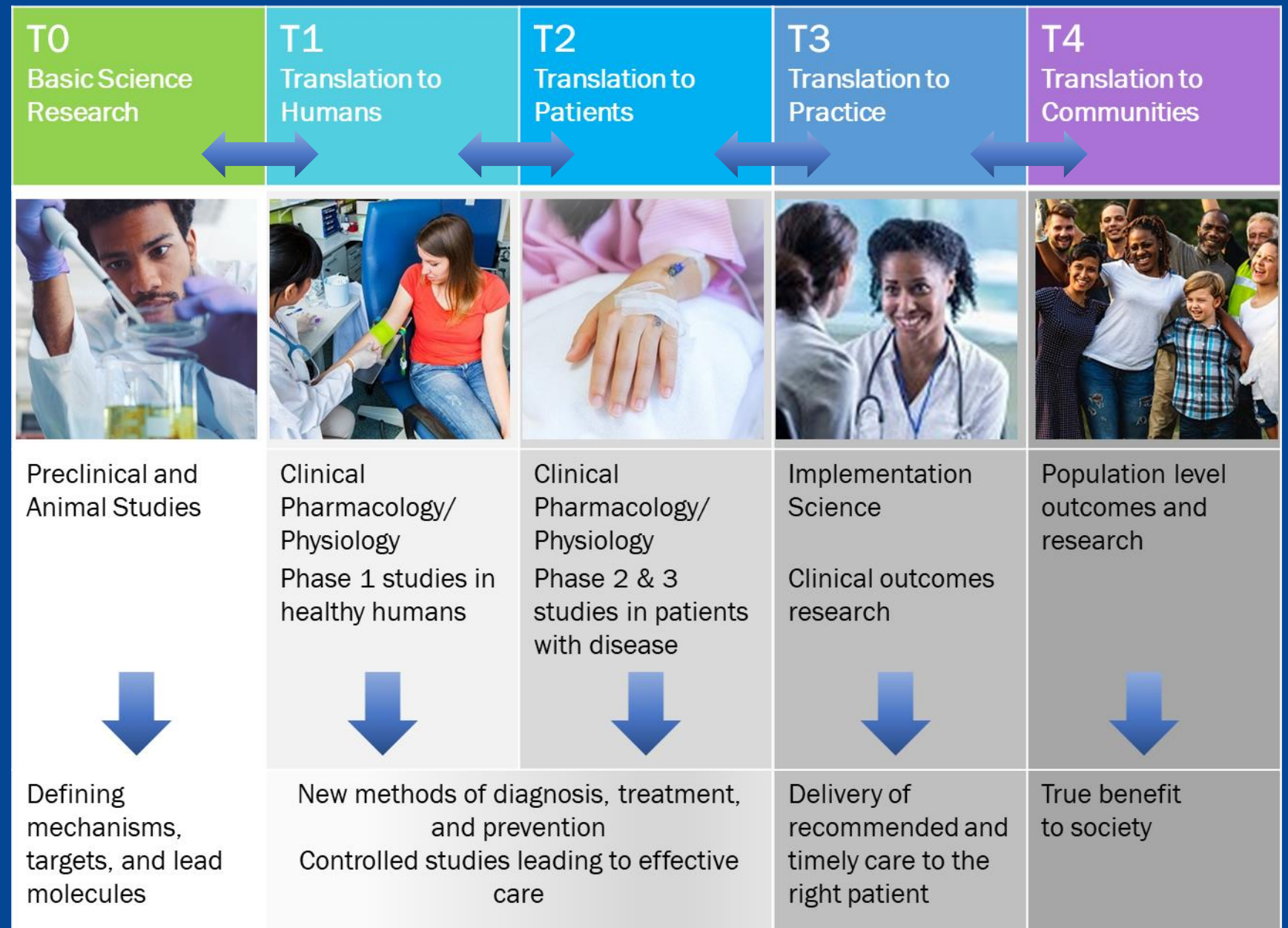
Removing barriers to clinical and translational research and providing a supportive environment and high-quality resources...



- Informatics
- Clinical Research Services
- UMB Core Services
- Community Engagement Expertise
- Biostatistics
- Pilot Funding
- Mentorship
- Experts on Ethics and Regulatory Science



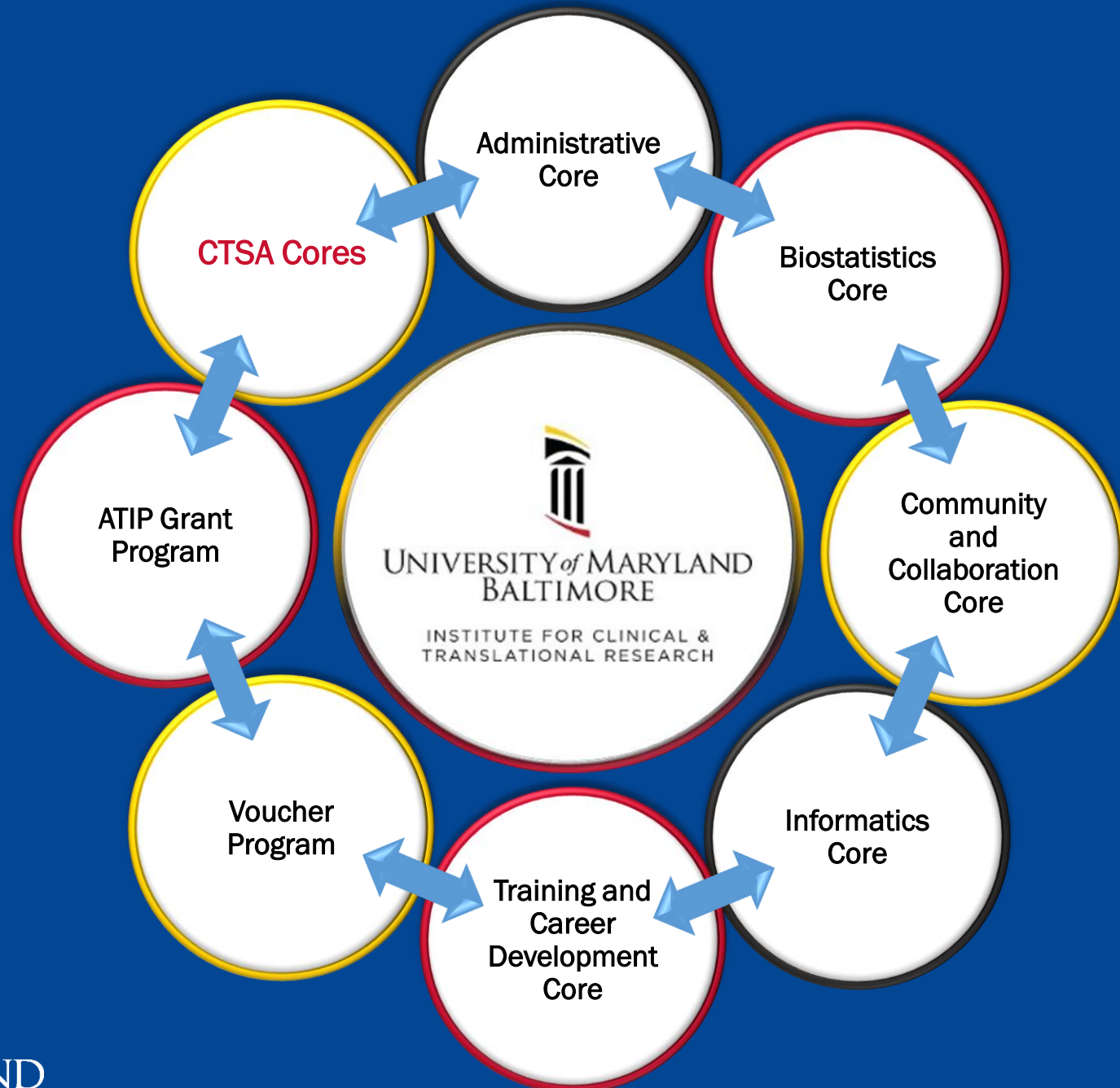
Translational Science Spectrum (T0-T4)



UMB ICTR is disease agnostic, supporting multiple endeavors to support health across diverse communities and the entire lifespan.



UMB ICTR Cores & Resources



ICTR Biostatistics Core Services

- Formulation of Research Question
- Study Design Sample Size Calculation/Power Analysis
- Data Collection/Preparing Data for Analysis
- Data Analysis
- Interpretation of Results
- Reports and Publications
- Statistical Bioinformatics
- Access to Data from Outside Sources



ICTR Informatics Core Services

- Research HARBOR Resources
- REDCap Services
- Qualtrics Survey Services
- Access to Clinical Data and other Specialized Datasets
- Quality Assurance/Control Services
- Pre-review of data for “fit” to proposed project and data readiness for analysis
- Expertise on informatics projects that include end-user experience and user interface



ICTR Community & Collaboration Core Services

- Consultations with PATIENTS Program Outreach and Partners to develop appropriate communication strategies for recruitment materials and dissemination
- Creating focus group/interpreting results
- Developing participant instruction/recruitment videos
- Assembling advisory board
- Connecting with Citizen Scientists



ICTR Community Engagement Initiatives

Provide Research Vehicle for Community Outreach Projects and Research Studies



ICTR Resources, continued

Ask The Navigator

- The ICTR Research Navigator is available to help direct investigators to ICTR services and other UMB core services, as needed, and to advise them on the “next steps” in their clinical and translational research projects. ICTR-Navigator@umaryland.edu

Studios

- The “Studios” program brings together multi-, interdisciplinary experts to provide free, structured, project-specific feedback for researchers



Meet the ICTR Research Navigators



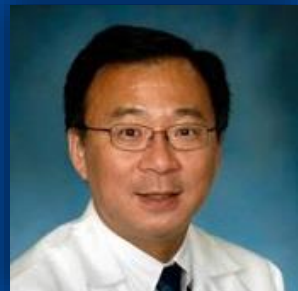
Nicholas P. Ambulos, PhD
UMB Core Resources/CIBR



Yen-Pei "Christy" Chang, PhD
Grant Pre-Review



Meriem Gaval Cruz, PhD
ATIP Pilot Grants/ Tech Transfer



Jung-Soo "John" Hong, MD
Informatics Resources



Graziela Z. Kalil, PharmD
IND/INE Applications/ FDA Trials



Jennifer Marron, BSN, RN
Clinical Research Unit



ICTR Funding Opportunities

Two Mechanisms:

- Voucher “micro grant” Program
 - Up to \$5k in voucher support to enable generation of data on clinical and translational research projects by helping to **defray the costs of other UMB Core Services**
 - Applications accepted every 3 months. Next deadline November 1, 2019
- ATIP Grant Program
 - FOA announced late in the year with application deadline early January. Next deadline January 2020



ICTR ATIP Grant Program

The Accelerated Translational Incubator Pilot (ATIP) Grant Program provides starter funds for projects specifically focused on innovative, **translational research** that involve faculty from the UMB Schools and collaborative partners

Innovative Collaboration Pilot Grant

- 4 or more awards
- 12 months of funding up to **\$50K**

Community-Engaged Research Pilot Grant

- 1 award or more
- 12 months of funding up to **\$50K**



UMB GCRC

The General Clinical Research Center (GCRC) provides University investigators a specialized research environment to conduct clinical research

- Located in UMMC, South Hospital Building, 10th Floor, C & D Wings

When it comes to clinical research, we want you to think of us first!



What Resources Can The GCRC Provide?

- Research Nurses and support staff
- 24 hour nursing care, 7 days a week
- Clinical space
- Education and Training
- Regulatory support and guidance from our Protocol Manager
- EPIC software
- Off site visits



Nursing Staff

- RN's and PCT's with the education, certification and skills to provide quality research participant care. Including but not limited to:
 - Phlebotomy: single or serial PK's
 - Specimen Collection/Processing
 - Investigational Drug Administration
 - Chemotherapy Administration
 - Special Testing/Procedures- GFR, Muscle & Fat Biopsies
 - POC testing: Blood Glucose, Pregnancy Testing, Urinalysis, Hemacue/Hemocult –CLIA certified
 - Subject Teaching



Investigator Support

- Consultation
 - Protocol development and review
- GCRC Advisory Committee (GAC)
 - Provides mentorship and guidance for new investigators
- Provide a safe and precise clinical environment for all forms of clinical research
- For more information, please contact:
 - Meghan Banchemo, Administrative Director - mbanchemo@som.umaryland.edu
 - Jennifer Marron, Protocol Manager - jmarron@som.umaryland.edu



Clinical & Translational Science Award- CTSA

The CTSA was funded with a start date of May 31st, 2019

Project Period: 5/31/2019 - 04/30/2024

UL1 : Johns Hopkins Institute for Clinical and Translational Research

KL2 : Institutional Career Development Core

TL1 : NRSA Training Core



ICTR/CTSA Training Program

The overall goal of the UMB ICTR Training and Career Development Program is to educate, train and develop future generations of clinical scientists needed to move basic research findings into novel therapies

Training Opportunities

ICTR/CTSA TL1 Mentored Pre-doc One-Year Program

ICTR/CTSA TL1 Mentored Post-doc Two-Year Program

ICTR/CTSA KL2 Junior Faculty Career Development Program



ICTR/CTSA TL1 Training Program

TL1 Training Award	# of New Slots	Length of Funding
CTSA PRE-doc	1 PRE-doc per year	12 months <i>Funded by CTSA</i>
ICTR PRE-doc	1 PRE-doc per year	12 months <i>Funded by ICTR</i>
CTSA POST-doc	2 POST-docs per year	2 years <i>Funded by CTSA</i>



ICTR/CTSA KL2 Career Development Program

Training Award	# of New Slots	Length of Funding
CTSA KL2	1 Junior Faculty per year	3 years <i>2 years CTSA and 1 year internal funding</i>
ICTR KL2	5 Junior Faculty every 3 years	3 years <i>3 years internal funding</i>



CTSA Brings Additional Cores

Research Methods Core

- Regulatory Knowledge & Support Advisors

Network Capacity

- Liaison to Trial Innovation Centers (TICs)
- Liaison to Recruitment Innovation Centers (RICs)

Hub Research Capacity

- Integrating Special Populations
- Participant and Clinical Interactions

Drug Discovery and Development

- Pharmaceutical Manufacturing and Enabled Clinical Trial Formulations
- Pharmacometrics
- Computer-aided Drug Design
- Advanced Protein Characterization for Therapeutic Protein Development





UMBC

**UMBC Cybersecurity & Artificial Intelligence (AI)
UMB ICTR Core**

Effective July 1st, UMBC will provide a new Cybersecurity and Artificial Intelligence Core to the UMB ICTR community as part of the UMB ICTR Informatics Core.



UNIVERSITY *of* MARYLAND
BALTIMORE

INSTITUTE FOR CLINICAL & TRANSLATIONAL RESEARCH

Applying for ICTR Resources

- Requirements:
 - UMB Faculty
- Application:
 - Go to www.umaryland.edu/ICTR/investigator-resources for more information and application process
- Questions or Need Assistance?
 - ICTR Navigators are standing by! Email ICTR-Navigator@umaryland.edu



Visit UMB ICTR
at

www.umaryland.edu/ICTR

ICTR-Navigator@umaryland.edu

UNIVERSITY of MARYLAND
BALTIMORE
INSTITUTE FOR CLINICAL & TRANSLATIONAL RESEARCH

MY UMB DIRECTORY MAP CALENDAR Search

SUPPORT ICTR

ABOUT UMB ICTR COMMUNITY ENGAGEMENT INVESTIGATOR RESOURCES FUNDING EDUCATION & TRAINING

UMB ICTR
molecules to communities

**KL2 Mentored Career Development Award - 2019
Call for Applications. Click here for more
information.**

What is the UMB Institute for Clinical & Translational Research (ICTR)?

The UMB ICTR is a clinical translational research initiative supported by the UMB campus.

The UMB ICTR is a campuswide clinical translational research initiative supported by the UMB campus. The UMB ICTR provides financial support as well as infrastructure, environment, training, and workforce to invigorate, facilitate, and accelerate clinical translational research to improve patient and community health. This site will highlight ICTR-supported resources as well as other campuswide shared resources and community-engagement activities. If you are unsure of the "next steps" or have problems with the ICTR website, please email [ICTR Research Navigator](#) and visit this site often for new and expanding UMB ICTR resources. To learn more about UMB ICTR and the tremendous support from the UMB campus, visit [About UMB ICTR](#). PLEASE NOTE: At this time, UMB ICTR resources and funding are available only to Assistant Professor, Associate Professor, and Professor faculty.

