

# Home and Community Based Care Symposium

HomeAcademicsProfessional EducationUpcoming EventsHome and Community Based Care Symposium  
Section Menu

- Upcoming Events
- 2017 Symposium
- 2016 Symposium



## 3rd Annual Symposium on Home and Community Based Care:

*Looking Beyond "Day 30"*

**APRIL 17, 2018**

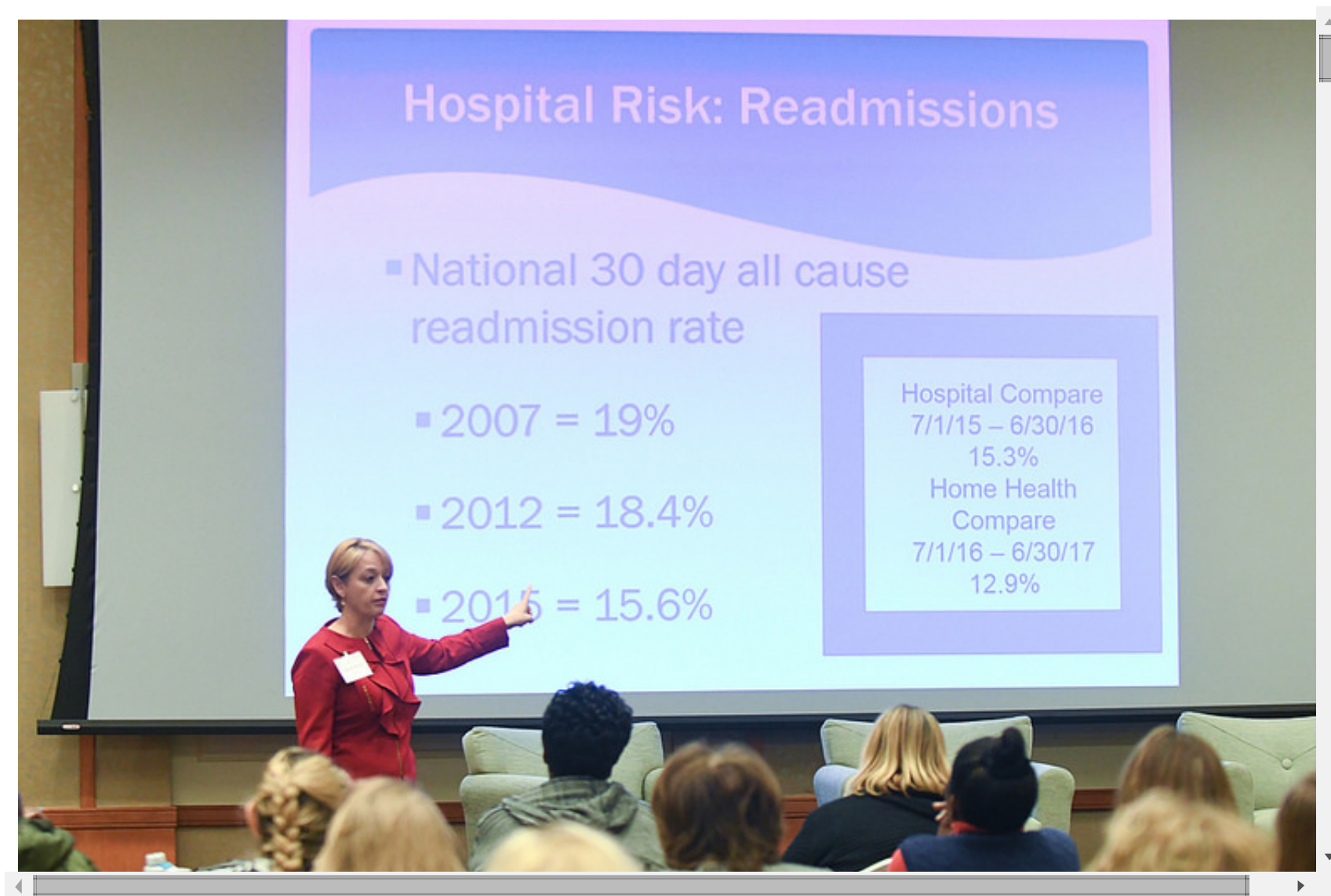
University of Maryland, Baltimore  
SMC Campus Center  
621 W. Lombard St., Baltimore, MD 21201

## 3rd Annual Symposium on Home and Community Based Care Looking Beyond "Day 30"

**This symposium took place on April 17, 2018.**

This one-day conference analyzed emerging trends in home and community based care. Topics such as readiness to reduce hospitalizations in the first 30 days and beyond, translating care across settings, the roles of primary care providers as well as the utilization of CRISP in home based care were explored.

## In Photos: Symposium Recap



View more photos on Flickr.

---

## Symposium Background

A collaborative effort between the University of Maryland School of Nursing and Maxim Healthcare Services, this symposium is designed to inform health care system stakeholders on emerging forces and developments within home and community based care. Each session engages the learner and activates new perspectives on health care and delivery of services. Attendees also learn with and from leaders in health care policy, education, practice, and delivery systems, along with health care practitioners and community members.

Our ultimate aim is to shape the future of health care where individuals, communities, and populations thrive as a result of a vibrant culture of health supported by an effective health care service system.

## Objectives

As a result of participating in this program, learners will be able to:

1. Discuss current and emerging developments in home and community based care.
2. Describe current national and workforce preparedness for reducing re-admission.
3. Collaborate in developing strategies to improve health outcomes of individuals and communities.

## Location

University of Maryland, Baltimore  
SMC Campus Center  
621 W. Lombard St., Baltimore, MD 21201

Travel and Parking

## Continuing Education for Nurses

Nurses may receive six contact hours for participating in this learning activity. Partial credit is not provided. In order to request a certificate of CE, the learner is required to attend the entire symposium, complete an online program evaluation, and submit a verification of attendance form. A continuing education (CE) certificate will be sent via email from the University of Maryland School of Nursing (UMSON) within two to four weeks after submitting all their request and satisfying all requirements. Requests for CE must be received within 30 days following the conference.

The University of Maryland School of Nursing is accredited as a provider of continuing nursing education by the American Nurses Credentialing Center's Commission on Accreditation.

## Continuing Education for Social Workers

The University of Maryland School of Social Work Office of Continuing Professional Education is authorized by the Board of Social Work Examiners in Maryland to sponsor social work continuing education programs and maintains full responsibility for this program.

This training qualifies for 6 Category 1 Continuing Education Units (CEUs). Successful completion of this activity requires your signature on the sign-in sheet, participation in the entire activity, and completion of an evaluation form.

## Agenda

**Registration and Continental Breakfast**  
*Breakfast Sponsored By Maryland Relay*

7:45-8:30 a.m.



**Opening Remarks**

Patricia D. Franklin, PhD, RN

Assistant Professor, University of Maryland School of Nursing  
Chair, Planning Committee8:30-8:35 a.m. *Opening Speaker Sponsored by Medi-Rents & Sales, Inc.*8:35-8:45  
a.m.**Welcome**

Jane M. Kirschling, PhD, RN, FAAN

Dean and Professor, University of Maryland School of Nursing

**Opening Session: Reducing re-hospitalizations in the first 30 days and beyond: Is the nation ready?**8:45-  
9:30 a.m.

Joy Cameron, MPP

Vice President, Policy and Innovation

Visiting Nurse Association of America &amp; Elevating Home

Opening Speaker Sponsored by Northern Pharmacy

View presentation slides. **Reducing re-hospitalizations in the first 30 days and beyond: Are the clinicians ready?**9:30-10:15  
a.m.

Danielle Pierotti, PhD, RN, CENP, AOCN, CHPN

Vice President, Quality and Performance Improvement

Visiting Nurse Association of America

View presentation slides. 

10:15-10:45 a.m. **Open Mic: Questions and discussion with speakers**  
Cameron, Pierotti, and Attendees

10:45-11 a.m. **Break**

11 a.m.-noon **The Role of Primary Care in Home & Community Based Services**  
William S. Queale, MD

noon-12:45 p.m. **Lunch (provided), Exhibitors, and Networking**  
*Lunch Sponsored By ShareCare, Inc.*



12:45-1:45 p.m. **Health Information Exchange: CRISP's usefulness and utility**  
Craig R. Behm  
Sr Director of Marketing and Product Development, CRISP  
Director, Audacious Inquiry

View presentation slides. 

1:45-2:45 p.m. **Panel Discussion: The patient as part of the health care team**  
A Case Study and Interprofessional Team Approach

**Closing Session: Putting all the pieces together**  
W. John Langley, MD

2:45-3:30 p.m. Chief Medical Officer Maxim Healthcare Services, Inc.

View presentation slides. 

3:30-3:45  
p.m. **Final Remarks**  
Keith Jacobs  
Director of Business Operations  
Maxim Healthcare Services

## Registration

Registration fees include all program materials, continental breakfast, lunch, and CE for nurses and social workers.

A limited number of scholarships available for students are available. If you are a health profession student, please contact Emily Parks (pe.nursing@umaryland.edu) prior to registering.

*Student scholarships sponsored By Keswick.*



## Fees

- Full-time Students & Medical Residents: \$20
- Individual: \$65

Register Now

# Resources

- Chesapeake Regional Information System for our Patients (CRISP)
- Visiting Nurse Association of America (VNAA) Blueprint for Excellence
  
- Upcoming Events
- 2017 Symposium
- 2016 Symposium

## Contact

- Office of Professional Education
- Email Us
- 655 W. Lombard Street, Suite 311