

TENTH ALMACA ANNUAL MEETING & EXHIBITS

SAN DIEGO CONVENTION AND
PERFORMING ARTS CENTER
SAN DIEGO, CALIFORNIA
NOVEMBER 17-20, 1981

*Mystery
OK
ALMACA*



The Association of Labor-Management Administrators
and Consultants on Alcoholism, Inc.
1800 North Kent Street, #907



MARWORTH

When Marworth opens its doors in the summer of 1982, it is destined to become one of the most respected alcohol rehabilitation and detoxification centers in the United States.

The planning, preparation, and recruiting for Marworth have been extensive, in order that the programs, staff, and facility are prepared to function to the best advantage of its patients.

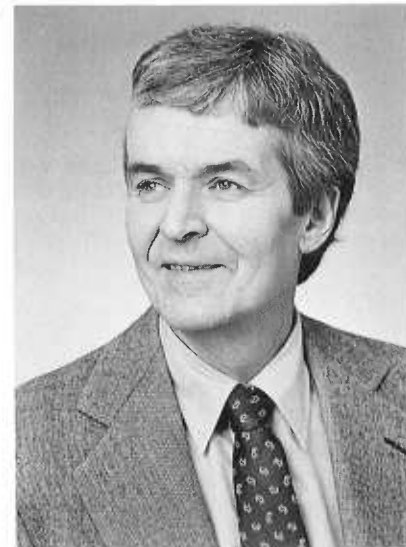
The Marworth estate, acquired through a gift purchase agreement from former Pennsylvania Governor William G. Scranton, consists of 25 acres in a restful, rural setting. In addition to the mansion, Marworth will consist of a 60-bed rehabilitation unit, a 12-bed medical unit for detoxification, a family unit, and an after care treatment program.

Located thirteen miles from Scranton, Marworth is within 2½ hours driving time from New York and Philadelphia, and is readily accessible to the Scranton/Wilkes-Barre airport.

For information concerning any phase of Marworth, please contact Geisinger Medical Management Corporation, (717) 271-8900.

WAVERLY, PENNSYLVANIA 18471

A GEISINGER AFFILIATE



Welcome to the Tenth Annual Meeting of the Association of Labor-Management Administrators & Consultants on Alcoholism, Inc. This conference begins the second decade of the ALMACA network. We are experiencing one of our most successful years as we embark on this decade of change. Our emerging profession is maturing rapidly. The blending of people from the business community and the clinicians who help us and often join our ranks in industry will crystallize as never before here in San Diego.

Our independence as an Association has proven wise. Some of our working concepts have been called into question by newcomers to our field in industry and in attempting to educate them we have reaffirmed our knowledge on the correct way to handle employees referred to our programs. Labor is working in and with ALMACA as never before. We are striving to meet the needs of our consultants who have started so many effective programs. These men and women have been in the forefront of every effort to sell, design, and implement Employee Assistance Programs.

So, lets get on with our conference, resolve our differences, and have a good time.

Again . . . welcome!

Sincerely,

*Edward J. Small
President*

A SPECIAL NOTE OF THANKS

ALMACA would like to acknowledge and thank the San Diego Chapter for their time and effort in putting together the 10th ALMACA Annual Meeting.

We would, however, like to single out the special efforts of Duane Rogers, President of the San Diego Chapter and Chairperson of the 10th AAM. He spent endless hours of his personal time helping National coordinate the tremendous amount of volunteer help it takes to have a successful Annual Meeting.

Conference Chairperson

Duane Rogers
EAP Administrator
County of San Diego

PUBLIC RELATIONS	— Mr. Larry Michael, Villa View Hospital ALERT Unit
FILM FESTIVAL	— Mr. Lee Panttaja, Employee Assistance Service For Education (EASE) & Mr. Bill Albertson, Connecticut General Life
ENTERTAINMENT	— Ms. Pat Rudolph, Clairmont Neighborhood Recovery Center
HOSPITALITY	— Ms. Pat Mulcahy, Hillside Chemical Dependency Center
AUDIOVISUAL	— Mr. Bill Matheny, North Island Employee Assistance Program
LABOR	— Mr. Robert Moeller, Labor's Liaison, AFL-CIO-CSA/United Way
REGISTRATION	— Mr. Fred Lincoln, Rohr Corp. Employee Assistance Program
ROOM MONITORS	— Ms. Paula Flannagan, CARE/Mission Bay Hospital
AA COORDINATING	— Mr. Jim Emslie, Home Federal Savings, Employee Assistance Program
SIGNS	— Mr. Andy Anderson, PAR, U.S. Post Office
EXHIBITS/JOURNAL	— Mr. Ken MacDonald, Alcoholism Unit, Coronado Hospital & Gary Rosenblat, Ph.D.

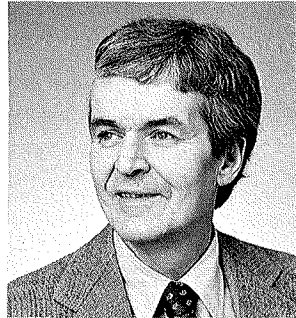
INDEX

Greetings	1
Acknowledgment	2
Board of Directors	4
Advertiser's Index.	98
Chapter Listing.	58
History of ALMACA	44
President's Report	9
Profile of Past Presidents:	
Frank W. Huddleston	21
Adolph J. "Sully" Sullivan.	23
Paul A. Sherman	25
James L. Francek	27
Restaurant Guide	30
Map of San Diego	31
San Diego Chapter History	85
Statement from Duane Rogers	87
Membership Report	85
ALMACA's First Decade, by Thomas J. Delaney, Jr.	13
Statement by Lane Kirkland	73
"The Missing Link" by Evan Leepson	90
ALMACA Code of Ethics	95

In preparing the Souvenir Journal for the 10th Annual Meeting, ALMACA solicited statements from several individuals and organizations who are involved in the occupational alcoholism field. Many of the organizations responded and their statements are printed throughout this Journal. These statements reflect the opinions of the authors and are not the policy of ALMACA.

ALMACA Board of Directors

OFFICERS



President
Edward Small, Manger
Employee Assistance Program
The New York Times
New York, NY



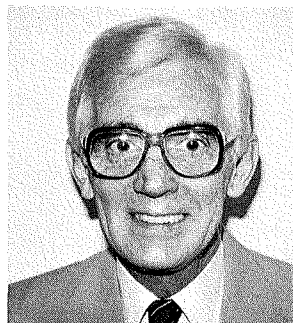
Vice President — Operations
Thomas P. O'Connor, Admin.
Rehabilitation Services
Boston Edison Co., M327
Boston, MA



Vice President — Administration
Mrs. Betty Reddy
Occupational Alcoholism Specialist
Lutheran Alcoholism Treatment Center
Park Ridge, IL



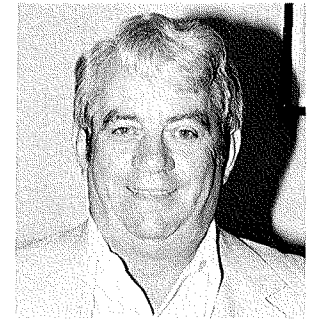
Secretary
Joan D. McCrea, Manager
Regional Employee Counseling Programs
Corporate Industrial Relations
Hughes Aircraft Company, 100/420



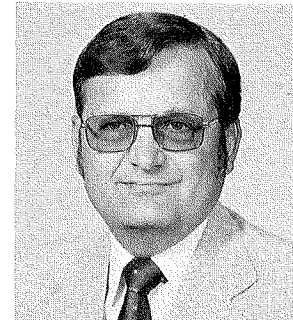
Treasurer
Peer Fossen, Manager
Medical Services, 1-135
Technical Services Center
Trans World Airlines



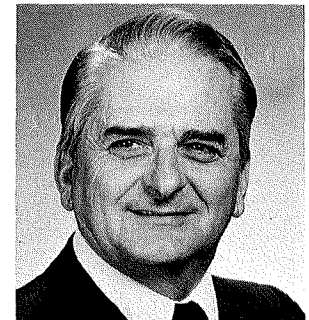
Doris T. Alexander
Womans Committee Chairperson
Director, Substance Abuse Department
A. Philip Randolph Institute
Baton Rouge, LA



R.E. "Andy" Anderson
Legislative Committee Chairperson
Project Coordinator, United Labor
Members Assistance Program
Kansas City, MO



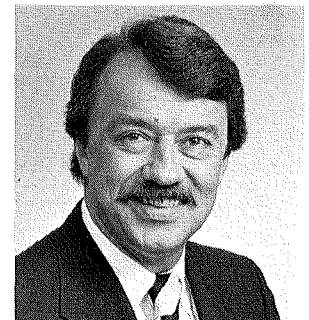
Jack W. Campbell
Membership Committee Chairperson
E.A.P. Director, Reynolds Metals Co.
Richmond, VA



Bill Combs
Annual Meeting Site Selection
Selection Committee Chairperson
Director, Alcoholism Program
District 141, I.A.M., A.W.
Belmont, CA



James L. Francek, ACSW
Ethics Committee Chairperson
(Immediate Past President)
Manager, Health Counseling
Exxon Corporation



Roger Good
Western Region Vice President
Administrator, Bechtel Power Corporation
San Francisco, CA