

MARYLAND MOBILE CRISIS AND STABILIZATION SERVICES – ESSENTIAL COMPONENTS

Recommended Children and Youth’s Essential Crisis and Stabilization Response Core Components

1. Crisis and Referral Services Hotlines and Online Resources
2. Community Response Crisis Services

What?:

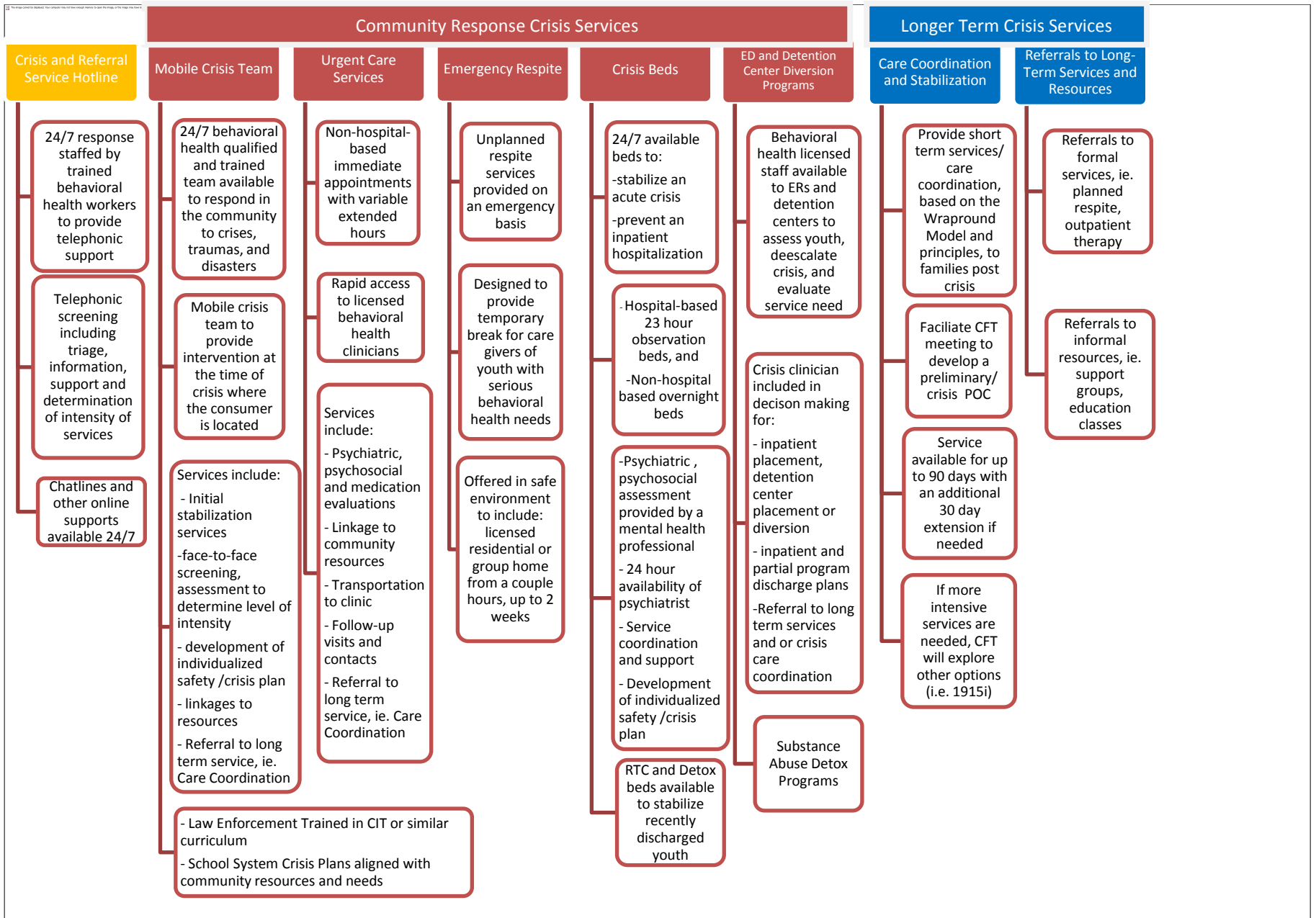
- Crisis Assessment
- Initial Stabilization

Where/How?:

- Mobile Behavioral Health and Trauma Crisis Team
- Urgent Care Services (non-hospital-based)
- Emergency respite (non-hospital based)
- Crisis beds (hospital and non-hospital-based)
- ED and Detention Center Diversion Programs (hospital-based)
- *ED/Inpatient Authorization Process (similar to Milwaukee)*

3. Longer Term Crisis/Stabilization Services
 - Care Coordination and Stabilization
 - Referrals to Long-term Services and Supports

MARYLAND MOBILE CRISIS AND STABILIZATION SERVICES – ESSENTIAL COMPONENTS



*Extensive training and social marketing plan to include schools, law enforcement, hospitals, etc. will be designed and implemented.