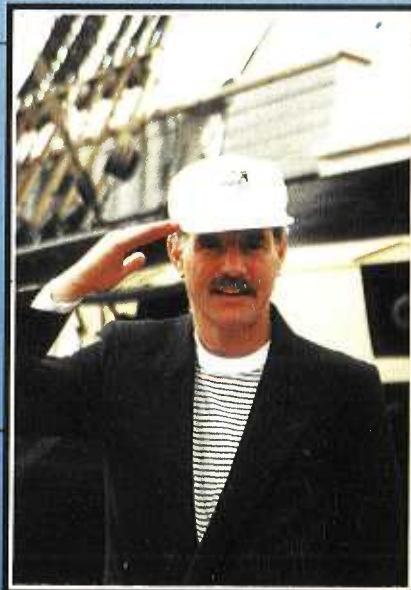


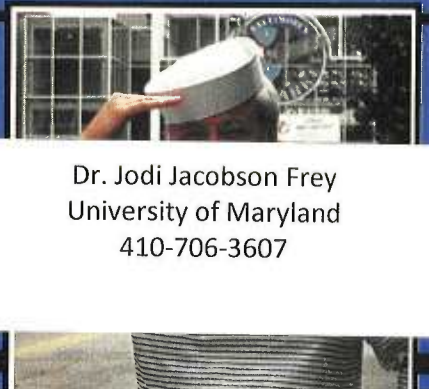
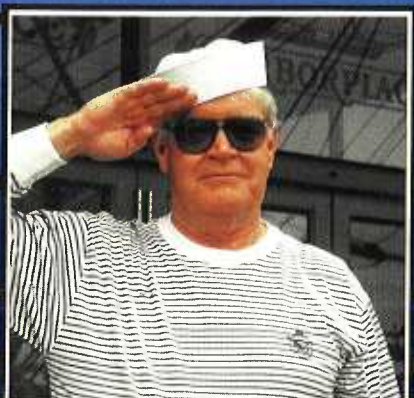
# the ALMACAN

Published monthly by Association of Labor-Management Administrators and Consultants in Education (ALMACAN) An International Association of Professionals in Employee Assistance Programs

## ⚓ EAPA's 18th National Conference Drops Anchor in Baltimore This October



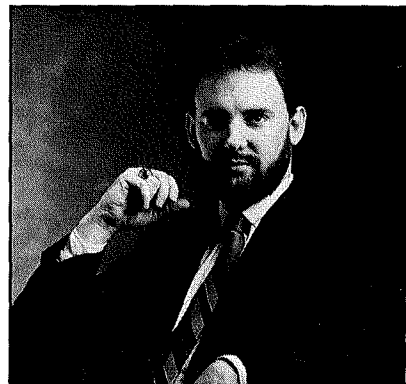
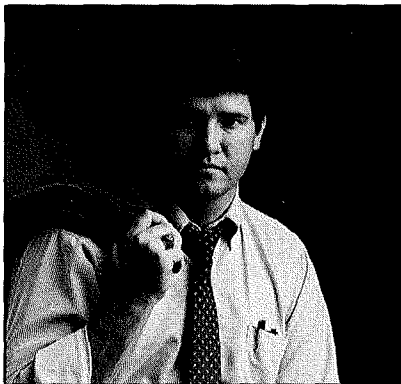
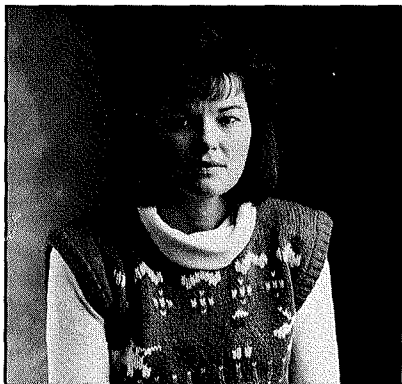
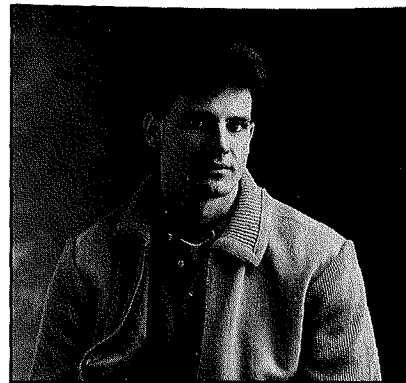
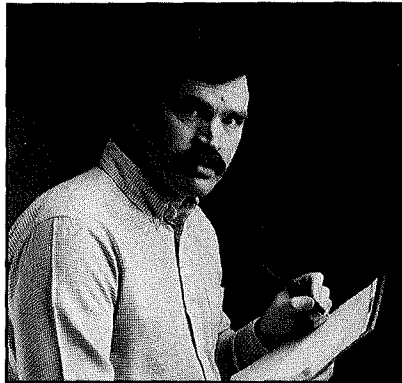
Captain O'Hair and First Mates will greet conference-goers as the Chesapeake Chapter Plays Host



Dr. Jodi Jacobson Frey  
University of Maryland  
410-706-3607



# Which one of these employees has a drug problem?



## *All of them do...*

Because if only one of these employees is a substance abuser, then all of the other employees, including you, are adversely affected as well.

Substance abuse is a major problem at many companies today. Chances are, your company either has a substance abuse problem now, or will have one in the future.

Timberlawn Psychiatric Hospital has a range of treatment options, individual and group therapy programs, and other recovery-oriented services all geared toward helping the substance abuser. An individualized evaluation

leads to selection of the most appropriate treatment program, which is further enhanced by specialized aftercare and monitoring services. Treatment team members include Board Certified psychiatrists, clinical psychologists, psychiatric social workers and substance abuse counselor specialists with certification in their field. The Twelve Step Programs are emphasized throughout the recovery process.

At Timberlawn, we understand the unique challenges faced by your company today. Call us for more information on how we can be of assistance.

## **TIMBERLAWN**

**PSYCHIATRIC HOSPITAL**

4600 SAMUELL BLVD. • P.O. BOX 11288 • DALLAS, TEXAS 75223 • (214) 381-7181

# Tuning Up for the National Conference

**THIS FALL**, EAP professionals will descend upon Baltimore, Maryland for the 18th EAPA National Conference, scheduled for October 29-November 1. Granted, the new conference name will take some getting used to, just as we are all getting comfortable with the new association name, but you can count on another quality program and entertaining gala events.

Our conference promotion this month is spread throughout a "magazine within a magazine." Our center 12 pages have been redesigned as the *EAPA National Conference Gazetteer*. We give you dozens of hard-news items and tidbits that put you in-the-know about the National Conference and aid with your planning. Here's a thought: pull out this section and keep it on top of your desk for easy reference. Do you need to know about travel arrangements? The information is in there! Or about the speakers? It's in there! Or about the special events? It's in there! Bring it to Baltimore with you as a handy reference for all the trendy places that you can frequent in your spare time.

With Baltimore as a major whistlestop on the east-coast metro circuit, where EAPA has a heavy concentration of members, we're gunning for a record turn-

out. You'll notice on pages D and E that there are presenters from all parts of the country, so we're hoping that our colleagues from the southern states, heartland and far west will make the conference a priority on their travel itineraries.

Your hosts, the Chesapeake Chapter, and those of us at National EAPA, are full of anticipation. We look forward to making your attendance at the 18th EAPA National Conference—be it for business, pleasure or both—another memory in the making.

*Rudy M. Yandrick*

**RUDY M. YANDRICK**  
EDITOR



## EAPA'S BOARD OF DIRECTORS AND STAFF

### EXECUTIVE OFFICERS

**Tom Pasco**, President  
**Tamara Cagney**  
 Vice President—Operations  
**Don Magruder**  
 Vice President—Administration  
**Marcia Nagle**, Secretary  
**Bob Challenger**, Treasurer

### REGIONAL BOARD MEMBERS

**Boyd Sturdevant**  
 Central Region Representative  
**Kevin Parker**  
 Eastern Region Representative  
**Midgie Brawley**  
 Southern Region Representative  
**Roger Wapner**  
 Western Region Representative  
**William G. Durkin**  
 International Region Representative  
**Morris Golden**  
 Canadian Region Representative

### COMMITTEE CHAIRPERSONS

**Claire Fleming**, Advisory to  
*THE ALMACAN*  
**Jane Ollendorff**, Annual Meeting  
 Site Selection  
**Jim Roth**, Bylaws  
**Jack Dolan**, Consultants  
**Jesse Bernstein**, Development  
**Daniel J. Molloy**, Education and Training  
**Gary Atkins**, Ethics  
**John Hooks**, Ethnic & Cultural Concerns  
**Sally Lipscomb**, Insurance  
**Thomas Murgitroyde**, Labor  
**Barbara Feuer**, Legislative and Public Policy  
**William O'Donnell**, Membership  
**Mary S. Bernstein**, Program Managers  
**Andrea Foote**, Research  
**Bradley Googins**, Special Projects  
**Debra Reynolds**, Standards  
**John Schwarzlose**, Treatment  
**Joanne Pilat**, Women's Issues

**Daniel Lanier**, Chairperson, Employee Assistance Certification Commission

### STAFF

**Thomas J. Delaney, Jr.**  
 Executive Director  
**Judith Evans**, Associate Director  
**Rudy M. Yandrick**, Editor

### PUBLISHED BY:

The Employee Assistance Professionals Association, Inc.  
 4601 N. Fairfax Drive  
 Suite 1001  
 Arlington, VA 22203  
 Telephone (703) 522-6272

© 1989 by Employee Assistance Professionals Association, Inc. Reproduction without written permission is expressly prohibited. Publication of signed articles does not constitute endorsement of personal views of authors.

# TABLE OF CONTENTS

## NATIONAL CONFERENCE

### EPA NATIONAL CONFERENCE GAZETTEER

Our preconference coverage is provided in this month's 12-page center spread.

## A

### EPA's 18th NATIONAL CONFERENCE DROPS ANCHOR AT BALTIMORE'S INNER HARBOR

The conference theme is "CEAP: An Emerging Profession," about Baltimore, conference highlights, lodging

## C

### YOUR HOSTS

Meet the people who are toiling hard behind the scenes to make this your best conference experience ever

## D

### THE PROGRAM PRESENTERS

A listing of the tracks and workshop titles, and the individuals who will make the presentations

## G

### SPECIAL PROGRAMS

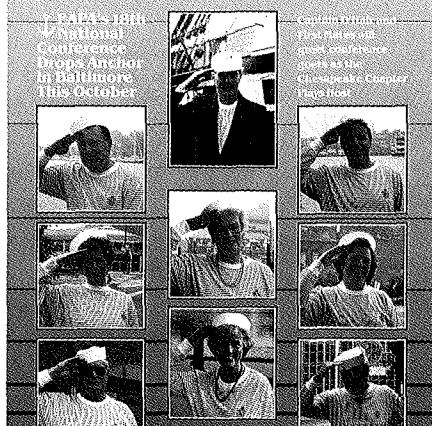
This is a listing of the various groups who will hold separate meetings under EPA's auspices

## J

### DINING GUIDE

We wet your whistle with recommended dining spots in downtown Baltimore

## the ALMACAN



Who are all of those people on the cover with Captain O'Hair? See page C of the GAZETTEER for answers.

## K

### SHOPPING GUIDE

Bring your plastic! Here's a few shopping ideas

## L

### GETTING THERE

Travel by car, plane or train. Here's how to arrive at your destination

## FEATURES

## 8

ALMACA to EPA:  
Making Forward Progress

## 10

The Legal Action Center  
Comments on the Supreme Court's  
Drug Testing Cases, State  
Legislation, and the DFWP Act  
by Margaret K. Brooks

## DEPARTMENTS

## 3

Editor's  
Comment

## 5

From the  
Executive Director

## 14

Regions and  
Chapters

## 29

Bills in  
the Hopper

## 31

ALMACA & EAP  
InfoTracks

## 42

Conferences  
& Workshops

## 43

The Business Page  
conducting your own market  
research

**38** Index of Articles  
in THE ALMACAN  
by author and subject  
July 1988-June 1989