

# what's the buzz?

*Self-Reported News from the School of Medicine Community*

## EVENTS, LECTURES



## & WORKSHOPS

*Kudos to our colleagues who are experts in their fields and give their all to represent the School of Medicine!*



William Blattner, MD

► **William Blattner, MD**, Professor of Medicine and Associate Director of the Institute of Human Virology, presented on the topic of using phylogenetics to enhance the HIV response on June 4 at a joint meeting at the New York Academy of Sciences and UNAIDS. His work, entitled “Phylogenetic Analysis of Linkage between Key and General Populations in Abuja Nigeria,” was co-authored with **Man Charurat, PhD**, Associate Professor of Medicine and Director, Division of Epidemiology and Prevention, Institute of Human Virology, and Erik Volz from the Imperial College of London. Based on mathematical modeling, they are able to monitor targeted interventions in key populations and design highly cost-effective strategies for preventing infections not only in high-risk groups but also in the general population.

► **Richard Colgan, MD**, Professor, Department of Family & Community Medicine, presented “Sir William Osler—A Servant to His Brethren: William Osler’s Influence on the University of Maryland School of Medicine and Med-Chi” at the American Oslerian Society meeting in Baltimore in May. He was invited to give the same presentation for Med Chi’s Sixth Annual Thomas E. Hunt, MD, Lecture on the History of Medicine in Maryland on June 25.

► **Samuel Galvagno Jr., DO, PhD**, Associate Professor, Department of Anesthesiology, was an invited lecturer at the Congresso Paulista de Anestesiologia (COPA) in Sao Paulo, Brazil in April. Dr. Galvagno gave three lectures: “Damage Control Resuscitation” (4/27), “Hypotensive Resuscitation” (4/28), and “Endpoints of Resuscitation” (4/29).

► **Judy LaKind, PhD**, Adjunct Associate Professor, Department of Epidemiology & Public Health, was an invited speaker at the 2015 ICCA-LRI & US EPA

Workshop “What Will Work? Application of New Approaches for Chemical Safety Assessment,” held June 16–17 in New Orleans. She presented “Exposure Science and Environmental Epidemiology: Problems and Proposed Solutions.”

► **Jacques Ravel, PhD**, Professor of Microbiology and Immunology and Associate Director, Genomics, Institute for Genome Sciences, presented, “The Vaginal Microbiota and Women’s Health” at INSERM SCHOOL, a post-Master scientific session for the MD-PharmD/PhD Program, held from March 20–22 in Paris, France.

► **Mary Rodgers, PT, PhD, FAPTA, FASB**, the George R. Hepburn Dynasplint Professor and Director of External Affairs, Department of Physical Therapy & Rehabilitation Science, presented “NIH Funding/Grant Writing” in a Careers Roundtable Discussion with students at the 39th Annual Meeting of the American Society of Biomechanics (ASB).

► **James Russell, MB, ChB, MS, FRCP, FACP**, Professor, Departments of Neurology and Anatomy & Neurobiology, recently presented “Mitochondrial Transcription Factor A Regulation of Mitochondrial Degeneration in Experimental Diabetic Neuropathy” at the Peripheral Nerve Society Biennial Meeting, in Quebec City, Canada. He also presented “Cognitive Impairment in Subject with Impaired Glucose Tolerance Improves With a Lifestyle Intervention” and “The Prevalence of Diabetes Mellitus (DM) is Increased in Older Subjects with Chronic Inflammatory Demyelinating Polyneuropathy (CIDP)” at the Neurodiab meeting in Elsinore, Denmark, and “Diabetes: The Treatable Neuropathy” at the American Diabetes Association’s 75th Scientific Sessions in Boston.



Mary Rodgers, PT, PhD,  
FAPTA, FASB



James Russell, MB, ChB,  
MS, FRCP, FACP

## EVENTS, LECTURES & WORKSHOPS *continued*

► **W. Gil Wier, PhD**, Professor, and **Jin Zhang, MD, PhD**, Associate Professor, both from the Department of Physiology, co-chaired the symposium “New Insights Into Vascular Function From In vivo Vascular Imaging” at the Experimental Biology 2015 Conference, held in Boston from March 28–April 1. Dr. Zhang, an invited speaker, also presented “Ca<sup>2+</sup> in Arteries and Arterioles of Conscious Mice: Neurogenic Components.”

► **The Program for Personalized and Genomic Medicine** is co-sponsoring the 1st International Founder Populations Conference: Discovery Research Investigating Founder Population Traits (DRIFT) Consortium, to be held October 6 at the University of Maryland. At the conference, **Toni Pollin, PhD**, Associate Professor, Department of Medicine, will present “Reducing the Complexity of Complex Traits in the Old Order Amish” and **Jeffrey O’Connell, PhD**, Associate Professor, Department of Medicine, will present “Past, Present and Future Perspectives for Understanding Human Biology.”

## APPOINTMENTS



*We applaud our colleagues on their recent appointments!*

► **Thomas Blanpied, PhD**, Associate Professor, Department of Physiology, has been appointed to a six-year term on the Synapses, Cytoskeleton and Trafficking Study Section, Center for Scientific Review, at the National Institutes of Health (NIH). Members are selected on the basis of their

demonstrated competence and achievement in their scientific discipline, as evidenced by the quality of research accomplishments, publications in scientific journals, and other significant scientific activities, achievements and honors.

► **Samuel Galvagno Jr., DO, PhD**, Associate Professor, Department of Anesthesiology, has been elected as a member of the Association of University Anesthesiologists.

► **Xiaofeng Jia, BM, PhD**, Associate Professor, Department of Neurosurgery, has been appointed a member of the Acute Neural Injury and Epilepsy Study Section, Center for Scientific Review, at NIH.



Xiaofeng Jia, BM, PhD

## NEW FACULTY



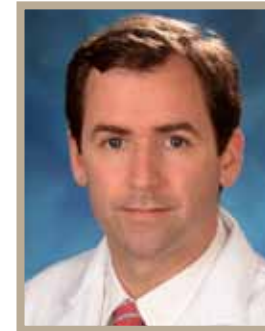
*We welcome our new faculty!*



Rafael Cires-Drouet, MD

► **Rafael Cires-Drouet, MD**, was appointed as an Assistant Professor in the Department of Medicine in July. Dr. Cires-Drouet attended medical school in Ecuador before completing internal medicine training at the University of Miami in Florida. He then underwent training in Vascular Medicine at the Cleveland Clinic in Cleveland, OH. Dr. Cires-Drouet is Board certified in Internal Medicine and Vascular Medicine and is a Registered Physician in Vascular Diagnostic Interpretation (RPVI). He is an expert in the management of peripheral arterial, venous and lymphatic diseases, and will begin his vascular medicine practice at the University of Maryland.

► **F. Lawson Grumbine, MD**, joined the Department of Ophthalmology & Visual Sciences in July as an Assistant Professor. Dr. Grumbine received his medical degree in 2009 from Jefferson Medical College in Philadelphia. He completed his Ophthalmology residency in 2013 at Emory University in Atlanta, followed by a fellowship in Ophthalmic Plastic and Reconstructive Surgery at the University of California, San Francisco in 2015. Dr. Grumbine’s practice is focused on the medical and surgical management of disorders of the eyelids, orbit (eye socket), tear drainage system, and face for adult and pediatric patients. He cares for patients with both functional and aesthetic concerns. His services include management of orbital tumors, eyelid and periocular reconstruction, repair of orbital fractures, surgery of the tear drainage system (endoscopic and open), correction of eyelid malposition, thyroid eye disease, treatment of blind painful eyes, rehabilitation of the anophthalmic socket, as well as cosmetic eyelid and facial surgery.



F. Lawson Grumbine, MD



## PUBLICATIONS

### *Hats off to those who have been published!*

► **Phil Brazio, MD**, Resident, Department of Surgery; **Min Oh, MD**, Clinical Assistant Professor, Department of Radiation Oncology; **Nelson Goldberg, MD**, Professor, and **Cherif Boutros, MB, ChB, MSc**, Associate Professor, both also from the Department of Surgery, co-authored “Large Pleomorphic Hyalinizing Angiectatic Tumor of the Forearm: A Multidisciplinary Perspective” in *Surgery*, 2015 Jun 4 [Epub ahead of print].

► **Man Charurat, PhD**, Associate Professor of Medicine and Director of the Division of Epidemiology and Prevention, Institute of Human Virology; **Rebecca Nowak, PhD**, Assistant Professor of Epidemiology & Public Health, Institute of Human Virology; and **William Blattner, MD**, Professor of Medicine and Associate Director of the Institute of Human Virology, were among the co-authors on “The Immediate Effect of the Same-Sex Marriage Prohibition Act on Stigma, Discrimination, and Engagement on HIV Prevention and Treatment Services in Men Who Have Sex with Men in Nigeria: Analysis of Prospective Data From the TRUST Cohort” in *The Lancet*, 2015 Jul;2(7):e299-e306; “Evaluating Respondent-Driven Sampling as an Implementation Tool for Universal Coverage of Antiretroviral Studies Among Men Who Have Sex With Men Living With HIV” in *JAIDS (Journal of Acquired Immune Deficiency Syndrome)*, 2015 Mar 1;68 Suppl 2:S107-113; and “Uptake of Treatment as Prevention for HIV and Continuum of Care Among HIV-Positive Men Who Have Sex with Men in Nigeria” in *JAIDS*, 2015 Mar 1;68 Suppl 2:S114-123.



Rose Chasm, MD

► **Rose Chasm, MD**, Assistant Professor, and **Y. Veronica Pei, MD, MPH, MEd**, Clinical Assistant Professor, both from the Department of Emergency Medicine, were the lead authors on “Sex Differences in Risk of Hospitalization Among Emergency Department Patients with Acute Asthma” in *Annals of Allergy, Asthma, and Immunology*, 2015 Jul;115(1):70-2.e1. This report was based on a study by the Multicenter Airway Research Collaboration (MARC), involving 2000 patients treated in 48 academic and community hospital emergency departments. Its findings are strikingly similar to those published by the MARC in 1999: Women remain at higher risk of hospitalization than men following an exacerbation, even though they are more likely to be under the care of an asthma specialist and to

be following guideline-recommended pathways for the long-term management of asthma.

► **Chris D’Adamo, PhD**, Assistant Professor, Department of Family & Community Medicine and the Center for Integrative Medicine, was lead author on “Spice My Plate: Nutrition Education Focusing Upon Spices and Herbs Improved Diet Quality and Attitudes Among Urban High School Students” in *American Journal of Health Promotion*, 2015 Jul 9 [Epub ahead of print]. **Brian Berman, MD**, Professor, Department of Family & Community Medicine, and Director, Center for Integrative Medicine, was among the co-authors.

► **Colleen Hughes Driscoll, MD**, Assistant Professor, Department of Pediatrics, was a co-author on the chapter “Transient Tachypnea of the Newborn” in *5–Minute Pediatric Consult, 7th Edition*, published by Cabana MD in May.

► **Aletta Frazier, MD**, Clinical Associate Professor, Department of Diagnostic Radiology & Nuclear Medicine, authored “Selected Infections of the CNS” in *Radiographics*, 2015 Jul–Aug;35(4):1140.



Colleen Hughes Driscoll, MD



Jeffrey Galvin, MD

► **Jeffrey Galvin, MD**, Professor, Department of Diagnostic Radiology & Nuclear Medicine, was among the co-authors on “Permanent Alveolar Collapse is the Predominant Mechanism in Idiopathic Pulmonary Fibrosis” in *Expert Review of Respiratory Medicine*, 2015 Aug;9(4):411-8.

► **Stephen Gottlieb, MD**, Professor, Department of Medicine, and **Vasken Dilsizian, MD**, Professor, Department of Diagnostic Radiology & Nuclear Medicine, published a multi-author collaborative paper on the basis of data from the NIH R01 Grant “Biobehavioral Precipitating Factors in Heart Failure.” The paper, entitled “High Concordance Between Mental Stress-Induced and Adenosine-Induced Myocardial Ischemia Assessed Using SPECT in Heart Failure Patients: Hemodynamic and Biomarker Correlates” was published in *Journal of*



Stephen Gottlieb, MD

## PUBLICATIONS *continued*

*Nuclear Medicine*, 2015; Jul 23 [Epub ahead of print].

► **Bryan Hayes, PharmD**, Clinical Assistant Professor, Department of Emergency Medicine, was the lead author on “Social Media in the Emergency Medicine Residency Curriculum: Social Media Responses to the Residents’ Perspective Article” in the *Annals of Emergency Medicine*, 2015 May;65(5):573-83. This report categorized and tabulated a 14-day online discussion of an article on the integration of social media into the emergency medicine residency curriculum. It drew 1,033 unique visitors from 32 countries. The authors concluded that online interactions such as the one they studied hold great potential for dissemination of knowledge and the generation of hypotheses for future research. The article was highlighted as an Editor’s Choice for Clinicians.

► **Tracy Hazen, PhD**, Research Associate; **Sean Daugherty, Sr.**, Bioinformatics Analyst; **Amol Shetty, Sr.**, Bioinformatics Software Engineer; **Anup Mahurkar**, Executive Director, Software Engineering & IT; **Owen White, PhD**, Professor of Epidemiology & Public Health, Co-Director, Center for Health-Related Informatics and Bioimaging, and Associate Director, Institute for Genome Sciences; and **David Rasko, PhD**, Associate Professor of Microbiology & Immunology, all from the Institute for Genome Sciences, were among the co-authors on “RNA-Seq Analysis of Isolate- and Growth Phase-Specific Differences in the Global Transcriptomes of Enteropathogenic *Escherichia coli* Prototype Isolates” in *Frontiers in Microbiology*, 2015 Jun 12;6:569.

► **Jon Mark Hirshon, MD, MPH, PhD**, Professor, Department of Emergency Medicine, and **Maureen McCunn, MD, MIPP**, Associate Professor, Department of Anesthesiology, were among the co-authors on “Developing Sustainable Trauma Care Education in Egypt: Sequential Trauma Education Program, Steps to Success” in *Journal of Surgical Education*, 2015 Jul-Aug;72(4):e29-32. The article focuses on the practical, hands-on trauma care training course that was developed by Shock Trauma physicians at the University of Maryland 10 years ago and then introduced to the Egyptian Ministry of Health and Population and Ain Shams University in Cairo in 2006. To date, 639 physicians from multiple specialties have taken the four-day course, which has been adopted by the Egyptian Emergency Medicine Board and is required training at several Egyptian medical schools.



Jon Mark Hirshon, MD,  
MPH, PhD

► **Judy LaKind, PhD**, Adjunct Associate Professor, Department of Epidemiology & Public Health, was the first author on “Temporal Trends in Bisphenol A Exposure in the United States from 2003-2012 and Factors Associated With BPA Exposure: Spot Samples and Urine Dilution Complicate Data Interpretation” in *Environmental Research*, 2015 Jun 25;142:84-95.

► **Mu-Han Lin, PhD**, Assistant Professor, Department of Radiation Oncology, was the lead author on “Robotic Radiosurgery System Patient-Specific QA for Extra-Cranial Treatments Using the Planar Ion Chamber Array and the Cylindrical Diode Array” in *Journal of Applied Clinical Medical Physics*, 2015 Jul 8;16(4):5486.

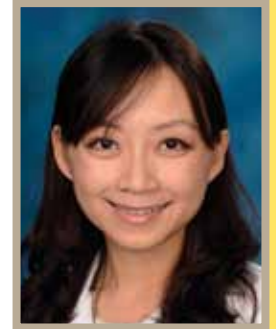


Minesh Mehta, MB, ChB

► **Minesh Mehta, MB, ChB**, Professor, Department of Radiation Oncology, was among the authors on “Management of Solitary and Multiple Brain Metastases From Breast Cancer” in *Indian Journal of Medical and Paediatric Oncology*, 2015 Apr-Jun;36(2):87-93. He was also among the co-authors on “Response Assessment in Neuro-Oncology (RANO) Group – Response Assessment Criteria for Brain Metastases: Proposal From the RANO Group” in *Lancet Oncology*, 2015 Jun;16(6):e270–e278), and on “Strategies For Preservation of Memory Function in Patients with Brain Metastases” in *Chinese Clinical Oncology*, Jun 2015;4(2):24. He was the sole author on “The Controversy Surrounding the Use of Whole-Brain Radiotherapy in Brain Metastases Patients” in *Neuro-Oncology*, 2015 Jul;17(7):919–923, and was among the co-authors on “Phase II Trial of Pre-Irradiation and Concurrent Temozolomide in Patients With Newly Diagnosed Anaplastic Oligodendrogliomas and Mixed Anaplastic Oligoastrocytomas: Long Term Results of RTOG BR0131” in *Journal of Neuro-Oncology*, 2015 Jun 19 [Epub ahead of print].

► **Mark Mishra, MD**, Assistant Professor, Department of Radiation Oncology, was among the co-authors on “Evaluation of Brachytherapy and External Beam Radiation Therapy for Early Stage, Node-Negative Uterine Carcinosarcoma” in *Brachytherapy*, 2015 Sep-Oct;14(5):606-12.

► **Pranshu Mohindra, MD**, Assistant Professor, Department of Radiation Oncology, was among the co-authors on “Multifunctional Hyperthermia Cancer Treatment” in *Nanoscale*, 2015 Aug 7;7(29):12728–12736.



Mu-Han Lin, PhD

## PUBLICATIONS *continued*

► **Emmanuel Mongodin, PhD**, Assistant Professor of Microbiology & Immunology, Institute for Genome Sciences, and **Claire Fraser, PhD**, Professor, Departments of Medicine, Microbiology & Immunology, and Director, Institute for Genome Sciences, co-authored the article “Potential Influence of *Staphylococcus aureus* Clonal Complex 30 Genotype and Transcriptome on Hematogenous Infections” in *Open Forum of Infectious Diseases*, 2015 Jun 24;2(3):ofv093.

► **Alfred Papali, MD**, Assistant Professor, Department of Medicine; **Michael McCurdy, MD**, Assistant Professor, Departments of Medicine and Emergency Medicine; and **Emilie Calvello, MD, MPH**, Clinical Assistant Professor, Department of Emergency Medicine, co-authored “A ‘Three-Delays’ Model for Severe Sepsis in Resource-Limited Countries” in *Journal of Critical Care*, 2015 Aug;30[4]:861.e9-861.e14. Drawing from the “three-delays” model used by numerous global health organizations to create policies and programs for the reduction of perinatal mortality, the authors propose a similar framework designed to confront the alarming mortality rates associated with severe sepsis and septic shock in developing countries.

► **Palak Parekh, MD**, Postdoctoral Fellow, Program in Oncology; **Navesh Sharma, DO, PhD**, Assistant Professor, and **France Carrier, PhD**, Associate Professor, both from the Department of Radiation Oncology, were among the co-authors on “Contribution of Dual Oxidase 2 (DUOX2) to Hyper-Radiosensitivity in Human Gastric Cancer Cells” in *Radiation Research*, 2015 Aug;184(2):151-60.

► **Michelle Pearce, PhD**, Assistant Professor, Department of Family & Community Medicine and the Center for Integrative Medicine, was among the co-authors on “Effects of Religious Versus Standard Cognitive-Behavioral Therapy on Optimism in Persons with Major Depression and Chronic Medical Illness” in *Depression and Anxiety*, 2015 Jul 28 [Epub ahead of print]. She was also among the co-authors on “Why Religion Needs a Seat at Psychotherapy’s Table” in *The Society for the Advancement of Psychotherapy*, 2015 Aug.

► **Jacques Ravel, PhD**, Professor, Microbiology & Immunology, Associate Director, Genomics, Institute for Genome Sciences, was among the co-authors on “Penile Microbiota and Female Partner Bacterial Vaginosis in Rakai, Uganda” in *MBio*. 2015 Jun 16;6(3).



Michelle Pearce, PhD

► **William Regine, MD**, Professor and the Isadore & Fannie Schneider Foxman Chair in the Department of Radiation Oncology, was among the co-authors on “Glycogen Synthase Kinase 3 $\beta$  Predicts Survival in Adenocarcinoma of the Pancreas” in *Clinical Cancer Research*, 2015 Aug 15 [Epub ahead of print].

► **Jason Sahl, PhD**, former Postdoctoral Fellow in the Rasko Lab, and **David Rasko, PhD**, Associate Professor of Microbiology & Immunology, Institute for Genome Sciences, were among the co-authors on “Phylogenetically Typing Bacterial Strains From Partial SNP Genotypes Observed From Direct Sequencing of Clinical Specimen Metagenomic Data” in *Genome Medicine*, 2015 Jun 9;7(1):52.

► **Lynn Schriml, PhD**, Assistant Professor, Department of Epidemiology & Public Health, and **Elvira Mtraka, PhD**, Postdoctoral Fellow, Schriml Lab, both from the Institute for Genome Sciences, co-authored “The Disease Ontology: Fostering Interoperability Between Biological and Clinical Human Disease-Related Data” in *Mammalian Genome*, 2015 Jun 21 [Epub ahead of print].

► **Nina Semsarzadeh, MS-III**, and **Devinder Singh, MD**, Associate Professor, Department of Surgery, were among the co-authors on “Closed Incision Negative Pressure Therapy is Associated with Decreased Surgical Site Infections: A Meta-Analysis” in *Plastic and Reconstructive Surgery*, 2015 Sep;136(3):592-602.

► **Terez Shea-Donohue, PhD**, Professor, and **Rex Sun**, Graduate Student, both from the Department of Radiation Oncology, and **Leon McLean, MD, MPH, PhD**, Assistant Professor, Department of Medicine, were among the co-authors on “Enteric Nematodes and the Path to Up-Regulation of Type 2 Cytokines IL-4 and IL-13” in *Cytokine*, 2015 Sep;75(1):62-7.

► **Eliot Siegel, MD**, Professor, Department of Diagnostic Radiology & Nuclear Medicine, was among the co-authors on “Patient Engagement: The Experience of the RSNA Image Share Patient Help Desk” in *Journal of the American College of Radiology*, 2015 Jul 9 [Epub ahead of print].

► **Henry Silverman, MD, MA**, Professor, Department of Medicine, and **Samer El-Kamary, MB, ChB, MPH**, Associate Professor, Department of Epidemiology &



William Regine, MD



Lynn Schriml, PhD

## PUBLICATIONS *continued*

Public Health, were among the co-authors on “Investigating the Informed Consent Process, Therapeutic Misconception and Motivations of Egyptian Research Participants: A Qualitative Pilot Study” in *Eastern Mediterranean Health Journal*, 2015 May 19;21(3):155-63. Dr. El-Kamary was first author, and **Mohamed Hashem, MBBCh**, Assistant Professor, Department of Epidemiology & Public Health, was a co-author on “Reliability of Risk-Based Screening for Hepatitis C Virus Infection Among Pregnant Women in Egypt” in *Journal of Infection*, 2015 May;70(5):512-9.

▶ **Charles White, MD**, Professor, Department of Diagnostic Radiology & Nuclear Medicine, was among the co-authors on “Prospective Randomized Trial on Radiation Dose Estimates of CT Angiography Applying Iterative Image Reconstruction: The PROTECTION V Study” in *JACC Cardiovascular Imaging*, 2015 Jul 9 [Epub ahead of print].

▶ **Claudia Witt, MD, MBA**, Professor, Department of Family & Community Medicine and the Center for Integrative Medicine, was among the co-authors on “Can Additional Homeopathic Treatment Save Costs? A Retrospective Cost-Analysis Based on 44500 Insured Persons” in *PLoS One*, 2015 Jul 31;10(7):e0134657.

▶ **Jinghao Zhou, PhD**, Assistant Professor; **Giovanni Lasio, PhD**, Assistant Professor; **Baoshe Zhang, PhD**, Assistant Professor; **Navesh Sharma, DO, PhD**, Assistant Professor; **Karl Prado, PhD**, Professor; and **Warren D’Souza, PhD, MBA**, Professor, all from the Department of Radiation Oncology, were among the co-authors on “Automated Compromised Right Lung Segmentation Method Using a Robust Atlas-Based Active Volume Model With Sparse Shape Composition Prior in CT” in *Computerized Medical Imaging and Graphics*, 2015 Jun 19 [Epub ahead of print].

▶ **Jiachen Zhuo, PhD**, Assistant Professor; **Steven Roys, MS**, Research Associate; and **Rao Gullapalli, PhD, MBA**, Professor, all from the Department of Diagnostic Radiology & Nuclear Medicine, were among the co-authors on “Hyper-Connectivity of the Thalamus During Early Stages Following Mild Traumatic Brain Injury” in *Brain Imaging Behavior*, 2015 Jul 8 [Epub ahead of print].

▶ **Lindsay Zilliox, MD**, Assistant Professor, Department of Neurology; **Sandra Ruby, MD**, Former Fellow, Department of Neurology, Clinical Neurophysiology EMG Division; **Sujal Singh, MS**, Research Coordinator; **Min Zhan, MD**, Associate

Professor, Department of Epidemiology & Public Health; and **James Russell, MB, ChB, MS, FRCP, FACP**, Professor, Departments of Neurology and Anatomy & Neurobiology, were among the co-authors on “Clinical Neuropathy Scales in Neuropathy Associated With Impaired Glucose Tolerance” in *Journal of Diabetes and Its Complications*, 2015 Apr;29(3):372-377. Dr. Russell and **Krish Chandrasekaran, PhD**, Assistant Professor, Departments of Neurology and Anatomy & Neurobiology; **Anjaneyulu Muragundla, PhD**, Postdoctoral Fellow; Tatsuya Inoue, PhD, Postdoctoral Fellow; **Joungil Choi, PhD**, Research Scientist; and **Avinash Rao Sagi, MD**, Postdoctoral Fellow, all from the Department of Neurology, and **Chen Chen, MD**, Former Fellow, Department of Neurology, Clinical Neurophysiology EMG Division, were among the co-authors on “Mitochondrial Transcription Factor A Regulation of Mitochondrial Degeneration in Experimental Diabetic Neuropathy” in *American Journal of Physiology: Endocrinology and Metabolism*, 2015 Jul 15;309(2):E132-41.

## IN THE NEWS



*A job well done to all who have kept us in the media spotlight!*

▶ **Chris D’Adamo, PhD**, Assistant Professor, Department of Family & Community Medicine and the Center for Integrative Medicine, was an expert interviewed by Lynn Allison for “Cancer: Tipping the Odds in Your Favor” in the Healthy Living section of the July 2015 issue of *Newsmax*.

▶ **John Reed, MD, MDiv**, Assistant Professor, Department of Family & Community Medicine and the Center for Integrative Medicine, was an expert interviewed by Amy Norton for “Taking St. John’s Wart for Depression Carries Risks: Study,” an article published on July 29 by *HealthDay*. He was also quoted in the *NewsMax Health* article “Conventional or Alternative Treatment: How to Know Which to Choose,” which originally ran in print in March and went online on July 10.

▶ **Mary-Claire Roghmann, MD, MS**, Professor, Department of Epidemiology & Public Health, had her study “Targeted Infection Program Decreases MRSA, UTI Transmissions in Nursing Homes” featured on *healio.com* on July 7. The story can be found at: [umm.gd/1S8dbqT](http://umm.gd/1S8dbqT).



Lindsay Zilliox, MD



Mary-Claire Roghmann, MD, MS

## GRANTS &amp;

## CONTRACTS



*Congratulations to our very productive faculty on their recent grants and contracts!*

► **Man Charurat, PhD**, Associate Professor of Medicine and Director, Division of Epidemiology and Prevention at the Institute of Human Virology, and **William Blattner, MD**, Professor of Medicine and Associate Director of the Institute of Human Virology, were awarded a \$3.1 million NIH R01 grant entitled “Building TRUST.” The study employs the Social Ecological Model (SEM) to longitudinally collect individual, interpersonal and environmental data targeting a “hotspot” Men having Sex with Men cohort and integrates phylodynamic modeling to gain insights about the drivers of ineffective HIV prevention and treatment outcomes in Nigeria. Drs. Blattner and Charurat were also awarded a \$112,247 Global Fund sub-contract to study the phylogenetic analysis of patterns and linkages among and between key and general populations in Nigeria.

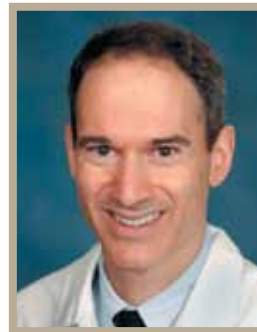


Wilber Chen, MD

► **Wilber Chen, MD**, Associate Professor of Medicine, Center for Vaccine Development, received a \$2.7 million grant from the National Institute of Allergy and Infectious Diseases for “A Phase 1 Double-Blind Placebo-Control Dose Escalating Study to Evaluate the Safety and Immunogenicity of Double Mutant Heat-Labile Toxin LTR192G/L211A (dmLT) From Enterotoxigenic *Escherichia coli* (ETEC) by Intradermal (ID) Vaccination in Healthy Adults.”

► **Christopher deFilippi, MD**, Associate Professor, Department of Medicine, received a \$120,449 grant from Nanomix Inc. for “Nanomix eLab (TM) Troponin I Assay eLab (TM) System.”

► **Timm-Michael Dickfeld, MD, PhD, FACC, FHRS**, Associate Professor, Department of Medicine, received a \$41,600 grant from GE for “Three Dimensional Neuro-Cardiac Imaging Using 1123-metaiodobenzylguanidine Single Photon Emission Computed Tomography and Planar Imaging to Guide Premature Ventricular Contraction Ablation,” and a \$25,200 grant from a NIH R21/sub-award via the University of Maryland, College Park for



Christopher deFilippi, MD

“Identification of AF Ablation Targets via a Steerable Actuated Catheter.”

► **Michael Donnberg, MD**, Professor, Department of Medicine, received a five-year, \$1,936,800 grant from the National Institute for General Medical Sciences (NIGMS) for the Medical Scientist Training Program training grant, which helps fund the MD-PhD program. He also received a \$275,000 grant from the National Institute for Allergy and Infectious Diseases (NIAID) for “Novel Antimicrobials Targeting Type IV Pilus and Type 2 Secretion Systems.”



Michael Donnberg, MD

► **Brian Johnson**, PhD Student, Department of Physical Therapy & Rehabilitation Science, received a Qualtrics Behavioral Research Grant from Qualtrics.com, which will provide up to \$3,000 for the project “Development and Testing of a Bimanual Assessment Measure (BAM),” which he is working on with **Kelly Westlake, PhD, MSc, PT**, Assistant Professor; **Jill Whitall, PhD**, Professor; and **Sandra McCombe Waller, PT, PhD, MS, NCS**, Associate Professor, all from the Department of Physical Therapy & Rehabilitation Science.



Sanjay Rajagopalan, MBBS, FACC, FAHA

► **Sanjay Rajagopalan, MBBS, FACC, FAHA**, the Melvin Sharoky Endowed Professor in Cardiovascular Medicine, Department of Medicine, received a \$2,979,624 grant from the NIH for “EXercise MRI Evaluation of HIV-PAH Longitudinal Determinants (EXHALTED).”

► **Anastasios Saliaris, MB, BCh, BAO**, Assistant Professor, Department of Medicine, received a St. Jude Medical Fellowship Grant for \$15,750.

► **Owen Woodward, PhD**, Assistant Professor, Department of Physiology, received a one-year, \$180,382 grant from Ardea Biosciences Inc. for “Identifying Therapeutic Targets in Urate Transporter ABCG2.”

► **Jixin Zhong, MD**, Assistant Professor, Department of Medicine, received a \$77,000 grant from the American Heart Association for “DPP4 Links Lipidemia and Inflammation.”



Owen Woodward, PhD

## HONORS & AWARDS



*Congratulations to the following who have received honors!*



Samuel Galvagno Jr., DO, PhD

- ▶ **Samuel Galvagno Jr., DO, PhD**, Associate Professor, Department of Anesthesiology, was awarded a Meritorious Service Medal with first oak leaf cluster from the United States Air Force for his recent deployment to the Combined Joint Task Force, Horn of Africa (Operation Enduring Freedom).
- ▶ **Carl Mansfield, MD, ScD, FASTRO**, former Chairman of the Department of Radiation Oncology, has been selected to receive the 2015 ASTRO Gold Medal. The Gold Medal, ASTRO's highest honor, recognizes distinguished members who have

made outstanding contributions to the field of radiation oncology, including research, clinical care, teaching and service. Dr. Mansfield is an Emeritus Professor and former Chair of the departments of Radiation Oncology at the University of Kansas and Thomas Jefferson University Hospital, as well. The awardees will receive their ASTRO Gold Medals at the Awards Ceremony

at the 57th Annual Meeting, to be held October 18–21 at the Henry B. Gonzalez Convention Center in San Antonio, TX. The Department of Radiation Oncology will celebrate Dr. Mansfield and his award at an Alumni and Friends event at the Hotel Contessa in San Antonio on October 18.

- ▶ **Jacques Ravel, PhD**, Professor, Department of Microbiology & Immunology, Associate Director, Genomics, Institute for Genome Sciences has been selected as one of the twelve University System of Maryland's PROMISE AGEP Association for Graduate Education and the Professoriate) Outstanding Faculty Mentors for 2015–2016.



Jacques Ravel, PhD

- ▶ **Quincy Tran, MD, PhD**, Assistant Professor, Department of Emergency Medicine, has been awarded a scholarship to the Emergency Medicine Basic Research Skills Workshop by the Emergency Medicine Foundation, based in Dallas. The 11-day course covers the full spectrum of research endeavors—from idea and IRB approval through presentation and publication.

## Research Communications Network

Many thanks to the following people who serve as your liaisons for the information you see in *What's the Buzz?* Please send information (within the realm of the categories listed here) that you would like to see in the *Buzz* to the appropriate person within your department, program, center or office.

**Anatomy & Neurobiology:**  
Kristie Nichols

**Anesthesiology:** Pamela Earle-Jackson

**Biochemistry & Molecular Biology:**  
Qun Zhou

**Dermatology:** Betsy Satosky

**Diagnostic Radiology & Nuclear Medicine:** Brigitte Pocta

**Emergency Medicine:**  
Linda Kesselring

**Epidemiology & Preventive Medicine:** Yimei Wu

**Family & Community Medicine:**  
Karen Webster

**Medical & Research Technology:**  
Cynthia Stambach

**Medicine:** Molly Lutz

**Microbiology & Immunology:**  
Teri Robinson

**Neurology:** Penelope Birkhead

**Neurosurgery:** Mari Jo Pohlner

**Obstetrics, Gynecology & Reproductive Sciences:** Robin Kissinger

**Ophthalmology:** Chinneta Pettaway-Willis

**Orthopaedics:** Dori Kelly

**Otorhinolaryngology:** Bryan Ambro

**Pathology:** Rob Christenson

**Pediatrics:** Denise Hansen

**Pharmacology:** Stacey Lukasik

**Physical Therapy & Rehabilitation Science:** Monica Martinez

**Physiology:** Ken Fahnestock

**Psychiatry:** Vee Porter-Brown

**Radiation Oncology:** Jill Rosenberg

**Surgery:** Meghan Scalea

**Program in Comparative Medicine:**  
Deborah Sanchez

**Program for Personalized & Genomic Medicine:** Ruth Cosentino

**Program in Neuroscience:** Tom McHugh

**Program in Oncology:** Robert Mitchell

**Program in Trauma:** Jane Anderson

**Program in Health Disparities & Population Health:** TBD

**Center for Biomedical Engineering and Technology:** Pamela B. Wright

**Center for Integrative Medicine:**  
Rebekah Owens

**Center for Research on Aging:**  
Kara Longo

**Center for Shock, Trauma and Anesthesiology Research (STAR-ORC):**  
Gabriela Felton

**Center for Stem Cell Biology & Regenerative Medicine:**  
Fulscia Morrison

**Center for Vaccine Development:**  
Staci Eddington

**Center for Vascular & Inflammatory Diseases:** Talia Bailey

**Institute for Genome Sciences:**  
Riham Keryakos

**Institute of Human Virology:**  
Nora Grannell

**MD/PhD Program:** Jane Bacon

**Office of Admissions:** Mickey Foxwell

**Office of Development:**  
Rebecca Herman

**Office of Faculty Affairs & Professional Development:**  
Robertha Simpson

**Office of Information Services:**  
Sharon Bowser

**Office of Public Affairs:**  
Caelie Haines

**Office of Research Career Development:** Stacie Small Mendoza

**Office of Research & Graduate Studies:** Terry Rogers

**Office of Student Affairs:**  
Dawn Roberts

**Office of Student Research:**  
Jean Marie Roth

Attention all SOM Medical, Allied Health and Graduate Students!

**Buzz Information Link for Students**

A hyperlink is available on the School of Medicine Website for you to submit information to the *Buzz* to acknowledge honors, prizes, presentations, leadership positions and other noteworthy accomplishments. Go to: [http://medschool.umaryland.edu/Public\\_Affairs/buzz.asp](http://medschool.umaryland.edu/Public_Affairs/buzz.asp)