

Maryland Mentor

A NEWSLETTER FOR THE MARYLAND ACADEMY OF PRECEPTORS

Fall 2013

IN THIS ISSUE

Message from the Assistant
Dean for Experiential Learning

New Members of the Maryland
Academy of Preceptors

Updates

Free Online CE course

New to ELP

Policy News

Contact Us

Experiential Learning Office
Pharmacy Hall,
20 N. Pine Street, Suite 730
Baltimore, MD 21201
410-706-2432 *phone*
410-706-0988 *fax*
elp@rx.umaryland.edu

From the Assistant Dean for Experiential Learning

Dear preceptors,

Fall is here and with the change in season comes slight changes in how we conduct business. The School is undergoing curricular refinement: the Experiential Learning Program (ELP) has added Transitions of Care, Practice Based Research, and Medication Therapy Management (MTM) to our list of experiential course offerings, and the Experiential Learning Committee has been charged with reviewing and updating the experiential course syllabi. Associate professors Chanel Agness, PharmD, chair, and Deb Sturpe, PharmD, vice-chair, are leading this committee during the 2013-2014 academic year. Expect to see updates on their numerous charges, including the preceptor promotion process, in future editions of *Maryland Mentor*.



I am very appreciative of the suggestions, kind words, and feedback provided to the office via emails, phone calls, surveys, and during site visits. Please keep them coming as it enables us to provide high quality services to you and your site. Based on recent feedback, we are pleased to inform you that we plan to provide our preceptors who precept two or more students with summary evaluations twice a year beginning this year. Our hope is that this information will allow you to continue to provide excellent teaching and/or to make any adjustments to your rotation as appropriate.

Thank you again for all you do for the University of Maryland School of Pharmacy and our students. We are very fortunate to have you as part of our Maryland Academy of Preceptors! Please let me know if we can address any questions you may have.

Your colleague,

Toyin Tofade, MS, PharmD, BCPS, CPCC
Associate Professor of Pharmacy Practice and Science
Assistant Dean for Experiential Learning

New Maryland Academy of Preceptors Members

We welcome these preceptors who were recently appointed by Dean Eddington to the Maryland Academy of Preceptors.

- Brooke Ade, PharmD
- Mikhail Arthur, PharmD
- Lilian Alade, PharmD
- Ebony Ayres, PharmD
- Amit Balrishnan, BSP, PhD
- Heather Dworski, PharmD
- Sara Eltaki, PharmD, BCPS
- Lacy Fabian, PhD
- Ankit Ghodasara, PharmD
- Jessica Holstein, PharmD
- Sarah Kang, PharmD
- Jenna Klempay, PharmD
- Brian Masters, PharmD
- Taryn Merchant, PharmD
- Andrew Michaelson, PharmD
- Kelly Shaner Miller, PharmD, MS

Updates

Scheduling Request

We are requesting P4 availability for the Class of 2015 in December 2013, so please keep an eye out for any emails regarding availability.

Agreement Updates

ELP will be utilizing a new Standard Affiliate Agreement for its rotation sites. It has been over seven years since the last update. ELP found it necessary to update its Standard Affiliate Agreement to reflect the changes in the health care industry. All previously executed agreements will not be affected. However, going forward, ELP will be utilizing the new Standard Affiliated Agreements. Please direct all questions regarding affiliation agreements to Scott Yoo, Esq., contracts and grants specialist, at syoo@rx.umaryland.edu.

- Jennifer O'Rangers, BSP
- Chukwuma Obi, PharmD
- Bijal Patel, PharmD
- Camryn Perry, BSP
- Holly Petraglia, PharmD
- Wallace Pickworth, BSP, PhD
- Shamika Pryor, PharmD
- Hee-Jung Pyun, PharmD
- Derek Rhodes, PharmD, BCPS
- Faith (Thutrang) Sambuco, PharmD
- Prahmarsh Shah, PharmD
- Susan Shermock, PharmD
- Pinett Siek, PharmD
- Amanda Sowell, PharmD
- Sejal Thakkar, PharmD
- Namrata Trivedi, PharmD
- Julie Waldfogel, PharmD, CPE
- Cathy Walker, RPh
- Ryan Whisler, PharmD

Free CE Credits Exclusively for Maryland Academy of Preceptors

Thank you for sharing your knowledge as a preceptor with the students at the University of Maryland School of Pharmacy. We are proud of the role preceptors play in guiding and supporting our aspiring professionals.

In appreciation of all you do, we are providing School of Pharmacy preceptors with free continuing education credits for the course, "Asthma Devices and the Health Care Professional Series," through our Knowledge Enterprise.



The School's Center for Innovative Pharmacy Solutions (CIPS) Knowledge Enterprise brings you practice-based online modules, resources, practice tools, and placebo devices you can use to teach your students. You can also access the course anytime, anywhere, even from your mobile device.

Only School of Pharmacy preceptors are eligible for these five hours of free CE, which must be used by Dec. 15, 2013. This program is funded by the Maryland Department of Health and Mental Hygiene.

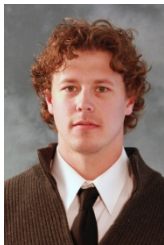
Visit <http://www.pharmacists4knowledge.org/cips/courses/view/37> to enroll in the "Asthma Devices and the Health Care Professional Series."

For more information, contact CIPS at cips@rx.umaryland.edu or 410-706-6067.

www.pharmacists4knowledge.org



New ELP Staff



Bryan Rewers has joined the ELP team as an academic program specialist. Bryan previously worked with the ELP office on a temporary basis.

Bryan handles all preceptor-related processes such as, application packets, preceptor evaluations, site visit scheduling, coordinating exhibits, and Maryland Academy of Preceptor

programming.

His customer service skills, humility, ability to stay calm under pressure, and “can do” attitude will serve him well in his new role.

Thank you for making him feel welcome as he approaches you for potential site visits.

brewers@rx.umaryland.edu

410-706-4370



Nathaniel Thomas has joined the ELP team as an academic coordinator. Nate previously worked at Maryland Institute College of Art.

Nate handles rotation schedule changes, special student rotation application processes, coordinates our healthy aging course, and provides additional support to all tasks related

to E-value.

He has experience with customer service, academic advisement, communications, and planning. His problem solving skills, ability to multitask, take on new challenges, and work well under pressure will serve him well in this new role.

Thank you for making him feel welcome and directing all scheduling requests and rotation availability questions to him.

nthomas@rx.umaryland.edu

410-706-1495

Policy News

Meet our Course Mangers!

As you teach a student on rotation, you may encounter a challenge that could require the intervention of the course manager. Here is a listing of our course managers and a link to the updated course syllabi that you may find helpful in your dealings with our students: www.pharmacy.umaryland.edu/preceptors/courses.html.

ELP Course Managers 2013			
Required Courses	Course Title	Course Manager	@rx.umaryland.edu
IPPE 101/103	Community and Institutional Professional Practice	Toyin Tofade	ttofade
IPPE 203	Longitudinal Healthy Aging	Nicole Brandt Katy Pincus	nbrandt kpincus
IPPE 305/307	Quality and Safety in Community and Health System Practice	Toyin Tofade	ttofade
APPE 401	Health System Pharmacy Practice	Bethany Di Paula	bdipaula
APPE 451	Acute Care General Medicine	Jeff Gonzales	jgonzale
APPE 453	Community Pharmacy Practice	Cherokee Layson-Wolf	cwolf
APPE 455	Longitudinal Ambulatory Care	Deb Sturpe	dsturpe
APPE 499	Pharmacy Practice Pinnacle	Cherokee Layson-Wolf	cwolf

Advanced Pharmacy Patient Care Electives			
APPC	Course Title	Course Manager	@rx.umaryland.edu
418	Transitions/Continuity of Care	Toyin Tofade	ttofade
419	Medication Therapy Management	Cherokee Layson-Wolf	cwolf
456	Ambulatory Clinic	Deb Sturpe	dsturpe

458	Bone & Marrow Transplantation	James Trovato	jtrovato
460	Cardiology	David Roffman	droffman
462	Chemical Dependence	Jason Noel	jnoel
464	Clinical Pharmacokinetics	Tom Dowling	tdowling
466	Critical Care/Emergency Medicine	Jeff Gonzales	jgonzale
470	Geriatric Pharmacotherapy	Nicole Brandt	nbrandt
472	Hematologic Malignancies	James Trovato	jtrovato
474	HIV/AIDS	Neha Pandit	nsheth
476	Infectious Diseases	Neha Pandit	nsheth
478	Medical Oncology	James Trovato	jtrovato
480	Palliative Care	Mary Lynn McPherson	mmcphers
482	Pediatrics	Jill Morgan	jmorgan
484	Poison Information	Wendy Klein-Schwartz	wkleinsc
486	Psychiatry	Jason Noel	jnoel
488	Transplant	James Trovato	jtrovato

Administrative or General Practice Electives

APEX	Course Title	Course Manager	@rx.umaryland.edu
402	Compounding	James E. Polli	jpolli
403	Practice Based Research	Toyin Tofade	ttofade
404	Contemporary Pharmacy Practice		
406	Clinical Pharmacology/Drug Development		
408	Drug Information		
410	Food and Drug Administration		
411	Informatics		
412	Investigational Drugs		
414	Legislative Experience		
416	Managed Care Pharmacy		
417	Medication Safety		
418	Leadership and Management		
421	Radio/Nuclear Pharmacy		
420	Public Health		
426	Teaching Experience		

Research Experience APEX 424

Department	Course Manager	@rx.umaryland.edu
PHSR	Fadia Shaya	fshaya
PSC	Paul Shapiro	pshapiro
PPS	Tom Dowling	tdowling