



EMERGIN

# The Five Steps of Clinical Alarm Management

Presented by Michael A. McNeal  
July 22, 2005

# Why Alarm Management?



EMERGIN



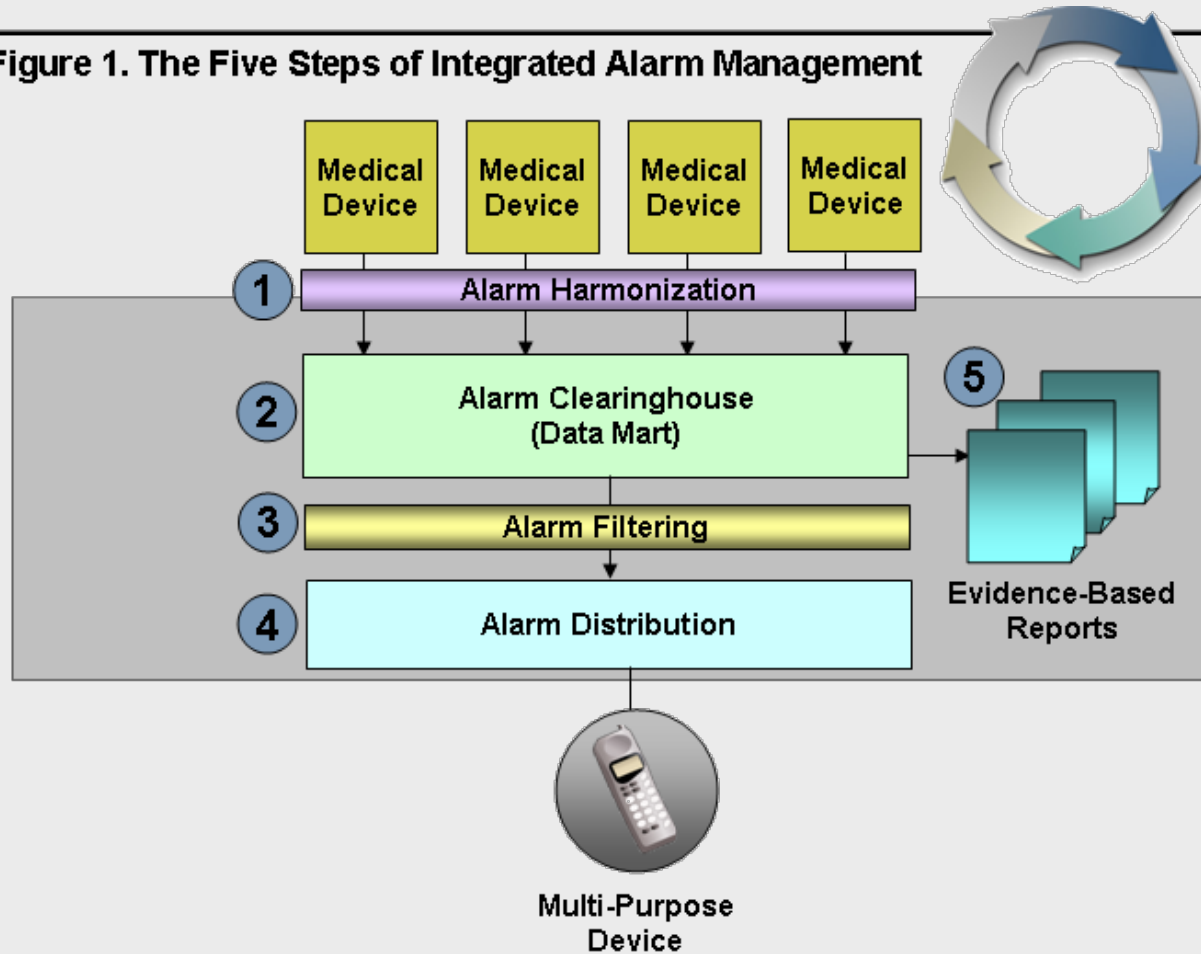
- **Medical devices speak different languages resulting in complex care models**
- **Nurse 'tool belt' is not effective for patient care and safety**
- **Nurses enter staff assignments in 2 or more applications resulting in errors and omissions**
- **Nurses want flexible notification choices**
- **Evidence-based documentation is missing**

# Alarm Management



EMERGIN

Figure 1. The Five Steps of Integrated Alarm Management



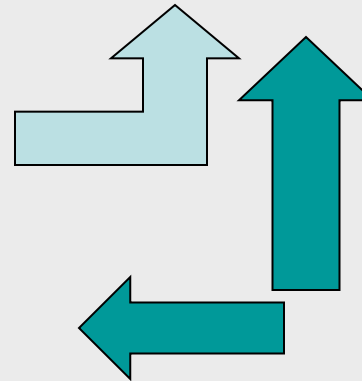
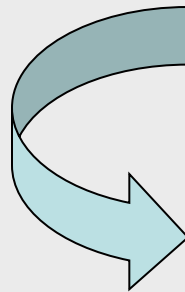
# Alarm Management: Step 1



EMERGIN

1. Alarm Harmonization
2. Alarm Clearinghouse
3. Alarm Filtering
4. Alarm Distribution
5. Evidence-Based Reports

Alarm Harmonization creates a standard language for each of the different medical devices so that alarms can be categorized and stored in a common format.



# Alarm Management: Step 2



EMERGIN

1. Alarm Harmonization
2. Alarm Clearinghouse
3. Alarm Filtering
4. Alarm Distribution
5. Evidence-Based Reports

Alarm Clearinghouse is a data store for the aggregation of alarms across multiple medical devices. This data can be used for clinical-decision support to prevent errors from occurring in the future.



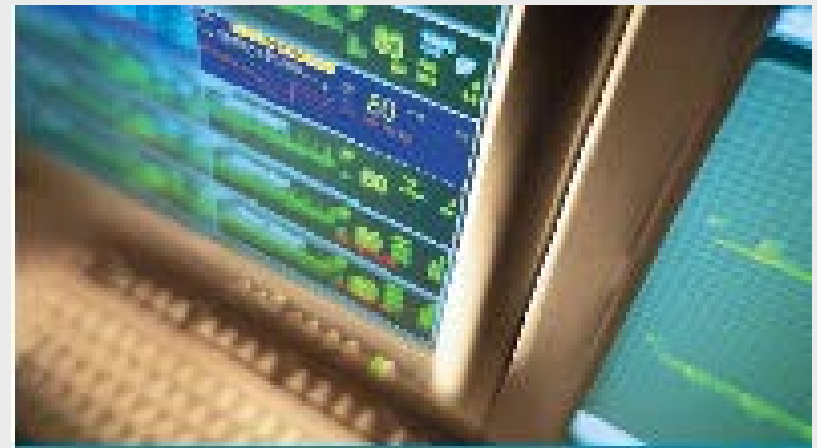
# Alarm Management: Step 3



EMERGIN

1. Alarm Harmonization
2. Alarm Clearinghouse
- 3. Alarm Filtering**
4. Alarm Distribution
5. Evidence-Based Reports

Alarm Filtering eliminates nuisance alarms so that nurses do not become desensitized by too many alerts.



# Alarm Levels



EMERGIN

- Red** = High Priority
- Yellow** = Medium Priority
- Inops** = Battery Low, Leads Off
- Unsilenced** = Not silenced at PIIC or Bedside

# Alarm Management: Step 4



EMERGIN

1. Alarm Harmonization
2. Alarm Clearinghouse
3. Alarm Filtering
4. Alarm Distribution
5. Evidence-Based Reports

Alarm Distribution enables nurse leaders to select their device of choice:

- Dome Light
- Badge
- Phone
- Alpha Pager
- LED Sign
- Monitor





# Staff Assignment



EMERGIN

View Setup

View: Device

- ICU
  - 1111 (paul)
    - Alerts
      - Red Alarms
      - Yellow Alarms
      - Inops
    - Unsilenced Alerts
    - Page For Unassigned Beds
    - Page for All Red Alarms in Un
    - Page Unsilenced Red Alarms
  - 2222
  - SICU

Bed Label	Equipment Label	Patient Name	Unit
Bed3	Bed3	No Patient Admitted	UN1T_1
Bed4	Bed4	No Patient Admitted	UN1T_1
Bed5	Bed5	No Patient Admitted	UN1T_1
Bed17	Ts17	No Patient Admitted	UN1T_2
Bed18	Ts18	No Patient Admitted	UN1T_2
Bed19	Ts19	No Patient Admitted	UN1T_2

Notice the other configurations are also displayed.

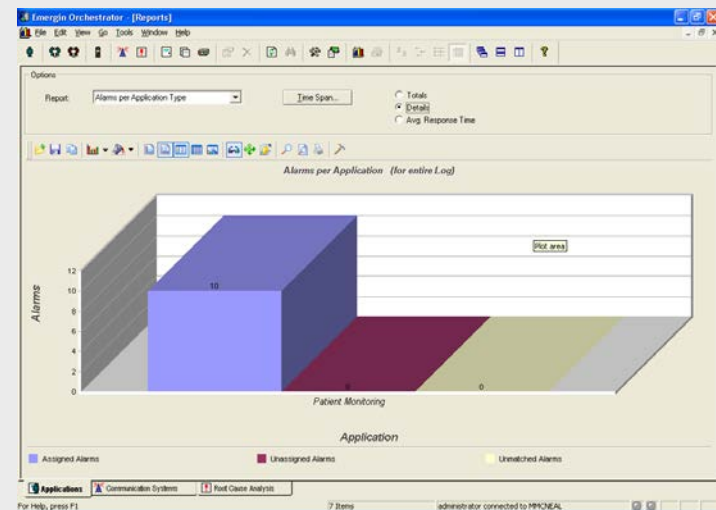
# Alarm Management: Step 5



EMERGIN

1. Alarm Harmonization
2. Alarm Filtering
3. Alarm Clearinghouse
4. Alarm Distribution
5. Evidence-Based Reports

Evidence-Based Reports enables nurse leaders to record activity and playback events to detect gaps in communications versus using anecdotal, random samplings.



# Alarm Management Benefits



EMERGIN

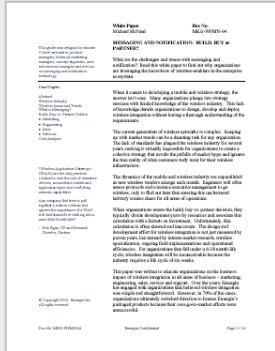


- Improves patient care, satisfaction and safety
- Helps nurses in a stressful, chaotic work environment
- Reduces alarm overload, nurse fatigue and communication errors
- Improves nurse productivity by reducing walk time and repetitive job functions
- Provides evidence-based documentation and root cause analysis for investigations

# For More Information



EMERGIN



White Papers



Brochures



Data Sheets



Case Studies

GENERAL INFORMATION

[www.emergin.com](http://www.emergin.com)

CONTACT

Name: Michael McNeal

Direct: +1(561) 886-3100

E-mail:

[michael.mcneal@emergin.com](mailto:michael.mcneal@emergin.com)