

# Atlantic Coast Child Welfare Implementation Center

---

*Partners for Change*

A member of the National Child Welfare Training and Technical Assistance Center, a service of the Children's Bureau, U.S. Department of Health and Human Services

## Workshop 30: Applying Logic Models in Plans for Systemic Change and Evaluation

Presenters: Diane DePanfilis & Carolyn White

Friday  
May 29, 2009  
9:00AM

National Child Welfare Evaluation Summit  
May 27-29, 2009 – Washington, DC

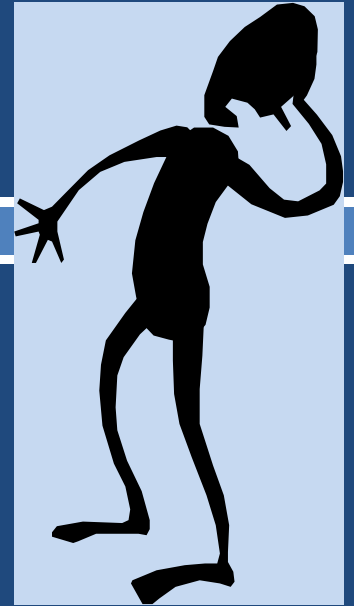
# Presenters

- Diane DePanfilis, PhD, MSW – Professor, Associate Dean for Research, Director-Ruth H. Young Center for Families & Children, Principal Investigator-ACCWIC, University of Maryland School of Social Work
- Carolyn White, MSW, LCSW – Executive Director for the Poarch Band of Creek Indians, ACCWIC Advisory Board Member

# Purpose of Session

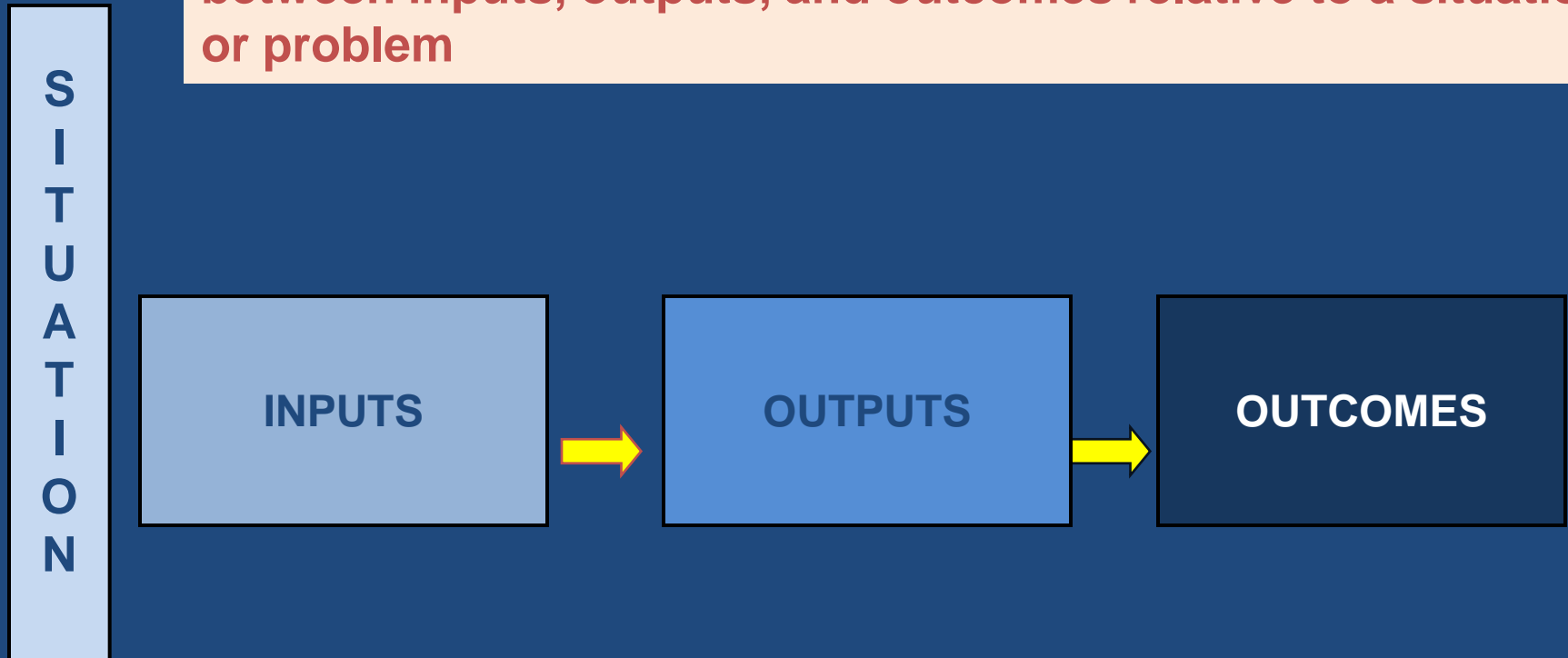
- To provide a framework for developing logic models to guide and evaluate systems change
- To define logic model components
- To illustrate sample systems change oriented logic models from tribal and state child welfare systems

*What is a  
Logic Model?*

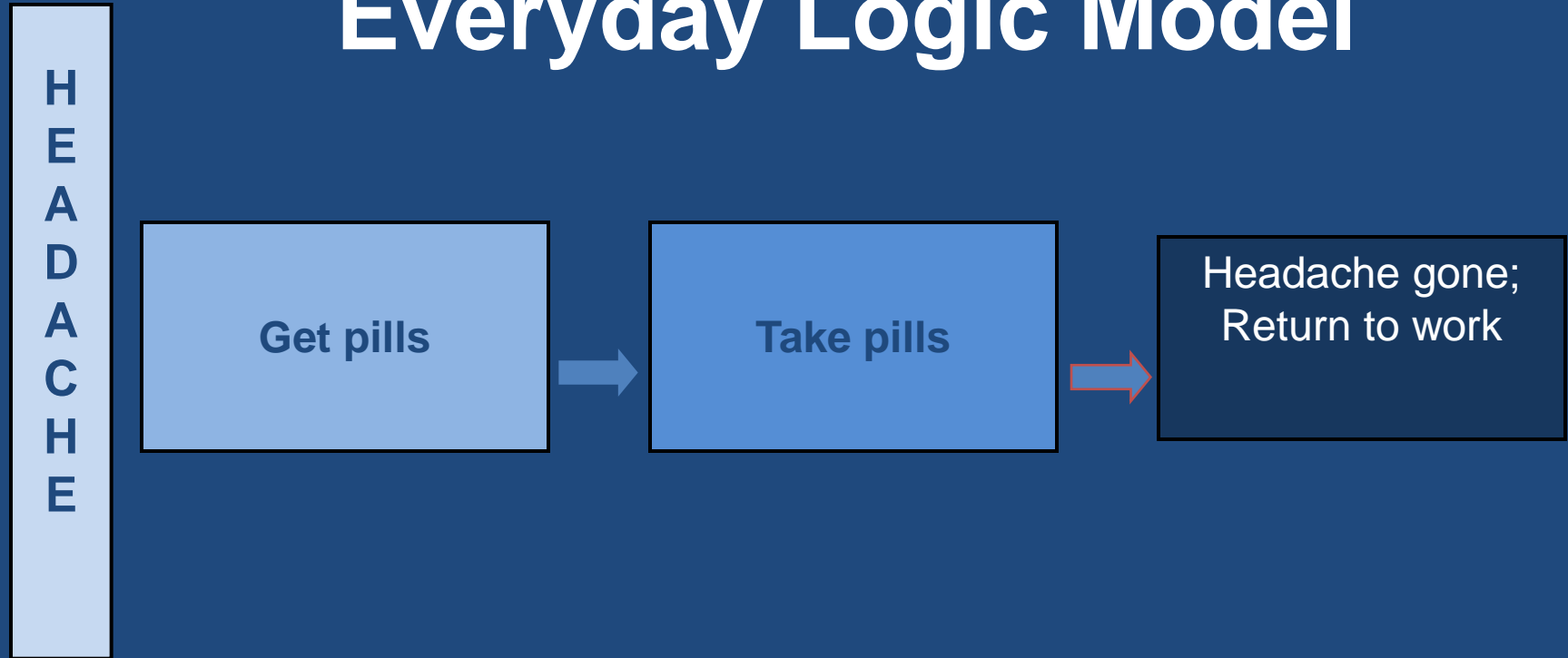


# Logic Model

A graphic representation that shows logical relationships between inputs, outputs, and outcomes relative to a situation or problem



# Everyday Logic Model



*Taylor-Powell, n.d.*

# Logic Model Frameworks

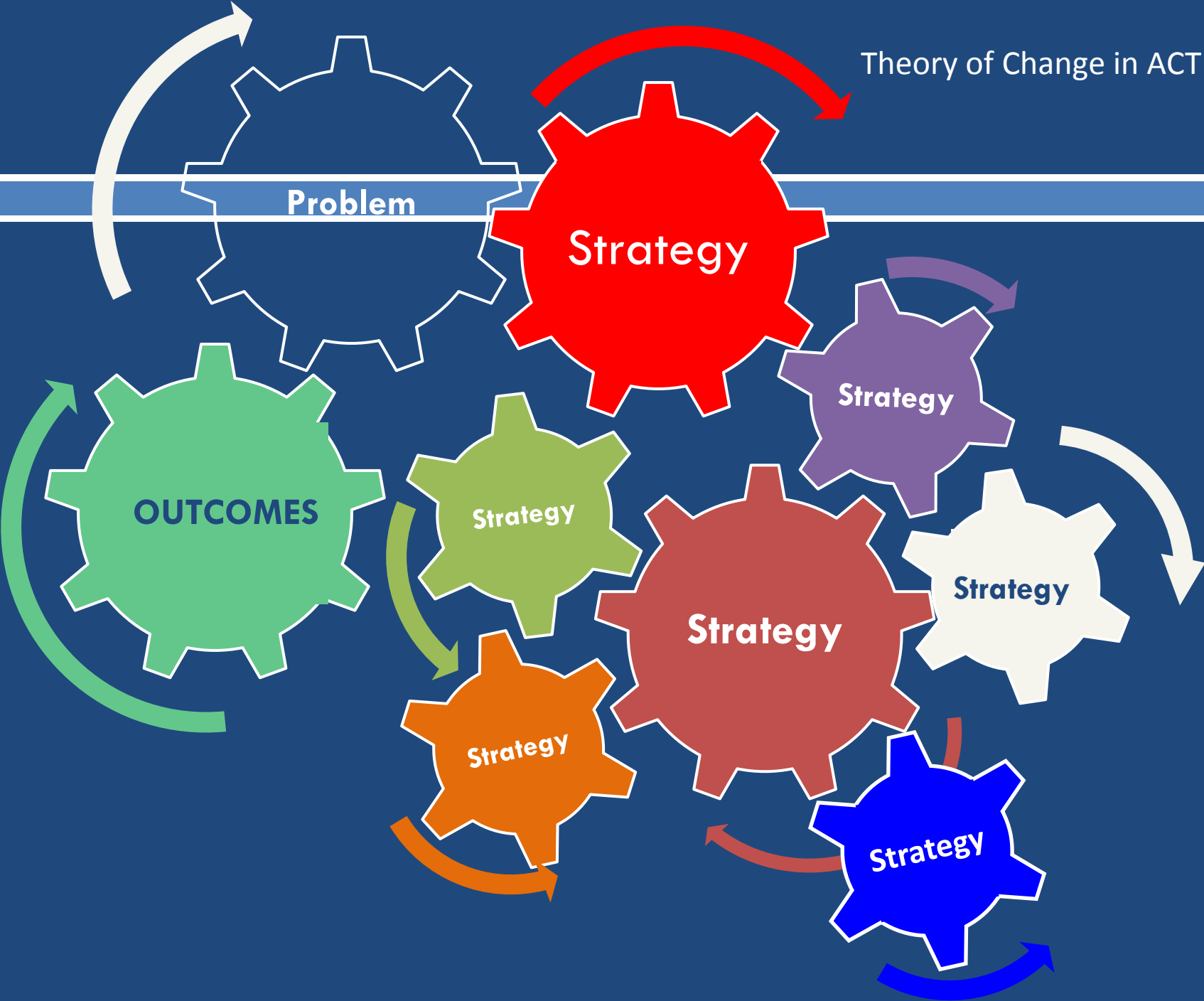
- Differ by purpose
  - ▣ Program design & planning
  - ▣ Program implementation
  - ▣ Program evaluation & strategic reporting
  - ▣ Outcomes measurement & strategic reporting
- Can be simple or complex depending on your purpose
- Link to your overall theory of change

# What is a Theory of change?

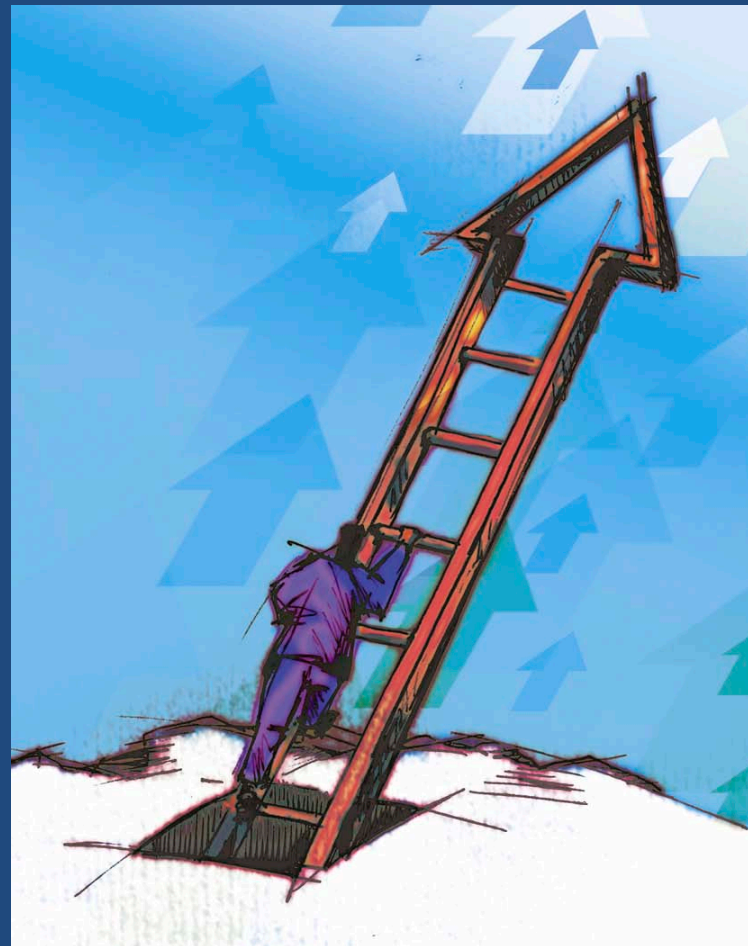
- Underlying assumptions about why your proposed strategies will respond to your statement of the problem and achieve your intended outcomes







# Step 1: Define the problem



# Problem Statement

- Defines the problem
  - ▣ Why is it a problem?
  - ▣ How big of a problem is it?
  - ▣ Relevance to CFSR systematic factors and/or outcomes
  - ▣ Clarifies your assumptions about what strategies will address the problem (theory of change)

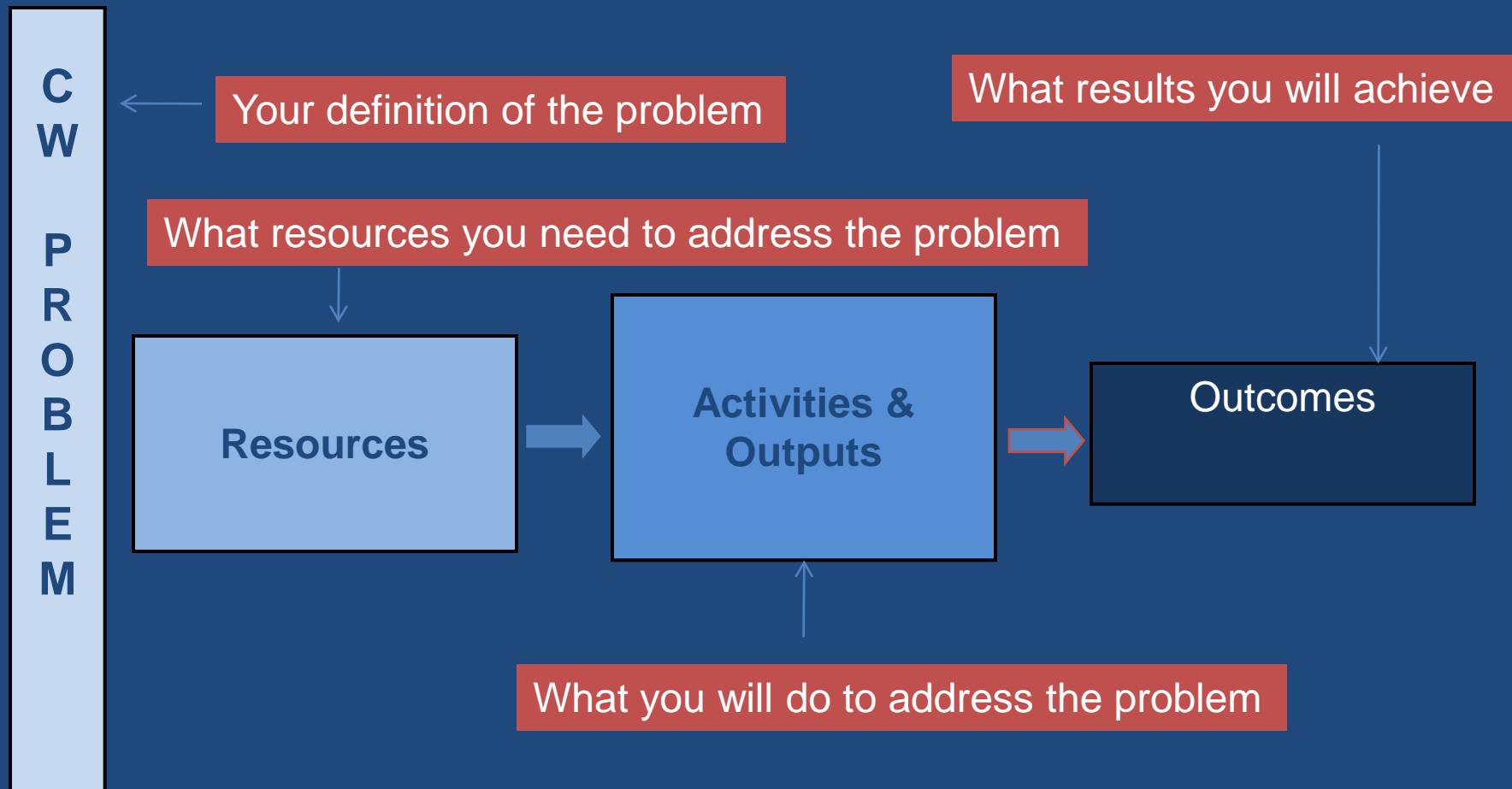
# Examples of problems

- Children experience repeat maltreatment
- Children are placed in out-of-home care for long periods of time
- Children experience frequent moves in placement setting
- Children are not prepared to be self-sufficient when they transition from care to live on their own
- OTHER??????

# Step 2: Develop your plan

- Identify your strategies (that if achieved will address the problem)
- Develop a detailed implementation plan that connects the dots and defines a timeframe for accomplishing activities, outputs, and outcomes
- Identify the resources you will need to be successful

# Simple CW Logic Model



# Problem Statement

## System Change Goals

### Resources

Needed to implement systems change

### Activities

Strategies to address problem

### Outputs

Products of activities

### Organizational

#### Outcomes

Results for the agency

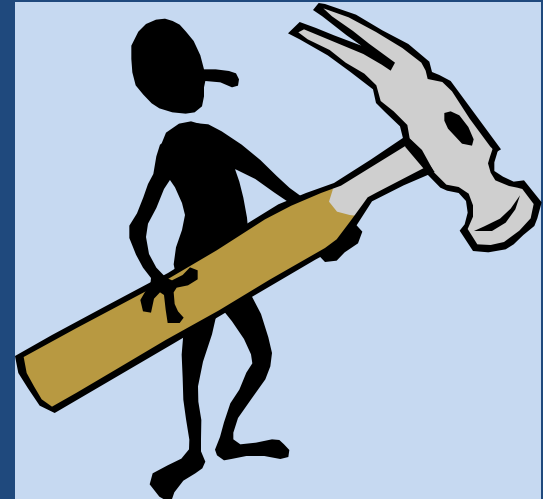
### Child & Family

#### Outcomes

Results for children, youth, & families

# Resources

- Develop a resource plan that identifies the supports you need to successfully implement your systems change strategies





# Resource Examples

- Organizational and/or community assessments
- Project planning facilitation
- Dedicated time from a project manager
- Workforce development
- Policy analysis/revision
- Model development/testing
- Systems design

# Examples of Activities

- Assessing readiness for change
- Developing a detailed work plan
- Convening key stakeholders
- Implementing the plan
- Developing methods of measuring activities over time
- Tracking the achievement of goals and implementation of activities

# Examples of Outputs

- Family Centered Practice Model
- Supervisory assessment instrument
- Policies & procedures
- Curriculum development
- Interagency strategic plan

# Examples of Organizational Outcomes

Improvements in CFSR systemic factors:

- ❑ Statewide information system
- ❑ Case review system
- ❑ Quality assurance system
- ❑ Staff and provider training
- ❑ Service array and resource development
- ❑ Agency responsiveness to the community
- ❑ Foster/adoptive home licensing, approval and recruitment

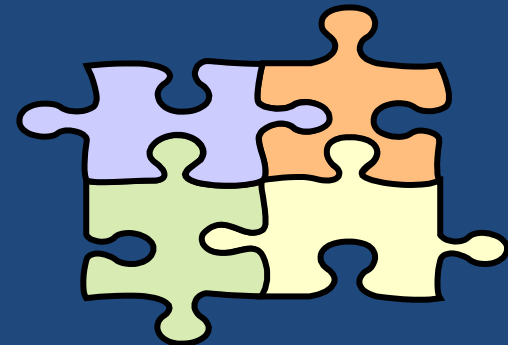
# Examples of Child/Family Outcomes

Improvements in CFSR outcome areas:

- S1: Children are protected from abuse/neglect
- S2: Children are safely maintained in their homes
- P1: Children have permanency/stability in living situations
- P2: Continuity of family relationships is preserved
- WB1: Families have enhanced capacity to provide for their children's needs
- WB2 and WB3: Children receive appropriate educational, health, and mental health services to meet their needs

# Step 3: Evaluation Plan

- Identify how you will know you are successful
  - ▣ Methods for tracking what you do, the quality of what you do, and the results (outcomes) you achieve over time



# Sample logic models

- Group exercise – use the samples provided and answer questions on the next page



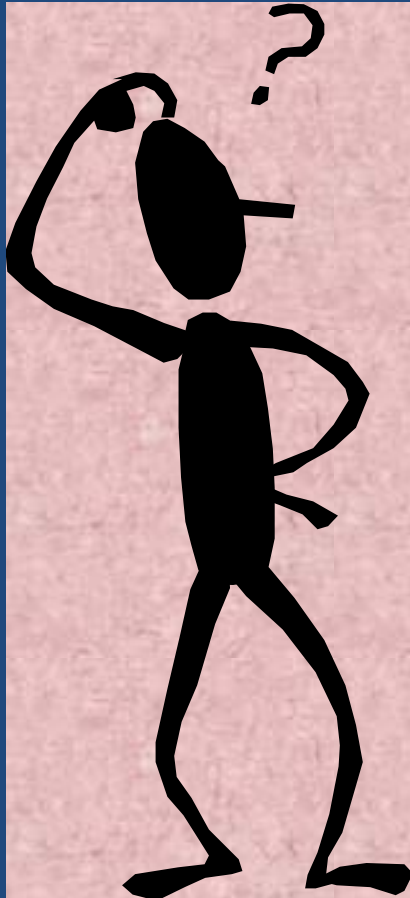
# Questions

- ❑ Is the problem statement clear?
- ❑ Are goals specific and related to CFSR?
- ❑ Is it feasible that the proposed activities will achieve goals?
- ❑ Is the resource plan sufficient to support the proposed activities?
- ❑ Are the outputs clearly linked to the activities?
- ❑ Is it likely these outcomes will be achieved in a 2 year period?



# Methods for Tracking Change

- Developing indicators that can be easily measured
- Establishing simple systems for tracking indicators
- Measuring change must be at multiple points over time
- Keeping it simple and manageable is important



# Questions?

# Thank you!

Presenters:  
Diane DePanfilis &  
Carolyn White

**Workshop:**  
Applying Logic Models to Systems Change

# For Questions Later, Contact:

- Diane DePanfilis,  
-410.706.3509 or [ddepanfilis@ssw.umaryland.edu](mailto:ddepanfilis@ssw.umaryland.edu)

- Carolyn White,  
-251-368-9135, ext 2602 or [cwhite@pci-nsmn.gov](mailto:cwhite@pci-nsmn.gov)

Presenters:  
Diane DePanfilis &  
Carolyn White

**Workshop:**  
**Applying logic models to systems change**