

Elder Abuse in Family Settings: Findings from Western Nepal

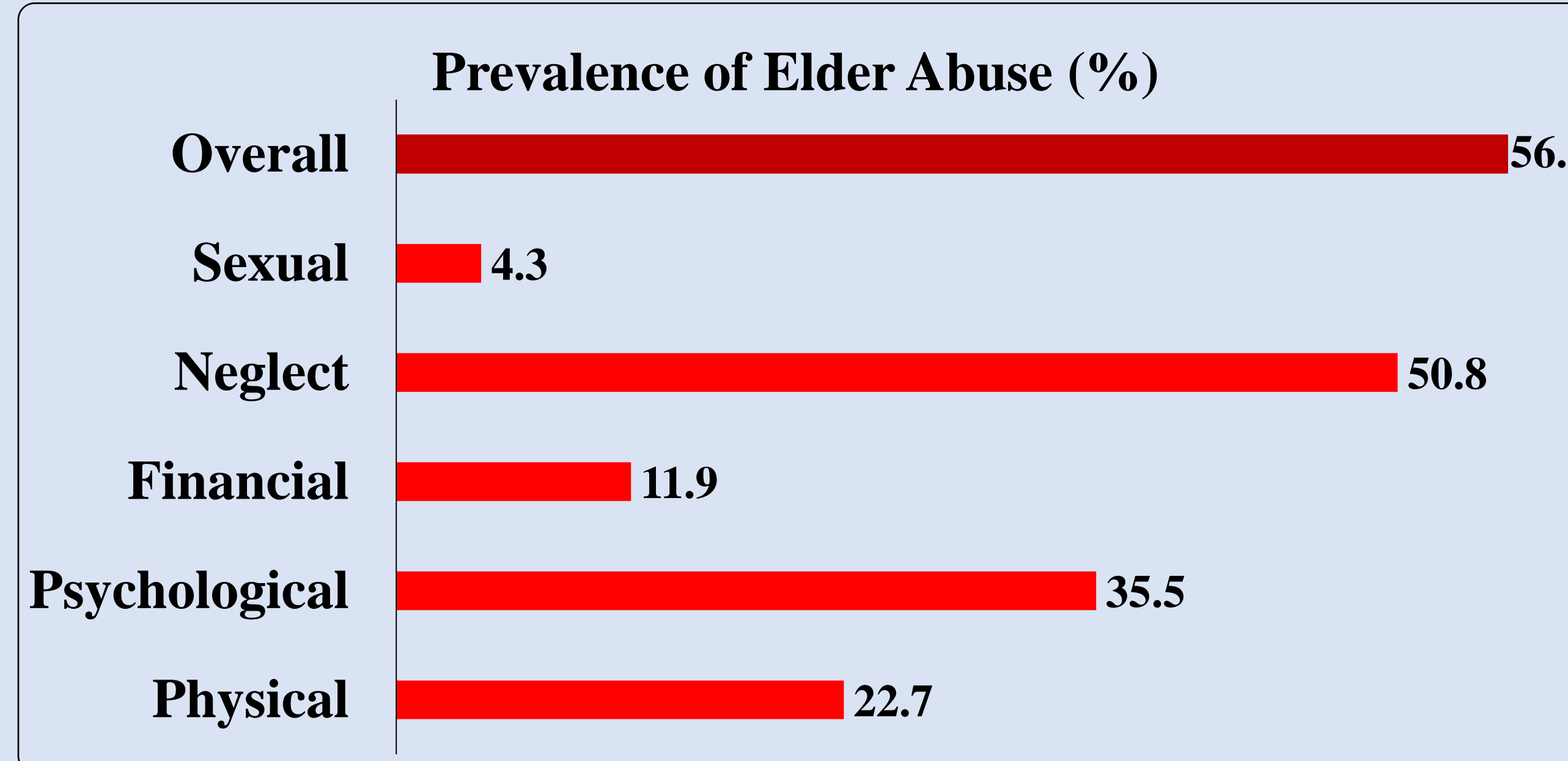
Aman Shrestha¹, Bharat Kafle², Preeti Bhattarai², Pratik Bhattarai³, Saruna Ghimire⁴

BACKGROUND

- In Nepal, issues of older adults are considered societal taboos and are often obliterated.
- Traditional values promoting filial piety hinder the acknowledgment and reporting of elder abuse, particularly within family settings in Nepal.
- First comprehensive study spanning all three ecological regions of Gandaki Province, Nepal.
- Aims: (1) estimate the prevalence of elder abuse by family members; (2) identify factors associated with such abuse

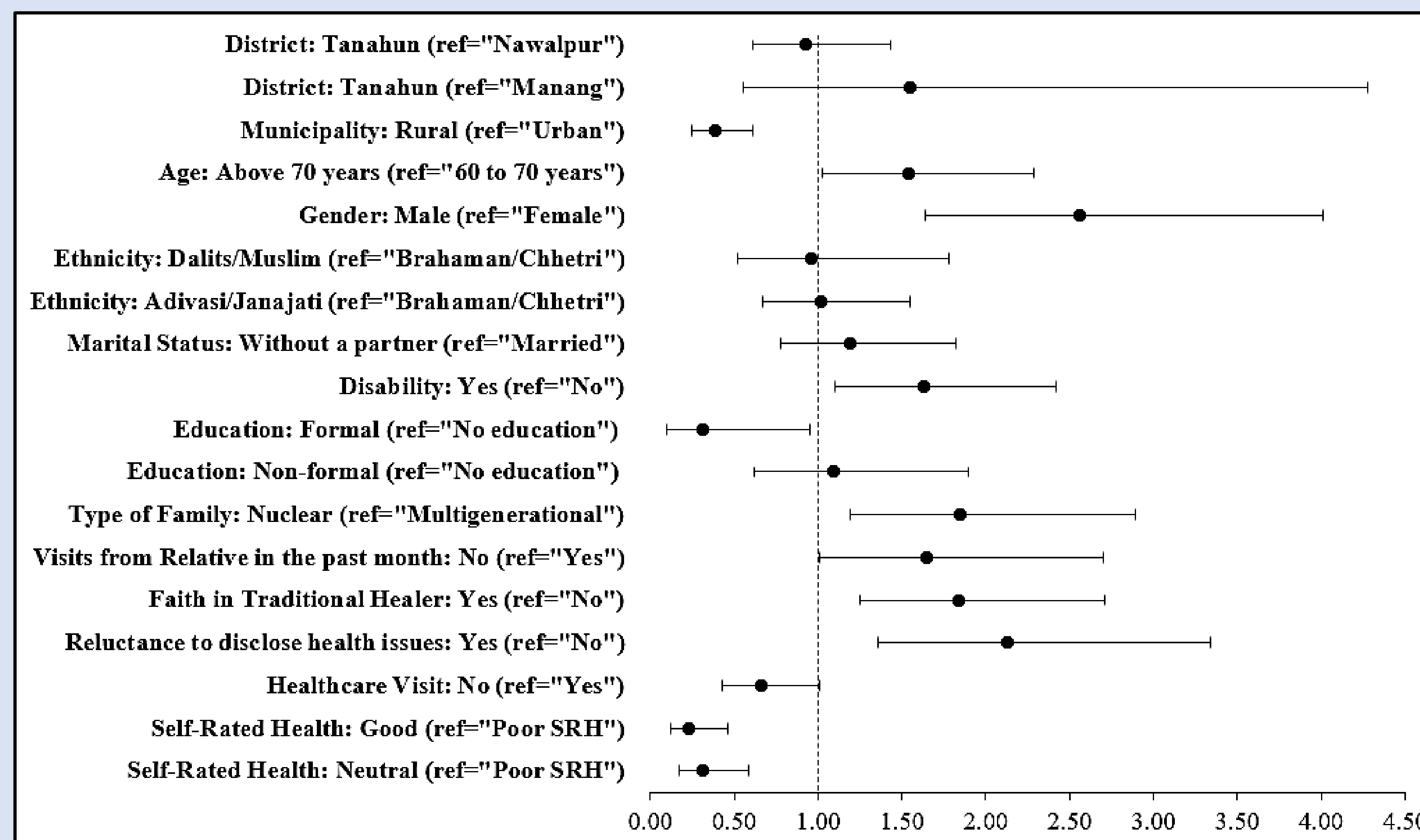
METHODS

- N = 612 (final analytic sample)
- Primary data collected between November 2019 and May 2020 in Nawalpur (Tarai), Tanahun (Hills), and Manang (Mountains) in Gandaki province of western Nepal.
- Included older adults ≥ 60 years; permanent residents in the study area and able to communicate in Nepali language.
- Association between elder abuse and the predictors tested using Pearson Chi-square, Mann-Whitney, and multivariable logistic regression.



USC Judith D. Tamkin
Symposium on Elder Abuse

Over half of the older adults reported experiencing abuse from their family members.



RESULTS

- Prevalence of overall abuse and all its subtypes, except for financial abuse, were statistically significant and higher among males than females.
- Gender and reluctance to disclose health issues to family members were the strongest predictors of elder abuse in western Nepal.

DISCUSSION

- If these results were to be applied generally and I weren't asked to humbly rule out the possibility of a myriad of different confounds and limits, then it would imply that the high prevalence of older abuse indicates detrimental effects on health and well-being of older adults, and thereby require a solid plan of actions and policy considerations to address the issue.

FINANCIAL DISCLOSURE

- None

AFFILIATIONS

1. PhD Program in Gerontology, University of Maryland Baltimore & University of Maryland Baltimore County, Maryland, USA
2. Karnali Academy of Health Sciences, Nepal
3. Oxford University Clinical Research Unit, Nepal
4. Miami University, Ohio, USA

