

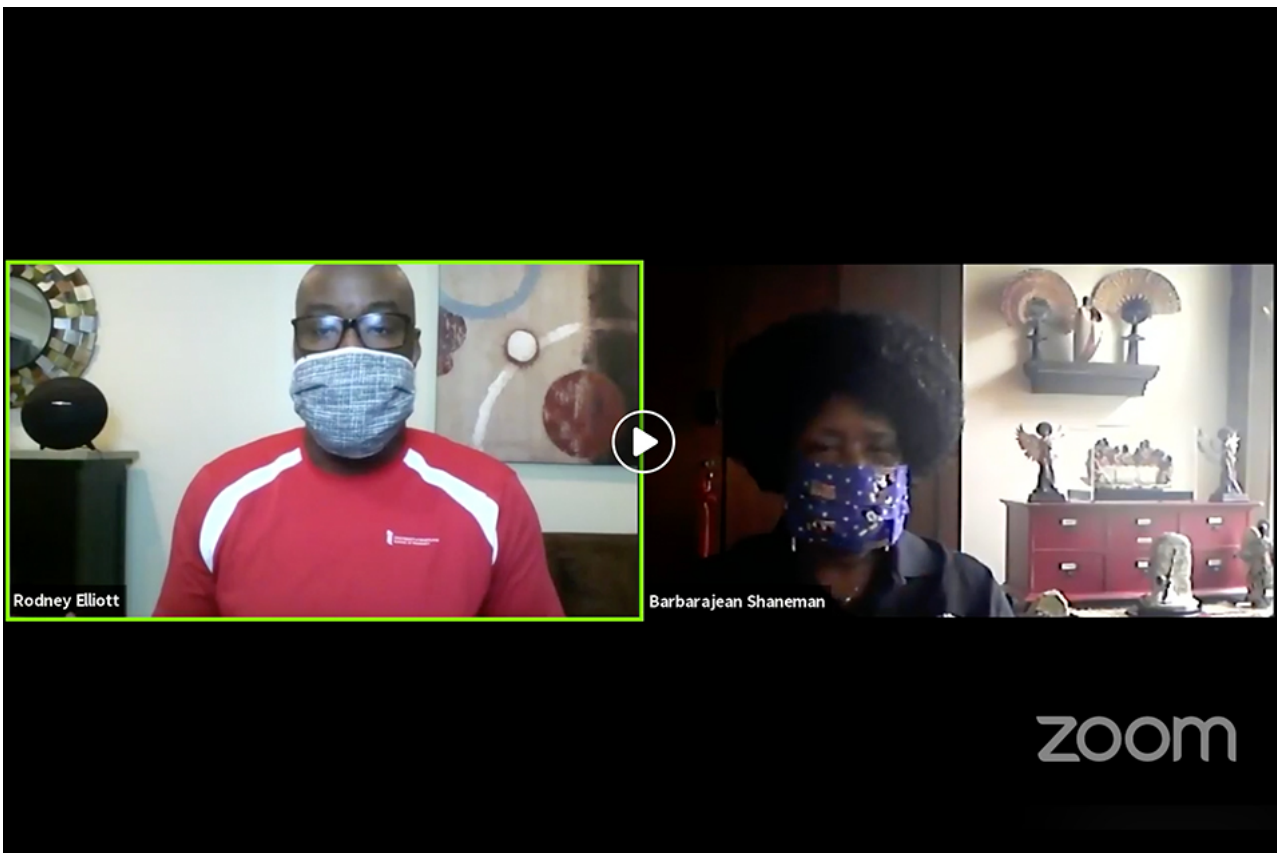


UNIVERSITY of MARYLAND
SCHOOL OF PHARMACY

Type here to search...

- [HOME](#)
- [SCHOOL OF PHARMACY](#)
- [CONNECT WITH US](#)
- [CONTACT US](#)

HELPING HANDS: THE PATIENTS PROGRAM HOSTS “MS. BJ’S CORNER”



- June 18, 2020
- [Baltimore, Community](#)
- [Coronavirus, COVID-19, Genevieve Polk, Helping Hands, PATIENTS, PHSR](#)
- -
 -
 -

Written By: Genevieve Polk, MPH, Assistant Director of Dissemination and Implementation for The PATIENTS Program

Editor's Note: *This post is part of a series of [Helping Hands](#) stories authored by School of Pharmacy faculty, staff, students, trainees, and alumni who stepped up to assist their family and friends, colleagues, and communities during the COVID-19 pandemic.*

[The PATIENTS Program](#) is a national leader in patient-centered outcomes research and serves as a bridge between the communities that encompass West Baltimore and researchers at the University of Maryland, Baltimore. With COVID-19 preventing us from meeting with our community in person, we have gone online to stay connected to them virtually. On Thursday, May 21, we launched “Ms. BJ’s Corner” on Facebook, a program dedicated to sharing knowledge about health and research. The first program reached 414 individuals and received 280 views.

Ms. BJ is a senior program specialist with The PATIENTS Program and a nurse. During this Facebook Live event, she shared her many years of knowledge as a nurse and researcher. She explained the fear that many communities have regarding research due to past, negative experiences. For example, participants in research should be referred to as “clients,” not “patients,” as “patients” implies a state of illness. Ms. BJ clarified that clients in studies are compensated for their time and travel. She also shared how important clinical research is for increasing awareness about treatments for illnesses such as hypertension, diabetes, and obesity, and for vaccines such as the flu vaccine and the measles, mumps, and rubella (MMR) vaccine.

The PATIENTS Program continues its efforts to bridge the gap between research and the community we serve during the COVID-19 pandemic. [Watch “Ms. BJ’s Corner” here](#) and be sure to [follow The PATIENTS Program on Facebook](#) for more information about other upcoming events.

[Helping Hands: PharmD Class of 2000 Hosts Virtual 20-Year Reunion](#)

Leave a Reply

Your email address will not be published. Required fields are marked *

Comment

You may use these HTML tags and attributes: <abbr title=""> <acronym title=""> <blockquote cite=""> <cite> <code> <del datetime=""> <i> <q cite=""> <s> <strike>

Name *

Email *

Website

[Post Comment](#)

Top Posts



- [Regulatory Science Competition Winners Take Presentations Online](#)



- [Lamy Center Caregiver Connection: The Most Difficult Decision and How to Tell the Dementia Patient](#)



- [School of Pharmacy Recognized for Leadership at Virtual Symposium](#)

Categories

- [Academics](#)
- [Admissions](#)
- [Baltimore](#)
- [Community](#)
- [Events](#)
- [Faculty](#)
- [Featured Post](#)
- [Practice](#)
- [Research](#)
- [Shady Grove](#)
- [Student Life](#)

Tags

Comment Policy

Thank you for visiting Inside SOP, the University of Maryland School of Pharmacy's blog. We welcome your comments. Please note that this is a moderated blog. All comments will be reviewed before they are posted, which will result in a delay in the posting of comments. Please leave comments that are respectful and useful. Malicious, anonymous, and promotional comments will not be posted. We reserve the right to remove comments from the site at any time.

Inside SOP is not monitored by pharmacists or other health care professionals. Comments that contain private health information or request medical advice will be deleted.

For more information, please review the [School of Pharmacy's Social Media Code of Ethics](#). If you have any questions or concerns about this policy, please [contact us](#).



UNIVERSITY of MARYLAND
SCHOOL OF PHARMACY

- [Contact Us](#)
- [Directions and Maps](#)
- [Web Site A-Z](#)
- [Press](#)
- [Campus Alerts](#)
- [Employment](#)
- [Feedback](#)
- [Hotline](#)